



TempTale® GEO XEP

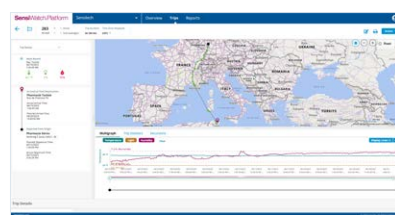
Visibility to -95°C for Extended Shipments

The TempTale® GEO XEP enables global, real-time shipment location tracking with validated, GxP-compliant temperature monitoring for longer trips. Tailored for temperature-sensitive life sciences products, the TempTale GEO XEP solution proactively notifies logistics and partners, providing in-transit visibility and alerts, speeding product release by automating data sent to the cloud.

The TempTale GEO XEP shipments monitor dry ice and ambient shipments down to -95°C generating an alert if the temperature goes beyond the product's limits. Built-in battery management simplifies device management. The solution provides crucial insights into what occurred during shipment to support root cause analysis.

Key Features and Benefits

- Small IoT device fits most packaging
- Arrives fully charged and ready to use—no worries about device battery life
- Immediate, real-time temperature, light, humidity, and location notifications, with option to add control tower escalation services
- Optimized for extended trips up to 120 days
- Communicates as frequently as every 15 minutes and immediately upon alarm
- Global cellular communication coverage, with added Wi-Fi locates for precise proof of delivery
- Remotely configure your own alarms and trip length from Sensitech's software
- Lithium metal battery (no IATA dangerous goods declaration if <3 devices in consignment)
- Mark hardware time stamp indicating re-icing
- Up to 6 hardware alarms and up to 12 software alarms to speed product release
- Dual temperature monitoring, internal (probe) and external (ambient)

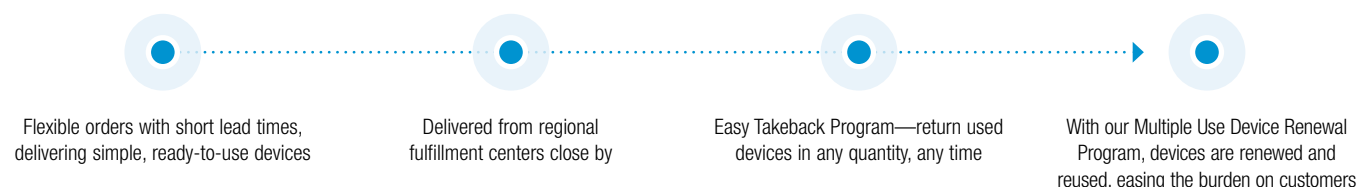


- Each device is individually 3-point NIST calibrated before every use, with a Certificate of Calibration
- Failsafe, secondary download with Bluetooth and the TempTale App

SensiWatch® Platform provides end-to-end visibility and alerts while in-transit. Take advantage of real-time data and notifications:

- Delays and missed flights
- Port congestion, extended dwell times
- Proximity of arrival
- Trailer door opened
- Early warning temperature trending beyond limits

A convenient route to reducing CO₂ emissions and supply chain waste



TempTale® GEO XEP Specifications	
Recording Option	Single Use (for Shippers), Sensitech Manages Multiple Use Device Renewal Program
Certified Modes of Transport	Air, Ocean, Road, Rail (Airline approvals upon request)
Sensor Types	Temperature, Humidity, Light
Probe Temperature Measurement Range	-95°C to +55°C (Probe placed inside payload next to product)
Probe Temperature Accuracy Range	±0.5°C from -10°C to +45°C ±1.5°C from -95°C to -10°C; ±1.5°C from +45°C to +55°C
Core Device Operating Range	-30°C to +55°C (Core device stays outside of dry ice environment)
Core Device Temperature Accuracy Range	± 0.5°C from -10°C to +45°C ± 1.0°C from -30°C to -10°C; +45°C to +55°C
Humidity Measurement Range	10% to 90% RH, non-condensing
Humidity Accuracy Range	Typical ±3.0% / Max ±5.0% RH from 10% to 90% RH
Alarms	<ul style="list-style-type: none"> Up to 6 hardware (Single Temp Limit, Temp Range, Dual Temp Range, MKT, Duration) and up to 12 software alarms; alarm is triggered when temperature exceeds set limits Single-Event (Continuous) or Cumulative Dual Sensing (high/low alarms): Probe + Ambient or Probe + Humidity
Remote Device Configuration	Simplify order/inventory management by configuring your own hardware alarms and trip length using ColdStream Select or SensiWatch Platform
Temperature Accuracy Certification	Individual 3-point NIST® Traceable Calibration per monitor before each use, Certificate of Calibration with order, by Request or Calibration Portal
Temperature Sensor Sample Interval	Programmable from 5 minutes to 2 hours
Temperature Measurement Responsiveness	Meets the requirements of USP <1079.3> and EN12830
Start Up Delay	0 minutes to 24 hours
Light Sensor Range	0-100%
Communication	LTE CAT-M1 (for 4G/5G networks) with 2G fallback
Memory	16,000 data points per sensor
Battery Type	Lithium metal (non-replaceable, <2 grams lithium) (no IATA dangerous goods label or declaration if <3 devices in a consignment)
Shelf Life & Sustainability	<ul style="list-style-type: none"> 6-month shelf life (press start by use by date, shipper operations simple) Sensitech manages renewal of returned devices for reuse. No lost device fees.
Operating Life	Up to 120 days, with communication reporting interval from 15 minutes to 360 minutes; Configurable based on total days for shipment. (For shorter shipments see TempTale® GEO XP for up to 60 days)
Location	Cellular and Wi-Fi
Dimensions and Weight	91 mm x 61 mm x 31 mm; Probe length 1.5 meters; 153 grams
Environmental Rating	IP64
Regulatory	FCC, CE, IC, RTCA – D0160G, MIC/GITEKI, 3-Point NIST Traceable Calibration (each device individually calibrated)
Display Indicators	LCD screen icons: Running, Started, Stopped, Alarm Status, Start-up Delay, Marked Event, Uploading to Cloud, Upload to Cloud Complete, Final Cloud Upload requires APP, Bluetooth On
Secondary Download	TempTale® Mobile App (iOS 15+—iPhone 7 or higher, Android 12+—Samsung Galaxy S8+ or Note 8+, Bluetooth Low Energy)
Software Interfaces	SensiWatch® Platform; email notifications; ColdStream® Select 2.2+ (designed to meet FDA 21 CFR Part 11 and EC Annex 11); TempTale® App 3.1+; TempTale® Manager Desktop 9.1+
Cold Chain PDF Report	Secure PDF generated by cloud software
Minimum System Requirements	Windows 8.1+; Mac OSX 10.12+; Browsers: Google Chrome 83+, Microsoft Edge 83+, Safari 14+; Adobe® Reader 9.0+

Sensitech has performed all necessary testing and can provide documentation supporting our compliance at your request.

Sensitech Inc. is a global leader in delivering supply chain visibility solutions. Our innovative monitoring products and services help to maintain the quality and integrity of our customers' valuable products at every step in their journey, all around the world. For 30 years, leading companies in the food, pharmaceutical, industrial, consumer goods and other industries have relied on Sensitech to help protect their products—and their bottom lines. All trademarks and service marks are property of their respective owners. Visit www.sensitech.com for additional information. ©2025 Carrier. All Rights Reserved.

Sensitech Inc. • Global Headquarters • 800 Cummings Center • Suite 258X • Beverly, MA 01915-6197
1-800-843-8367 • +1-978-927-7033 • Fax: +1-978-921-2112 • sensitech.clientservices@carrier.com