



UNITED
TECHNOLOGIES
CARRIER
TRANSCOLD

Carrier Transicold Division
Carrier Corporation
P.O. Box 4805
Syracuse, New York 13221

THIS DOCUMENT IS THE PROPERTY OF CARRIER CORPORATION
AND IS DELIVERED UPON THE EXPRESS CONDITION THAT THE
CONTENTS WILL NOT BE DISCLOSED OR USED WITHOUT CARRIER
CORPORATION'S WRITTEN CONSENT.

SUBMISSION OF THESE DRAWINGS OR DOCUMENTS
DOES NOT CONSTITUTE PART PERFORMANCE OR
ACCEPTANCE OF CONTRACT

PART NO.	MODEL DESCRIPTION
98-03198-01	(DOM) NDA-93/4 2/3 COMPARTMENT
98-03198-02	(AUST) NDA-93/4 2/3 COMPARTMENT
98-03198-03	(EURO) NDA-93/4 2/3 COMPARTMENT
98-03198-04	(EURO) NDA-93/4 2/3 COMPARTMENT - REMOTE TANK

CROSS REFERENCE INDEX		
DESCRIPTION	INSTALLATION DRAWING NO.	KIT NO.
FUEL TANKS (22" DIAMETER)	98-02201	76-00295-XX
LIGHT BAR INSTALLATION INSTRUCTIONS	98-03140	76-00542-00
REMOTE EVAP. INSTALLATION INSTRUCTIONS	98-03174	76-00525-XX
LED LIGHT BAR INSTALLATION INSTRUCTIONS	98-03246	76-02000-01

CONTENTS	SHEET
GENERAL INFORMATION	1
UNIT DIMENSIONAL DATA	2
SWING RADIUS	2
TRAILER BODY PREPARATION	3
REMOTE/HI-CURRENT BOX INSTALLATION	4
UNIT LIFTING LOCATION	5
UNIT INSTALLATION	5
TANK INSTALLATION (OPTIONAL)	6,7
BATTERY INSTALLATION	7

NOTES:

1.0 COMPLETE INSTALLATION INCLUDES AND IS NOT LIMITED TO:

- 1.1 UNIT INSTALLATION
- 1.2 BATTERY INSTALLATION, INCLUDING DRAIN HOSE.
- 1.3 COMPLETION OF PRE-DELIVERY INSPECTION PER MODEL
 - 1.3.1 UNIT PREP AND INITIAL ADJUSTMENTS
 - 1.3.2 CHECKLIST
 - 1.3.3 UNIT RUN IN PER PDI CHECKLIST
 - 1.3.4 WARRANTY REGISTRATION CARD SUBMITTAL
 - 1.3.5 DATALINK DOWNLOAD VERIFICATION

2.0 THE TRAILER STRUCTURE MUST BE EVALUATED BY THE TRAILER MANUFACTURER TO DETERMINE ITS ABILITY TO WITHSTAND THE LOADS IMPOSED BY THE UNIT OVER ITS SERVICE LIFE. CARRIER TRANSCOLD DOES NOT CONVEY ANY ENDORSEMENT OR WARRANTY FOR THE TRAILER'S STRUCTURAL INTEGRITY.

WEIGHTS:

NDA REEFER UNIT (WET, LESS BATTERY): 1721 LBS [782 KGS]
BATTERY (AVERAGE): 50 LBS [23 KGS]

3.0 UNIT MOUNTING SURFACES OF THE TRAILER THAT CONTACT THE UNIT MOUNTING PADS MUST BE UNI-PLANAR TO WITHIN 0.13[3] TO PREVENT DISTORTION OF THE UNIT AND/OR TRAILER.

4.0 TRAILER SURFACES THAT CONTACT THE UNIT MOUNTING GASKET SHOULD NOT PROTRUDE MORE THAN 0.19[5] ABOVE THE PLANE DEFINED BY THE MOUNTING PAD SURFACES TO ENSURE PROPER AIR SEAL.

5.0 ALL DIMENSIONS SHOWN ARE IN INCHES, WITH THE METRIC CONVERSION IN [MILLIMETERS].

FOR BEST RESULTS

- (A) DO NOT LOAD CARGO AGAINST THE INTERNAL BULKHEAD(S).
- (B) USE INTERNAL BULKHEAD(S) WITH VERTICAL RIBBING TO PROMOTE AIR CIRCULATION AROUND THE CARGO.
- (C) LOAD CARGO ON PALLETS OR CARTS, ESPECIALLY WHEN FLAT FLOORING IS USED.

G	UPDATED SHEET INDEX. SEE SHEET 4.	PCA72N253GP06				ZMG	03NOV06
F	ADDED LED LIGHT BAR TO CROSS REF. INDEX AND UPDATED LIGHT BAR KIT NO. UPDATED SHEET INDEX. REMOVED OPERATION INSTRUCTIONS. SEE SHEETS 2,3,5 AND 6.	72N207GP06				ZMG	07FEB06
E	UPDATED SHT INDEX PER PCA72N209GP04.					ZMG	4/7/04
D	UPDATED SHT. INDEX PER IPCA72N200GP00 SHT.99.					ZMG	9/14/00
C	UPDATED SHT INDEX. SEE SHT 4.	PCA72N218GP00				MED	7/11/00
SYM	REVISION RECORD	ENGRG.	DATE	APPLICATION ENGRG.	DATE	DRAWN BY	DATE

SUPERSEDES

TITLE

INSTALLATION INSTRUCTIONS
TM900/1000 MULTI-TEMP (NDA-93/4 M/T)

DRAWING NO.

98-03198
SHT. 1 OF

REV

G

SEE SEPARATE PARTS LIST

SHEET	REV	G	F	F	G	F	F	A
INDEX	SHEET	1	2	3	4	5	6	7



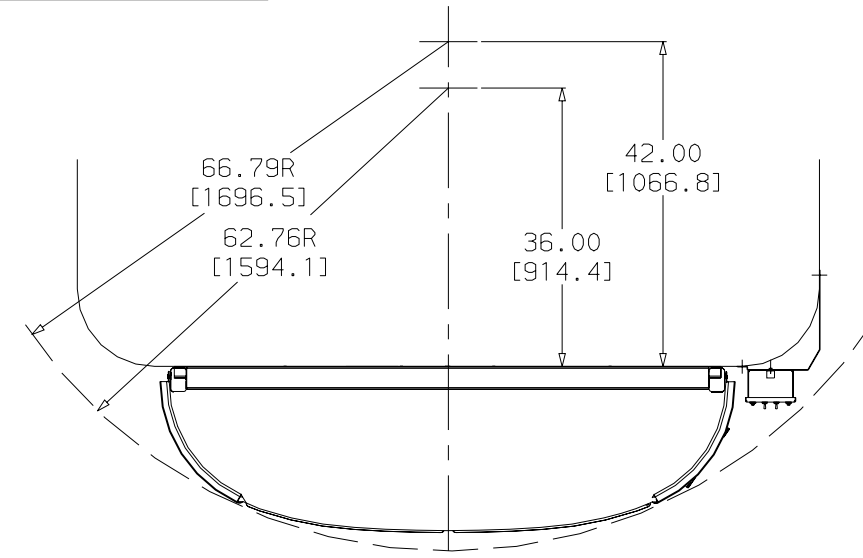
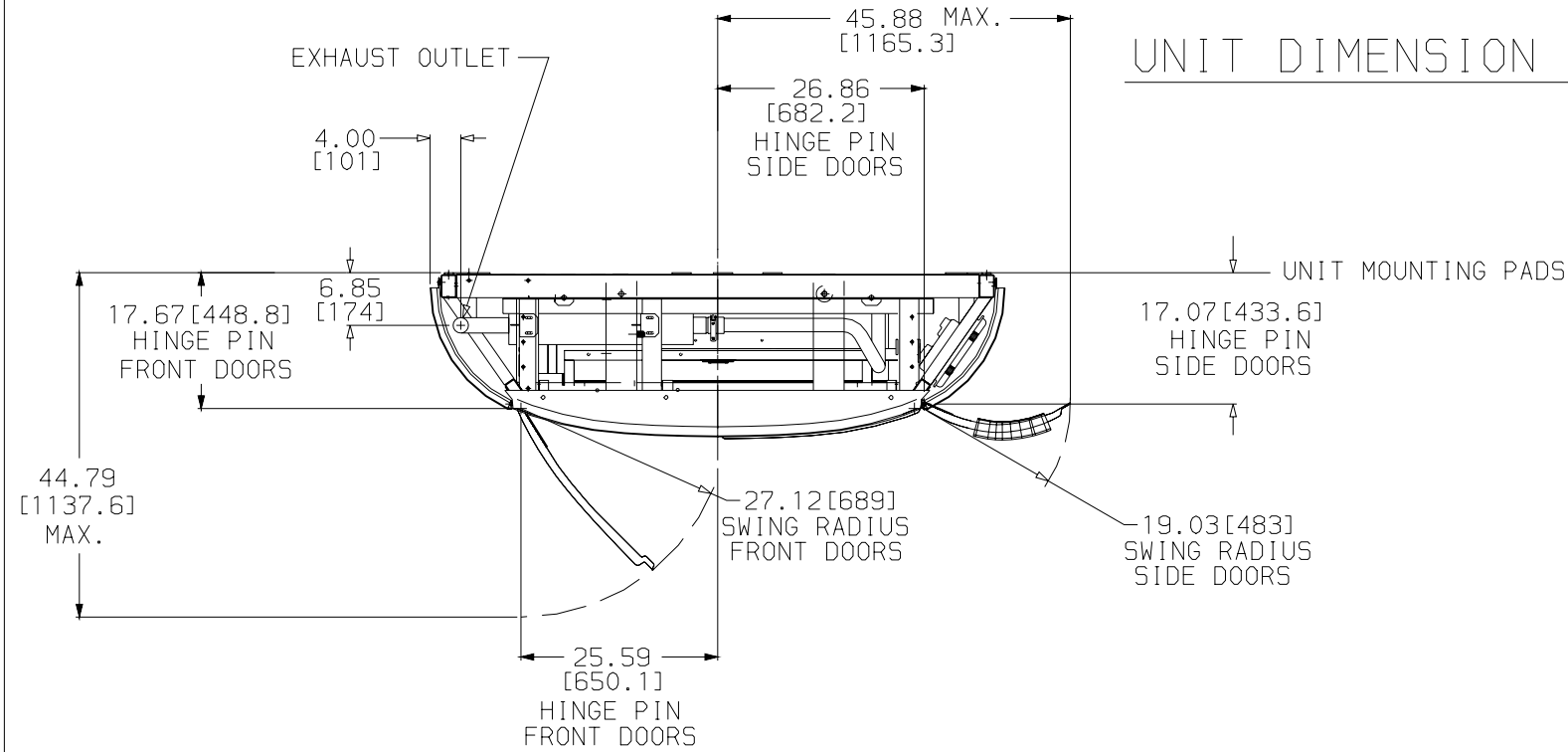
UNITED TECHNOLOGIES
CARRIER
TRANSCOLD

Carrier Transcold Division
Carrier Corporation
P.O. Box 4805
Syracuse, New York 13221

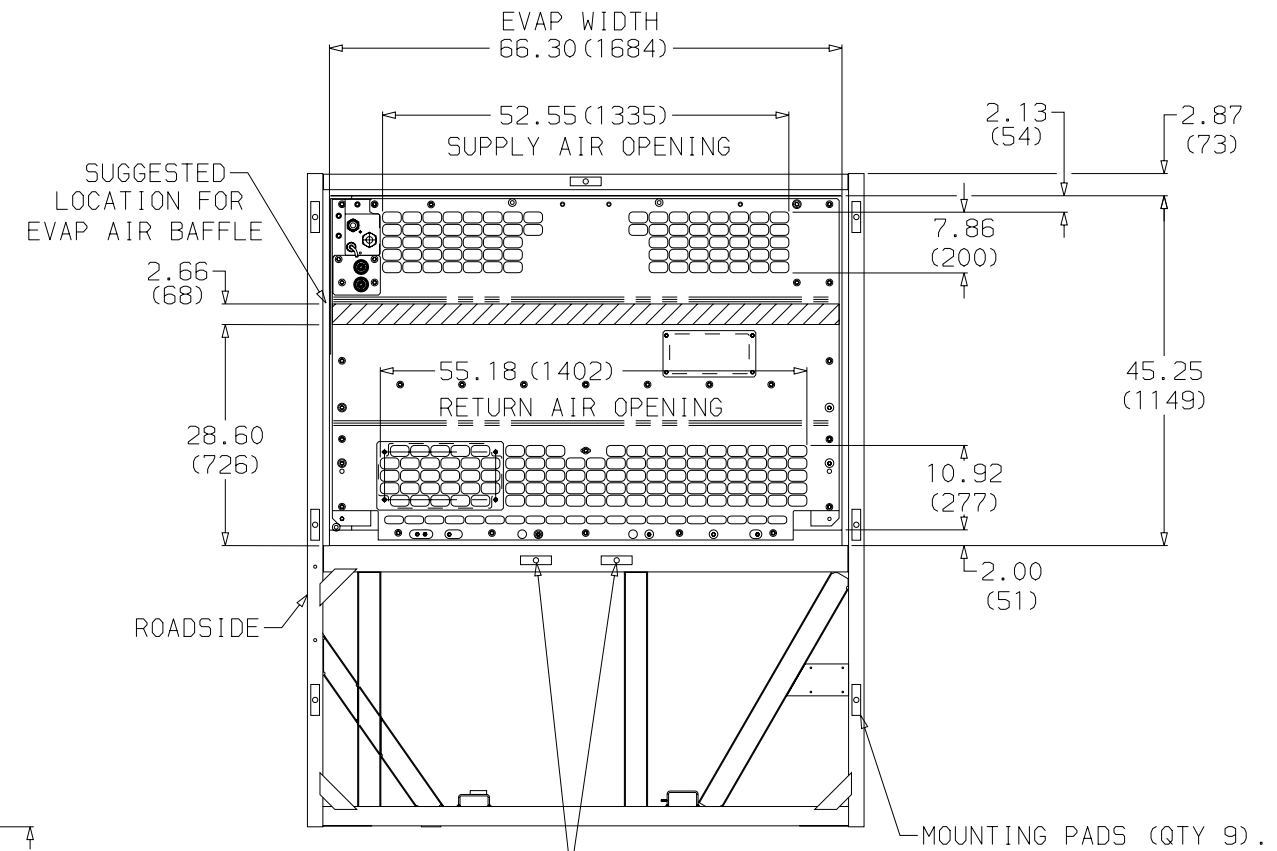
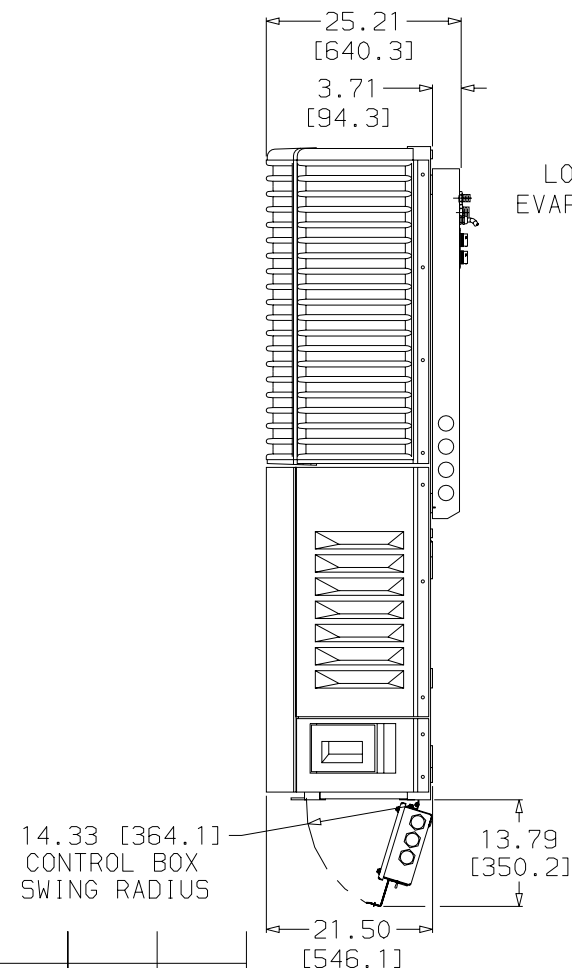
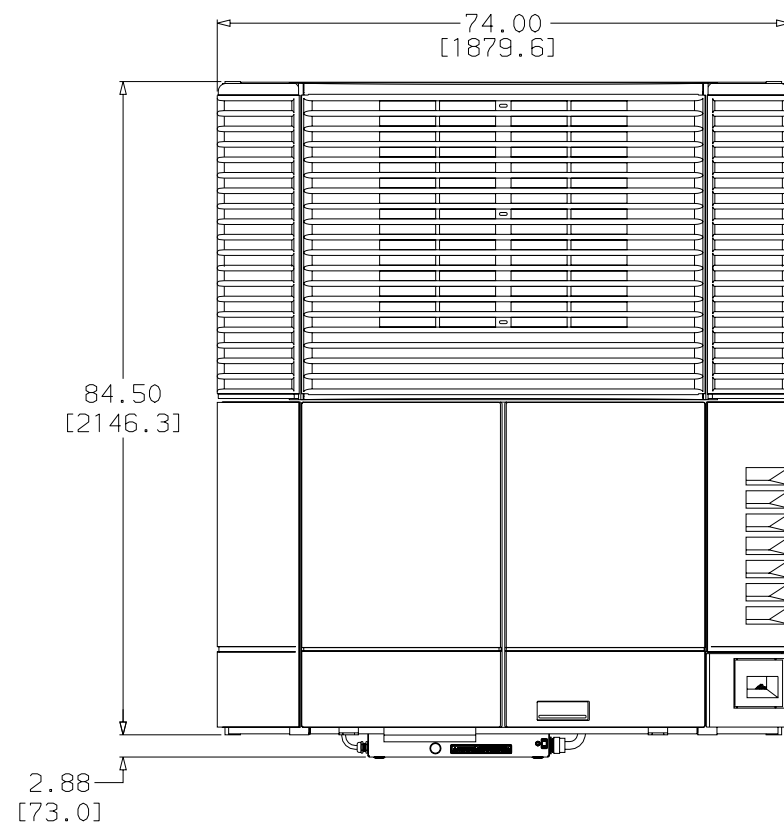
THIS DOCUMENT IS THE PROPERTY OF CARRIER CORPORATION AND IS DELIVERED UPON THE EXPRESS CONDITION THAT THE CONTENTS WILL NOT BE DISCLOSED OR USED WITHOUT CARRIER CORPORATION'S WRITTEN CONSENT.

SUBMISSION OF THESE DRAWINGS OR DOCUMENTS DOES NOT CONSTITUTE PART PERFORMANCE OR ACCEPTANCE OF CONTRACT

UNIT DIMENSION INFORMATION



SWING RADIUS



NOTE: EITHER LOCATION MAY BE USED BUT ROADSIDE LOCATION OFFERS EASIER ACCESS. PLUG UNUSED HOLE AFTER INSTALLATION. (SEE SHEET 4)

E	REMOVED NOTE FOR OLD SERIAL PLATE LOCATION. RELOCATED DIM 28.60 AND 2.66 TO OPPOSITE SIDE OF VIEW.					ZMG	07FEB06
SYM	REVISION RECORD	ENGRG.	DATE	APPLICATION ENGRG.	DATE	DRAWN BY	DATE

SUPERSEDES	TITLE	DRAWING NO.	REV
	INSTALLATION INSTRUCTIONS	98-03198	F
	TM900/1000 MULTI-TEMP (NDA-93/4 M/T)	SHT. 2 OF	



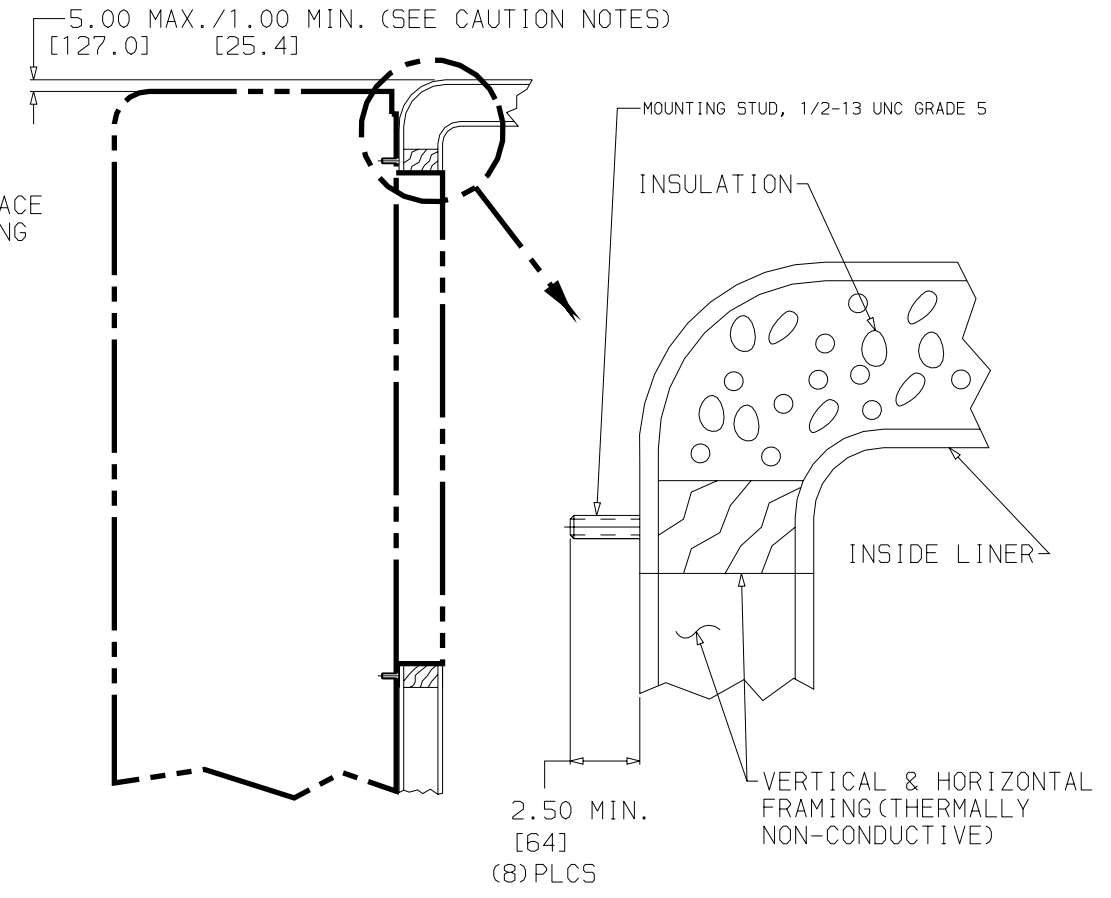
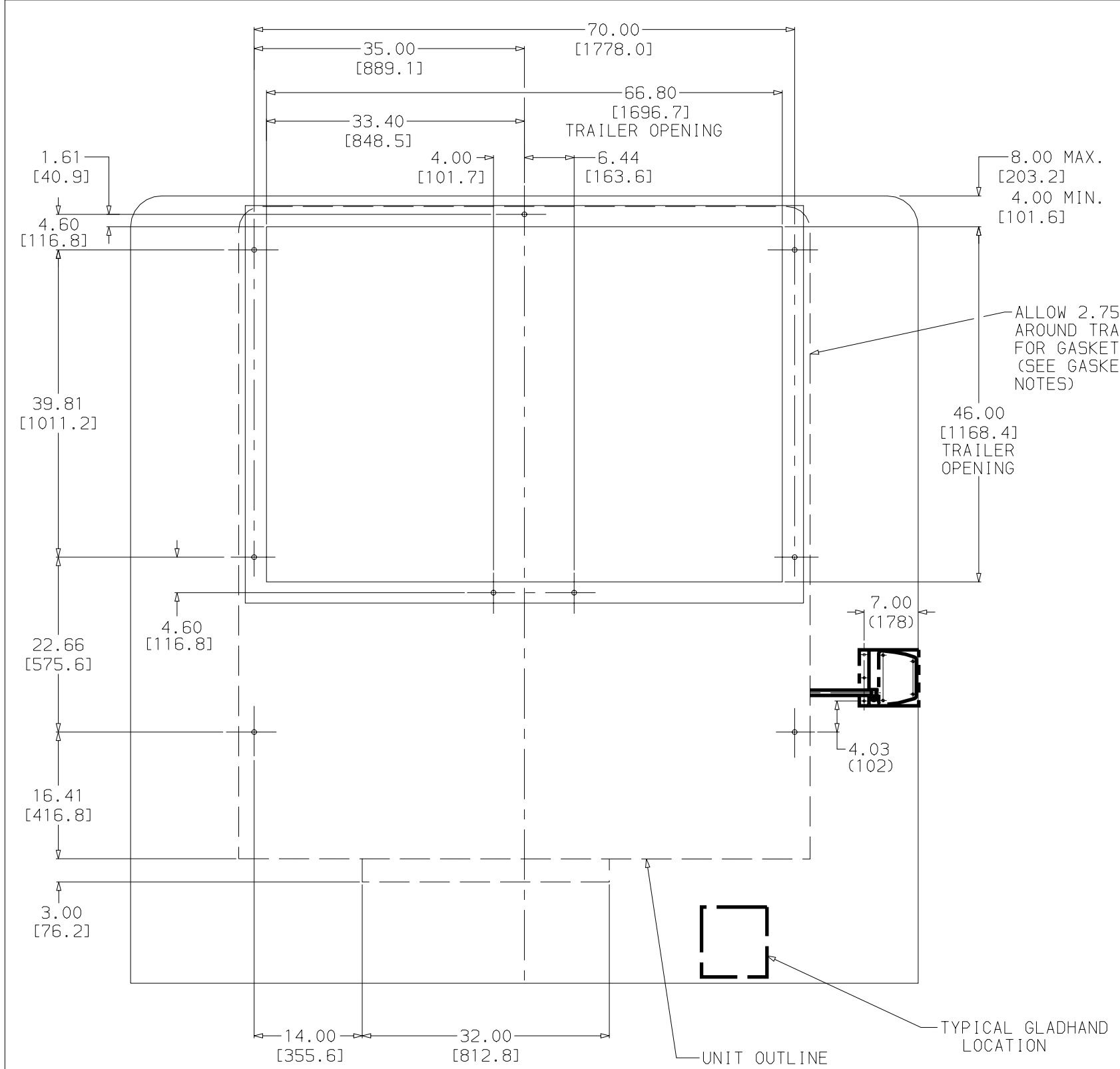
UNITED TECHNOLOGIES CARRIER TRANSCOLD
 Carrier Transicold Division
 Carrier Corporation
 P.O. Box 4805
 Syracuse, New York 13221

THIS DOCUMENT IS THE PROPERTY OF CARRIER CORPORATION AND IS DELIVERED UPON THE EXPRESS CONDITION THAT THE CONTENTS WILL NOT BE DISCLOSED OR USED WITHOUT CARRIER CORPORATION'S WRITTEN CONSENT.

SUBMISSION OF THESE DRAWINGS OR DOCUMENTS DOES NOT CONSTITUTE PART PERFORMANCE OR ACCEPTANCE OF CONTRACT

CAUTION: UNIT MOUNTING SURFACES OF TRAILER THAT CONTACT THE UNIT MOUNTING PADS MUST BE UNI-PLANAR TO WITHIN 0.13[3] TO PREVENT DISTORTION OF UNIT AND/OR TRAILER.

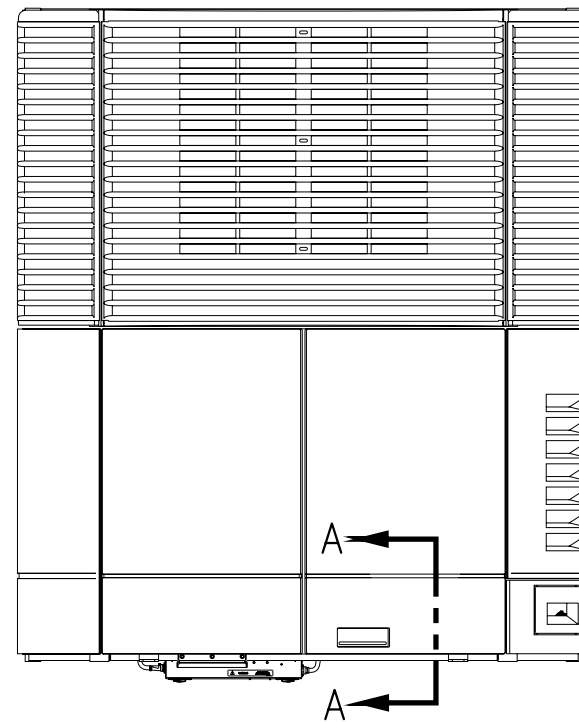
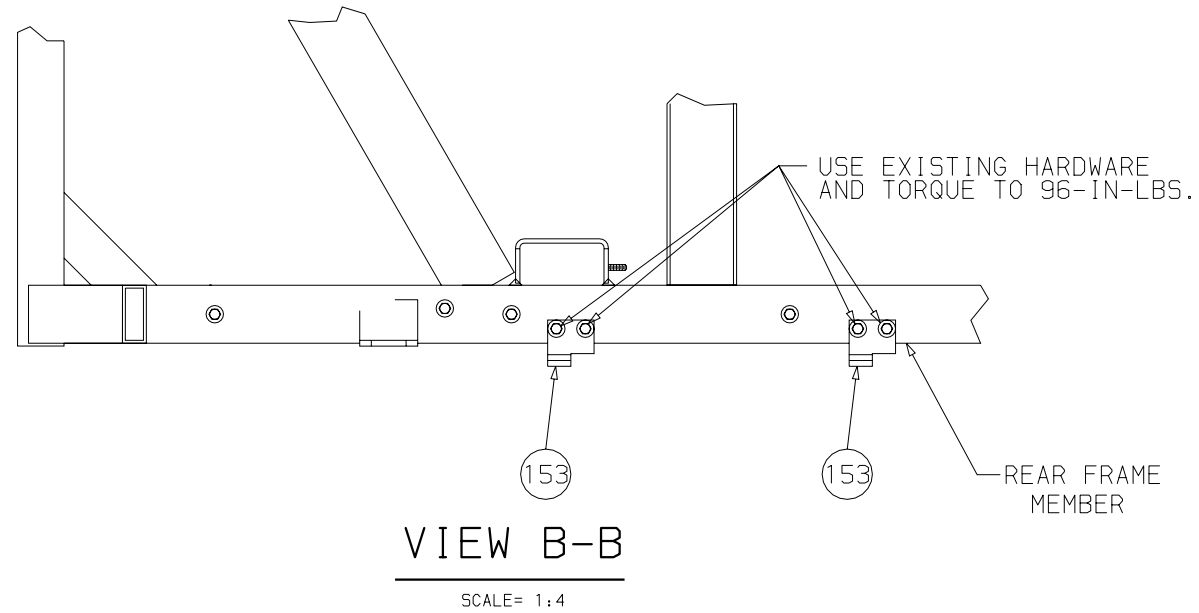
CAUTION: TRAILER SURFACES THAT CONTACT THE UNIT MOUNTING GASKET SHOULD NOT PROTRUDE MORE THAN 0.19[5] ABOVE THE PLANE DEFINED BY THE MOUNTING PAD SURFACES TO ENSURE PROPER AIR SEAL.



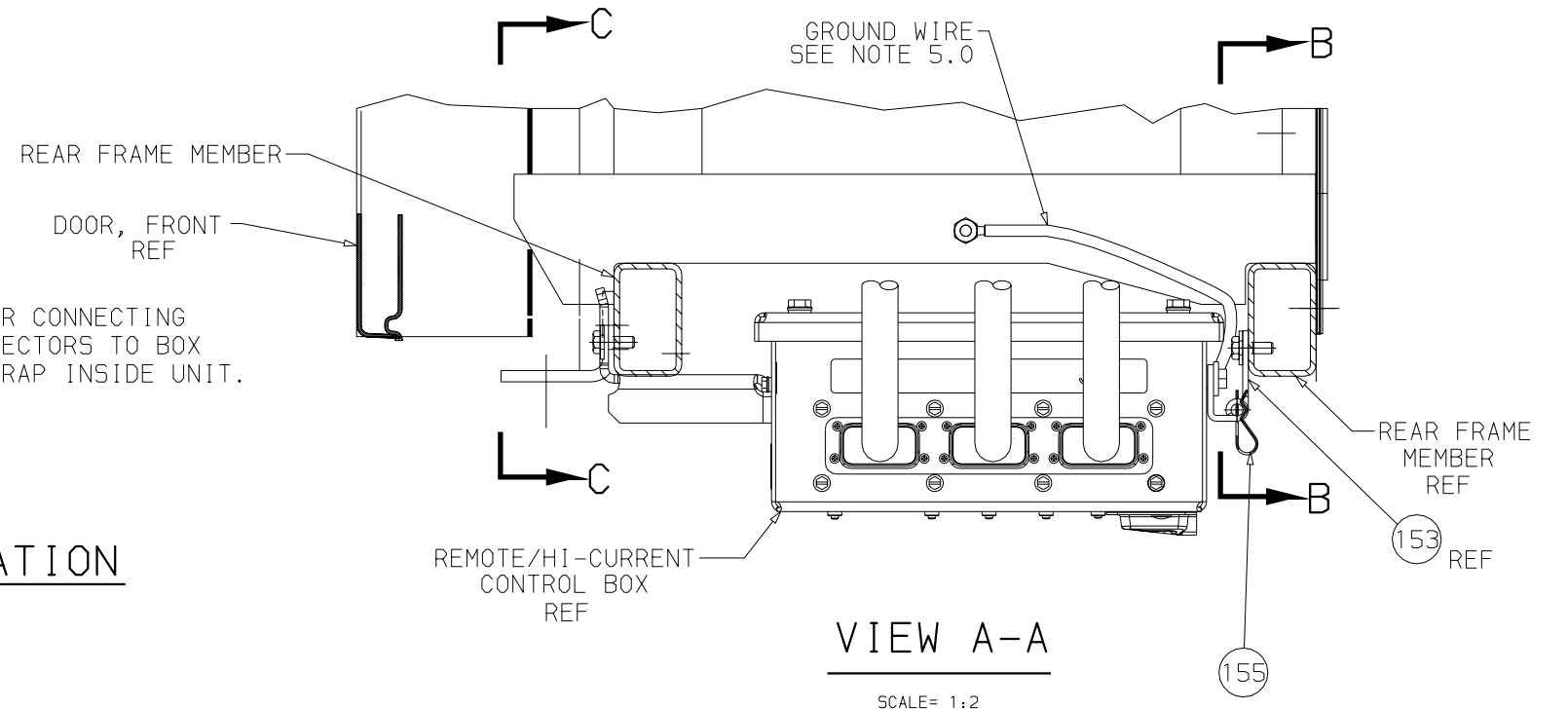
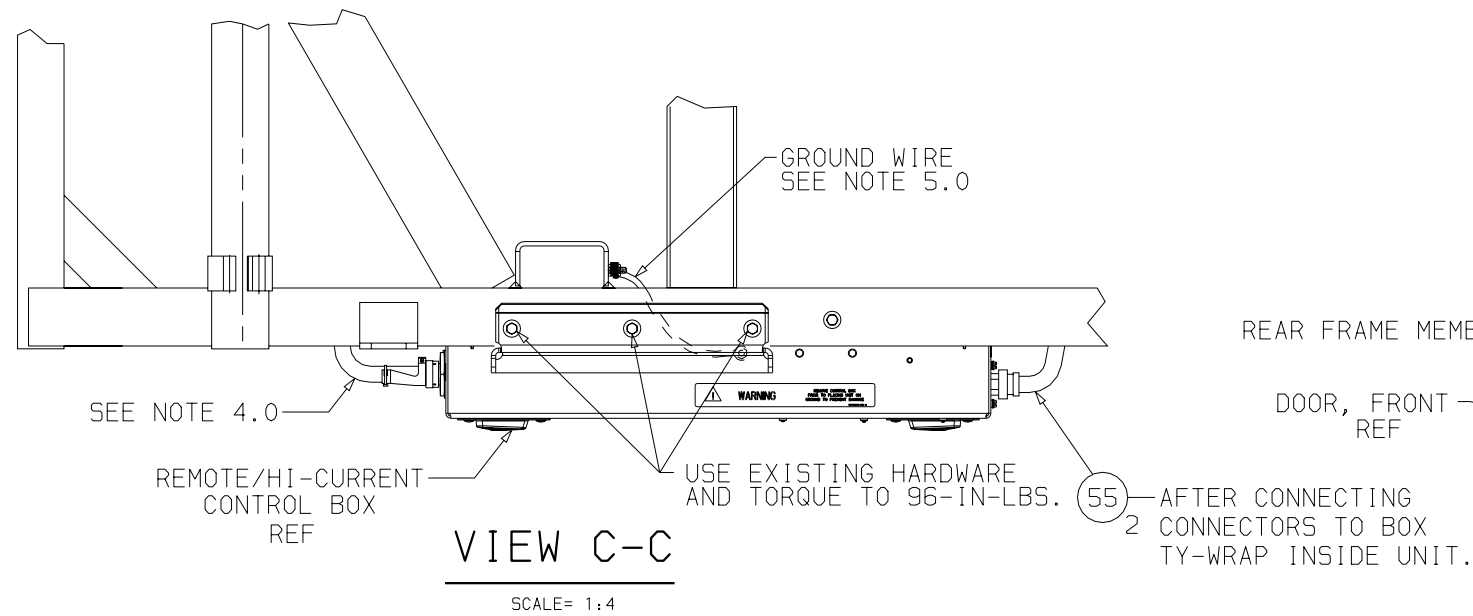
TRAILER BODY PREPARATION

F	REVISED EVAP OPENING DIM 8.00 MAX/4.00 MIN WAS 4.00. MOUNTING STUD LENGTH 2.50 WAS 3.00. ADDED CALLOUT MOUNTING STUD, 1/2-13 UNC GRADE 5. ADDED UNDERMOUNT CONT. BOX OUTLINE DIMENSIONS. SEE PCA.					ZMG	07FEB06
B	ADDED HOLE AND DIM 6.44.	PCA72N217GP00				GMC	6/22/00
SYM	REVISION RECORD		ENGRG.	DATE	APPLICATION ENGRG.	DATE	DRAWN BY DATE

SUPERSEDES	TITLE	INSTALLATION INSTRUCTIONS TM900/1000 MULTI-TEMP (NDA-93/4 M/T)	DRAWING NO. 98-03198 SHT. 3 OF	REV F
------------	-------	---	--------------------------------------	----------



- 1.0 INSTALL THE 2 HINGES (ITEM 153) ONTO REAR FRAME MEMBER USING EXISTING HARDWARE AS SHOWN IN VIEW B. INSTALL HAIRPIN CLIP (ITEM 155) ON HINGES. USING THE HIGH VOLTAGE CONTROL BOX TO INSURE CORRECT HINGE ALIGNMENT. TIGHTEN SCREWS SECURELY.
 - 2.0 USE EXISTING HARDWARE ON FRONT FRAME MEMBER TO SECURE CONTROL BOX TO UNIT. TIGHTEN SCREWS SECURELY.
- IMPORTANT
- 3.0 MAKE HARNESS CONNECTIONS AND VERIFY CONNECTORS ARE SECURELY LOCKED IN PLACE ON CONTROL BOX.
 - 4.0 VERIFY THAT THE STRAIN RELIEF ON THE HI-VOLTAGE CONNECTOR IS CORRECTLY ORIENTED WITH THE DRAIN FACING DOWN. IF NOT, CORRECT ORIENTATION TO PROPER POSITION.
- IMPORTANT
- 5.0 LOCATE EXTERNAL GROUND WIRE ON HIGH VOLTAGE CONTROL BOX AND ROUTE TO GROUND STUD ON FRAME. USE EXISTING HARDWARE TO ATTACH GROUND TO FRAME. TORQUE GROUNDING NUT TO 72 IN-LBS. REAPPLY CORROSIVE INHIBITOR TO GROUND CONNECTION.



HIGH VOLTAGE CONTROL BOX INSTALLATION

G	ADDED NOTE 5.0 AND GROUND WIRE TO CONTROL BOX INSTALLATION. ADDED TORQUE TO 96IN-LBS TO CALLOUTS. PER PCA72N2536P06				ZMG	03NOV06
E	ADDED NOTE 4.0 AND UPDATED CONTROL BOX. PCA72N2096P04				ZMG	4/7/04
C	ADDED ITEM 155. PCA72N2186P00				MED	7/11/00
-	INITIAL RELEASE PER PCA729215G				ZMG	05/26/99
SYM	REVISION RECORD	ENGRG.	DATE	APPLICATION ENGRG.	DATE	DRAWN BY DATE

SUPERSEDES

TITLE

INSTALLATION INSTRUCTIONS
TM900/1000 MULTI-TEMP (NDA-93/4 M/T)

DRAWING NO.
98-03198
SHEET 4 OF

REV
G



NOTE: BULKHEAD AND AIR CHUTE SHOWN ARE OPTIONAL FEATURES. FOR BEST AIR CIRCULATION AND PRODUCT PROTECTION, CARRIER TRANSCOLD HIGHLY RECOMMENDS THE USE OF BULKHEADS AND AIR CHUTES. CONTACT YOUR DEALER OR CARRIER TRANSCOLD FOR RECOMMENDATIONS.

UNIT INSTALLATION

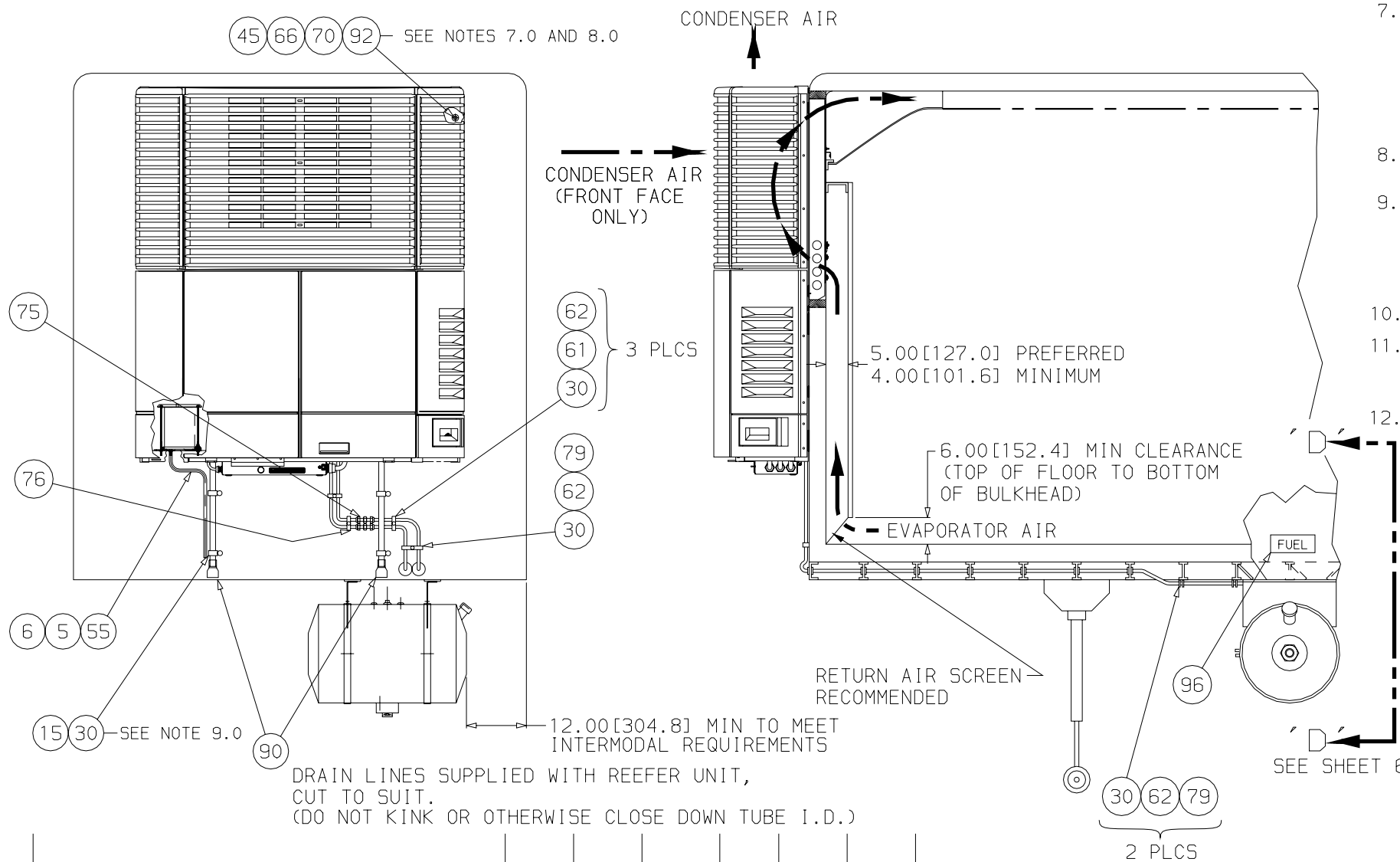
PREPARE UNIT FOR INSTALLATION:

- 1.0 PREPARE THE BODY TO RECEIVE THE UNIT. DIMENSIONS FOR EVAPORATOR OPENING AND MOUNTING STUD LOCATIONS ARE ON SHEET 3 OF THIS DRAWING.
- 2.0 REMOVE WIRE TIES HOLDING DEFROST DRAIN HOSES, COOLANT OVERFLOW TUBE, AND FUEL LINES. PLACE LINES WHERE THEY WILL NOT BE CAUGHT BETWEEN THE UNIT FRAME AND THE TRAILER WALL.
- 3.0 OPEN FRONT DOORS OF UNIT, REMOVE BELT GUARD (4 BOLTS).
- 4.0 OPEN SIDE DOORS TO ALLOW ACCESS TO MOUNTING STUD LOCATIONS ON UNIT.
- 5.0 INSTALL BATTERY ACCORDING TO INSTRUCTIONS ON SHEET 7. IF UNIT HAS BEEN SUPPLIED WITH BATTERY, CONNECT BATTERY CABLES ACCORDING TO THE INSTRUCTIONS ON SHEET 7.
- 6.0 PREPARE THE UNIT FOR LIFTING:
STANDING ON A LADDER OR WORK-STAND, HOOK LIFTING APPARATUS (LIFTING BAR OR STRAPS WITH SUFFICIENT CAPACITY TO SUPPORT UNIT AND BATTERY) THROUGH THE LIFTING EYES. LIFT POINT SHOULD BE CENTERED OVER THE UNIT.

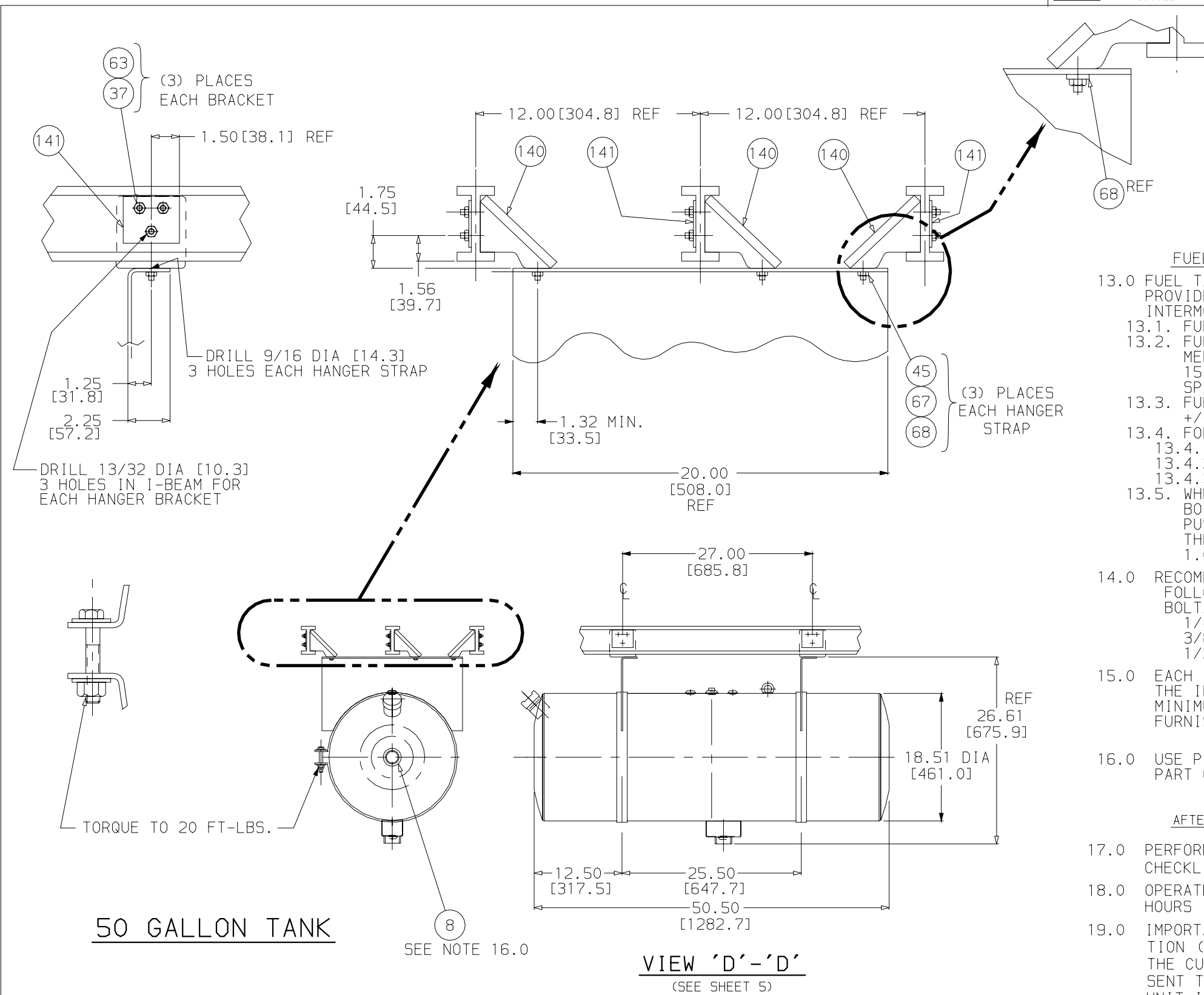
UNIT INSTALLATION:

- 7.0 RAISE THE UNIT AND INSTALL IN THE BODY OPENING. ENSURE THAT ALL EIGHT STUDS ARE FULLY ENGAGED IN THE UNIT FRAME. PLACE WASHER (ITEM 70) AND LOCK-NUT (ITEM 45) ON EACH OF THE 8 STUDS. (NOTE: THE LOWER CENTER STUD MUST BE ACCESSED FROM THE FRONT OF THE UNIT. IF BELT GUARD WAS NOT REMOVED EARLIER, IT MUST BE REMOVED NOW TO ALLOW ACCESS TO THIS STUD.) SNUG THE NUTS, THEN EVENLY TIGHTEN ALL EIGHT TO 60 FT-LB/81.6 NM USING A TORQUE WRENCH. REMOVE LIFTING APPARATUS.
- 8.0 INSTALL BUTTON PLUGS (ITEM 92) IN UNIT FRAME WHERE MOUNTING STUDS ARE LOCATED AND ADDITIONAL UNUSED HOLE (SEE SHT.2).
- 9.0 ROUTE DEFROST DRAIN HOSES DOWN THE FRONT OF THE TRAILER AND CLAMP TO FRONT WALL OF TRAILER USING 2 CLAMPS (ITEM 15) AND 2 THREAD FORMING SCREWS (ITEM 30) FOR EACH DRAIN HOSE. CUT HOSE TO PROPER LENGTH (APPROXIMATELY 3.00[76.2] ABOVE 5th-WHEEL PLATE) AND INSTALL KAZOOS (ITEM 90) ON THE HOSES.
- 10.0 RE-INSTALL BELT GUARD.
- 11.0 INSTRUCTIONS FOR FUEL LINE CONNECTION ARE SUPPLIED WITH THE FUEL TANK KIT. INSTRUCTIONS FOR LIGHT BAR INSTALLATION ARE INCLUDED WITH THE LIGHT BAR KIT.
- 12.0 ATTACH DRAIN HOSE (ITEM 6) TO BARB ON BOTTOM OF BATTERY TRAY USING CLAMP (ITEM 5). ROUTE AND CLAMP HOSE TO UNIT DRAIN LINE USING WIRE TIES (ITEM 55); REFER TO VIEW IN LEFT CORNER.

(NOTES CONTINUED ON SHEET 6)



F	CORRECTED KAZOO DETAIL AND NOTE INTERMODAL REQUIREMENTS WAS PIGGYBACK REQUIREMENTS. 72N2076P06					ZMG	07FEB06	SUPERSEDES	TITLE	INSTALLATION INSTRUCTIONS TM900/1000 MULTI-TEMP (NDA-93/4 M/T)	DRAWING NO. 98-03198	REV F
SYM	REVISION RECORD	ENGRG.	DATE	APPLICATION ENGRG.	DATE	DRAWN BY	DATE				SHT. 5 OF	



(NOTES CONTINUED FROM SHEET 5)

FUEL TANK INSTALLATION:

- 13.0 FUEL TANKS INSTALLED IN ACCORDANCE WITH THESE GUIDELINES WILL PROVIDE ADEQUATE SUPPORT IN NORMAL SERVICE ENVIRONMENTS INCLUDING INTERMODAL APPLICATIONS.
- 13.1. FUEL TANK SUPPORT STRAPS MUST ATTACH TO THREE CROSS MEMBERS.
- 13.2. FUEL TANK SUPPORT STRAPS WILL INTERFACE WITH THREE CROSS MEMBERS IF THEY ARE ON 12-INCH CENTERS. CROSS MEMBERS ON 15-INCH CENTERS WILL REQUIRE A STRUCTURAL STEEL CHANNEL TO SPAN THEM. THIS CHANNEL IS NOT SUPPLIED BY CARRIER TRANSCICOLD.
- 13.3. FUEL TANK SHOULD BE CENTERED BETWEEN FUEL TANK STRAPS. $\pm 1.50"$ [38.1]
- 13.4. FOR MAXIMUM MECHANICAL OR ELECTRICAL FUEL PUMP PERFORMANCE:
- 13.4.1 MINIMIZE FUEL LINE LENGTH.
 - 13.4.2 MINIMIZE NUMBER OF CONNECTORS AND UNIONS.
 - 13.4.3 NEVER USE ELBOW FITTINGS.
- 13.5. WHEN INSTALLING FLEXIBLE TUBE INTO THE TANK, PASS THE TUBES, BOTH SUPPLY & RETURN, THROUGH THE COMPRESSION FITTINGS AND PUSH TUBES TO THE BOTTOM OF THE TANK. WHEN THE TUBES REACH THE BOTTOM OF THE TANK, PULL THEM BACK UP APPROXIMATELY 1.00" [25.4], THEN TIGHTEN THE COMPRESSION NUT.
- 14.0 RECOMMENDED TORQUE VALUES FOR FURNISHED LOCK NUTS ARE AS FOLLOWS:
- | BOLT/THREAD | TORQUE (FT-LB) | TORQUE (NEWTON-METRE) |
|-------------|--------------------|-----------------------|
| 1/4-20 | 9 | 12.24 |
| 3/8-24 | 30 | 40.8 |
| 1/2-13 | 60-EXCEPT AS NOTED | 81.6-EXCEPT AS NOTED |
- 15.0 EACH INSTALLATION KIT CONTAINS SUFFICIENT CLAMPS FOR SECUREMENT. THE INSTALLER MAY ROUTE FUEL LINES THRU CONDUIT, 3/4 INCH (75) MINIMUM, AS AN ALTERNATE TO USING GROMMETS. (CONDUIT AND GROMMETS FURNISHED AS PART OF INSTALLATION KIT).
- 16.0 USE PIPE SEALANT ON ALL PIPE CONNECTIONS (NOT FURNISHED AS PART OF INSTALLATION KIT).

AFTER INSTALLATION

- 17.0 PERFORM PRE-DELIVERY INSPECTION (ITEM 99). COPIES OF COMPLETED CHECKLIST SHOULD BE SUPPLIED TO SELLING DEALER AND CUSTOMER.
- 18.0 OPERATE UNIT IN CONTINUOUS RUN (MANUAL) MODE FOR A MINIMUM OF 8 HOURS (12 HOURS PREFERRED). PERFORM FINAL INSPECTION ON UNIT.
- 19.0 IMPORTANT: PRIOR TO FINAL DELIVERY TO CUSTOMER, WARRANTY REGISTRATION (ITEM 101) MUST BE COMPLETED. ONE COPY SHOULD BE PROVIDED TO THE CUSTOMER, ONE COPY TO THE SELLER, AND THE FINAL COPY MUST BE SENT TO CARRIER TRANSCICOLD. IN-SERVICE DATE MUST BE STAMPED ON THE UNIT IN THE PROPER LOCATION (SERIAL NUMBER PLATE) TO ACTIVATE WARRANTY COVERAGE.

50 GALLON TANK

SEE NOTE 16.0

VIEW 'D'-D'
(SEE SHEET 5)

SYM	REVISION RECORD	ENGRG.	DATE	APPLICATION ENGRG.	DATE	DRAWN BY	DATE	SUPERSEDES		TITLE	DRAWING NO.	REV
F	REVISED NOTE 13.0 ... INTERMODAL APPLICATIONS WAS PIGGYBACK APPLICATIONS.					ZMG	07FEB06			INSTALLATION INSTRUCTIONS TM900/1000 MULTI-TEMP (NDA-93/4 M/T)	98-03198 SHT. 6 OF	F



UNITED
TECHNOLOGIES
CARRIER
TRANSCOLD

Carrier Transcold Division
Carrier Corporation
P.O. Box 4805
Syracuse, New York 13221

THIS DOCUMENT IS THE PROPERTY OF CARRIER CORPORATION
AND IS DELIVERED UPON THE EXPRESS CONDITION THAT THE
CONTENTS WILL NOT BE DISCLOSED OR USED WITHOUT CARRIER
CORPORATION'S WRITTEN CONSENT.

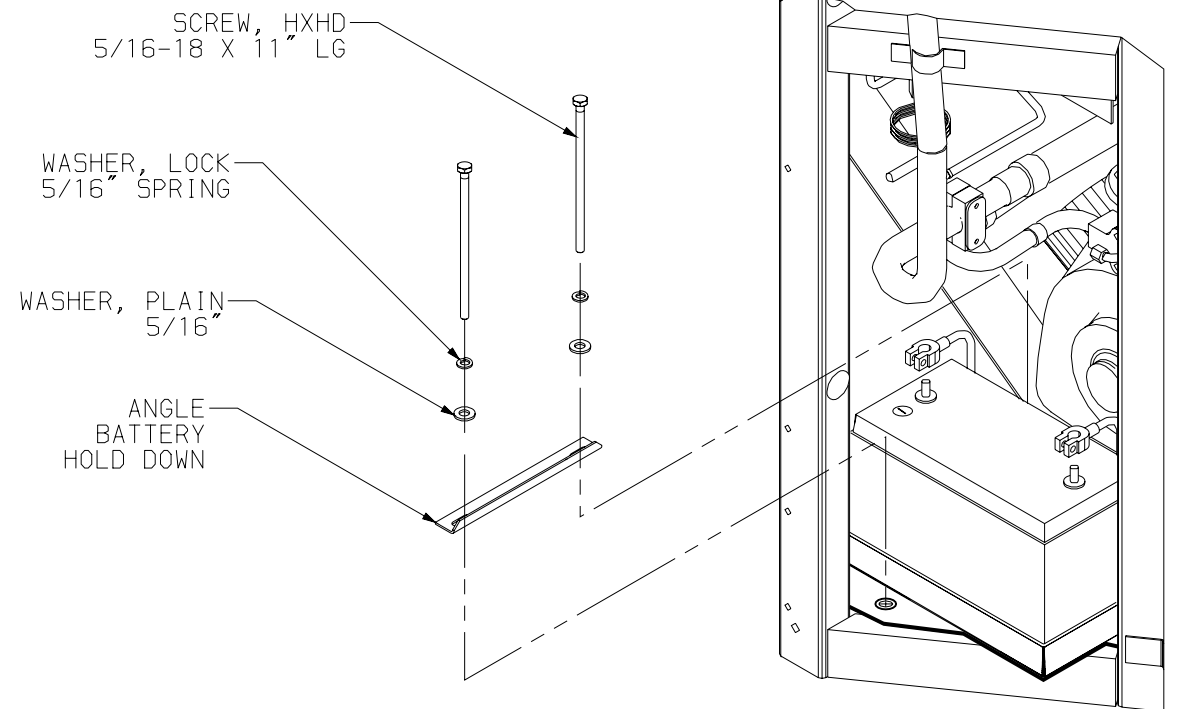
SUBMISSION OF THESE DRAWINGS OR DOCUMENTS
DOES NOT CONSTITUTE PART PERFORMANCE OR
ACCEPTANCE OF CONTRACT

(SEE NOTE 13.4 & 13.5)
SUPPLY FROM TANK TO UNIT. (87)
(3/8 O.D.)

(SEE NOTE 13.4 & 13.5)
RETURN FROM UNIT
(1/4 O.D.)

TANK AND PUMP
FUEL LINE CONFIGURATION

1.00 [25.4]
SEE NOTE 13.5



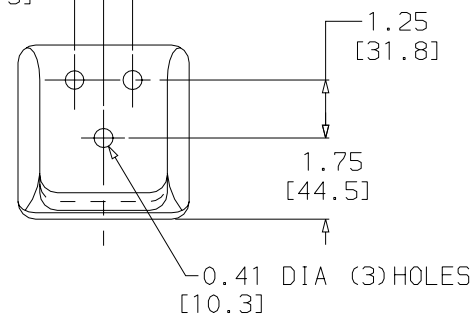
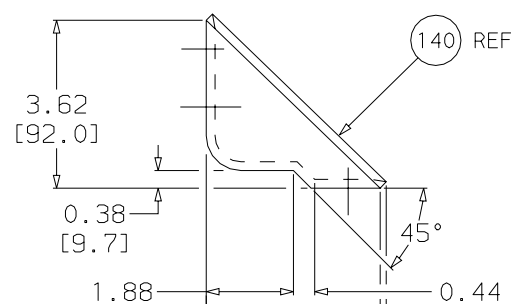
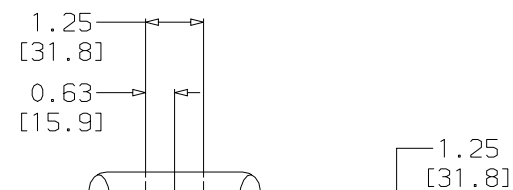
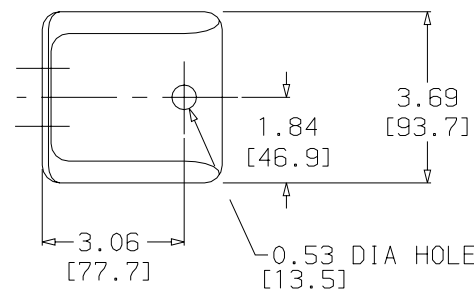
ITEMS SUPPLIED BY BATTERY KIT
(PARTS IN POLY BAG AND/OR ATTACHED TO BATTERY TRAY)

UNITS SUPPLIED WITHOUT BATTERY INSTALLED

- 1.0 CUT WIRE TIE HOLDING THESE PARTS IN THE BATTERY TRAY AND REMOVE PARTS. PLACE BATTERY IN TRAY WITH NEGATIVE (-) TERMINAL TO THE REAR OF THE UNIT (AS SHOWN). CONNECT BATTERY CABLES (THE USE OF A CORROSION INHIBITOR ON THE TERMINALS IS RECOMMENDED); RED CABLE TO POSITIVE (+) TERMINAL, BLACK CABLE TO THE NEGATIVE (-) TERMINAL. CABLES SHOULD BE ROUTED TOWARD THE COMPRESSOR (AS SHOWN). TIGHTEN TERMINAL CONNECTORS SECURELY.
- 2.0 INSTALL SCREWS AND HOLD-DOWN ANGLE USING PLAIN AND LOCK WASHERS AS SHOWN. SECURELY TIGHTEN THE SCREWS TO PREVENT MOVEMENT OF THE BATTERY.
- 3.0 POSITION TERMINAL COVERS SUPPLIED WITH CABLES OVER TERMINALS.

UNITS SUPPLIED WITH BATTERY INSTALLED

- 1.0 CUT WIRE TIE(S) THAT HOLD CABLES TO UNIT FRAME.
- 2.0 CONNECT RED BATTERY CABLE TO THE POSITIVE (+) BATTERY TERMINAL; CONNECT BLACK CABLE TO NEGATIVE (-) BATTERY TERMINAL (USE OF CORROSION INHIBITOR IS RECOMMENDED).
- 3.0 POSITION TERMINAL COVERS SUPPLIED WITH CABLES OVER TERMINALS.



HANGER BRACKET DETAIL

DRAWING BEING REVISED
PER PCA72N207GP06 Zeb Guest
01-FEB-2006

A	REVISED ITEM #86 & 87 NOTE'S WAS (SEE NOTE 11.4 & 11.5)	PCA729070G				DHL	09/23/99	SUPERSEDES	TITLE	INSTALLATION INSTRUCTIONS TM900/1000 MULTI-TEMP (NDA-93/4 M/T)	DRAWING NO.	98-03198	REV	A
SYM	REVISION RECORD	ENGRG.	DATE	APPLICATION ENGRG.	DATE	DRAWN BY	DATE				SHT. 7 OF			