



Carrier Transicold Division
Carrier Corporation
P.O. Box 4805
Syracuse, New York 13221

THIS DOCUMENT AND THE INFORMATION CONTAINED THEREIN IS
PROPRIETARY TO CARRIER CORPORATION AND SHALL NOT BE USED
OR DISCLOSED TO OTHERS, IN WHOLE OR IN PART, WITHOUT THE
WRITTEN AUTHORIZATION OF CARRIER CORPORATION.

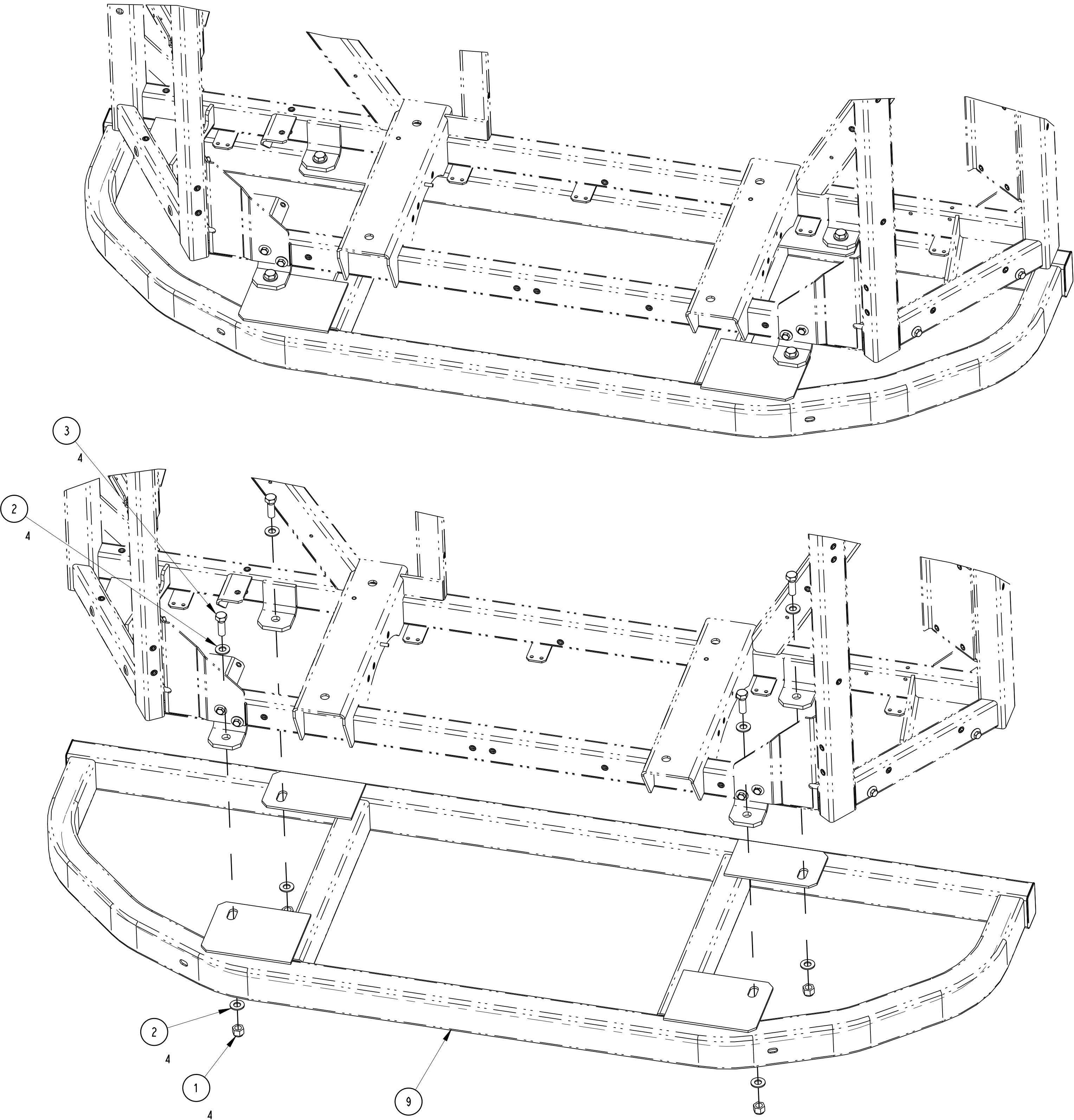
SUBMISSION OF THESE DRAWINGS OR DOCUMENTS
DOES NOT CONSTITUTE PART PERFORMANCE OR
ACCEPTANCE OF CONTRACT

| CTD PART NO. | U.S. ECCN | DESCRIPTION |
|--------------|-----------|---|
| 98-03360-00 | EAR99 | X4 & VECTOR LOWER BUMPER KIT ⓑ |
| 98-03360-01 | EAR99 | VECTOR ADE BUMPER KIT ⓑ |

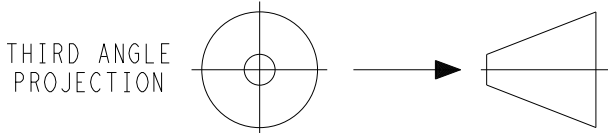
INSTALLATION INSTRUCTIONS:

BUMPER TO UNIT FOR X4:

1. LOOSELY INSTALL BUMPER ONTO FRAME USING ITEM 3 (1/2-13 BOLTS), ITEM 2 (1/2 WASHERS) AND ITEM 1 (1/2-13 LOCK NUTS) TO FRAME MOUNTING ANGLES. ONCE ALL HARDWARE IS INSTALLED BOLTS TORQUE EVENLY TO 65 FT/LBS



| | | | | | | |
|-----|--|-------------|-------|-------|------|------------|
| B | FOR -00 & -01: UPDATED DESCRIPTION IN TABLE. UPDATED SHEET INDEX, SEE SHEET 2. | 14 JUN 2019 | LT-RP | RC | | 72N0305P18 |
| A | INITIAL RELEASE. | 07 JAN 16 | ZMG | | | 72N0200P16 |
| SYM | REVISION RECORD | DATE | BY | ENGR. | M.E. | NPCA NO. |



IMPERIAL INCH FORMAT:
UNLESS OTHERWISE SPECIFIED
DIMENSIONS ARE IN INCHES WITH
METRIC CONVERSIONS IN [MILLIMETERS]

TITLE
INSTALLATION INSTRUCTION
LOWER BUMPER

| | | | |
|-------------|-------|---|---|
| SHEET INDEX | REV | B | B |
| SHEET | SHEET | 1 | 2 |

REV
B

SUPERSEDES: _____

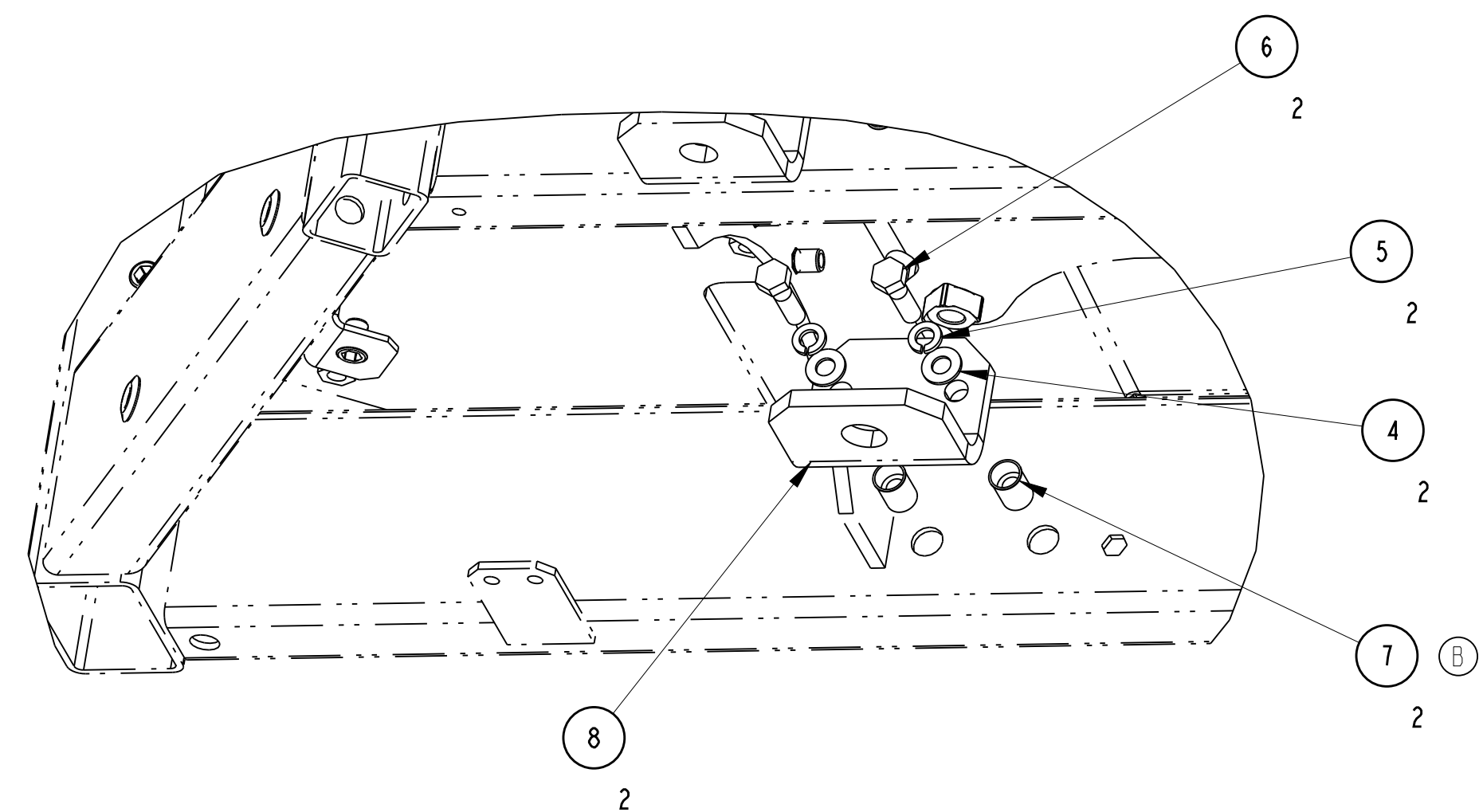
PART CLASSIFICATION: US SEE CHART

DRAWING CLASSIFICATION: US EAR99

INSTALLATION INSTRUCTIONS:

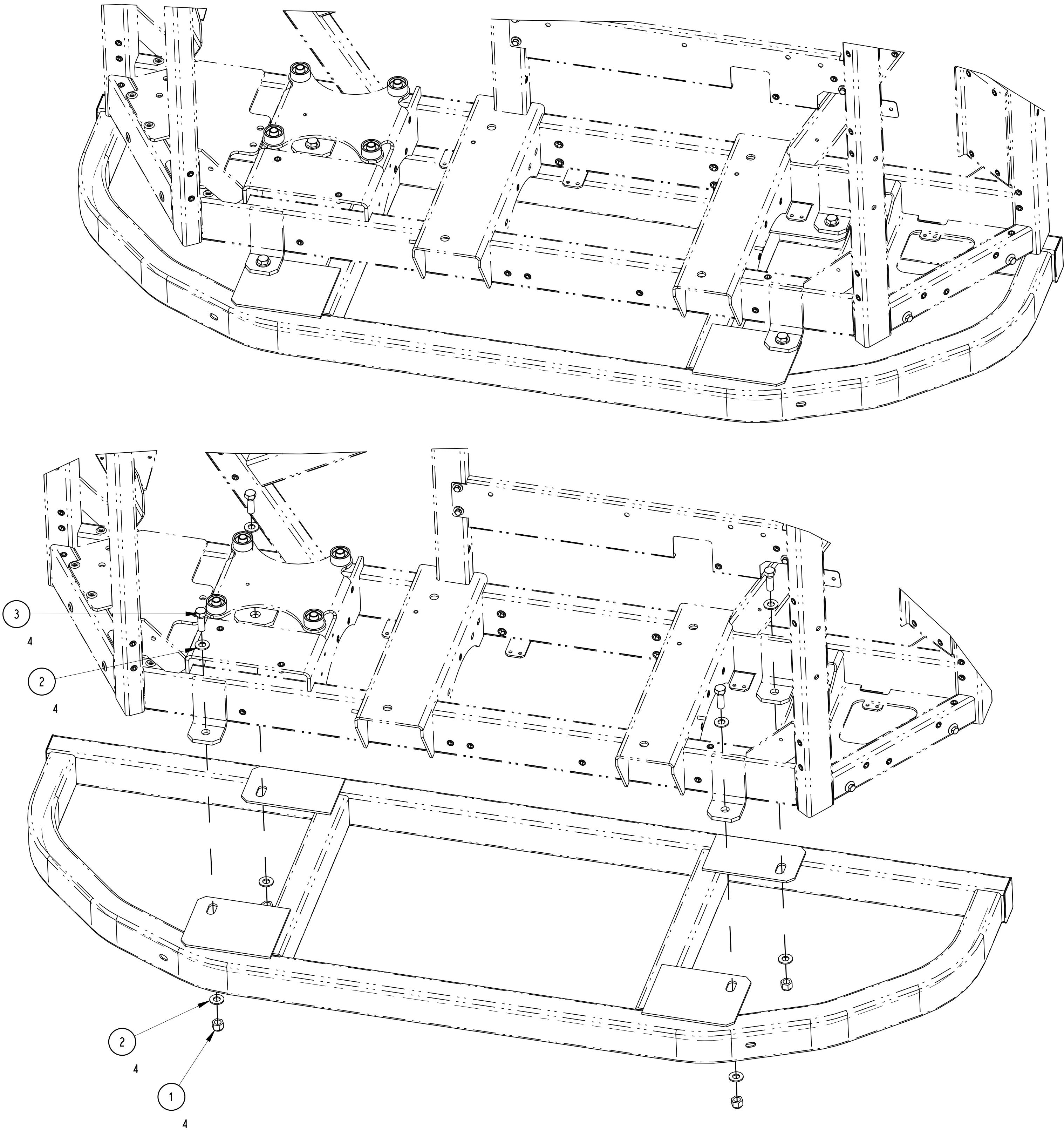
BUMPER TO UNIT FOR VECTOR AND VECTOR ADE:

- Ⓑ 1. INSTALL ITEM 7 (M8 RIVNUT) INTO ROUND HOLES IN FRAME BELOW COMPRESSOR MOUNTING BRACKET. THEN INSTALL ITEM 8 (BRACKET) USING ITEM 6 (M8 SCREW), ITEM 5 (M8 LOCK WASHER) AND ITEM 4 (M8 LOCK WASHER) AND TORQUE TO 34 FT/LBS
2. LOOSLEY INSTALL BUMPER ONTO FRAME USING ITEM 3 (1/2-13 BOLTS), ITEM 2 (1/2 WASHERS) AND ITEM 1 (1/2-13 LOCK NUTS) TO FRAME MOUNTING ANGLES. ONCE ALL HARDWARE IS INSTALLED TORQUE BOLTS EVENLY TO 65 FT/LBS.

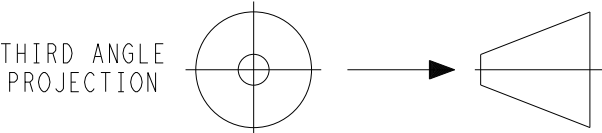


MOUNTING BRACKET VIEW

SCALE 0.400



| | | | | | | |
|-----|--|-------------|-------|-------|------|------------|
| B | REPLACED IT. 7, QTY 2. UPDATED INSTALLATION INSTRUCTIONS NOTE 1. | 14 JUN 2019 | LT-RP | RC | | 72N0305P18 |
| A | INITIAL RELEASE. | 07 JAN 16 | ZMG | | | 72N0200P16 |
| SYM | REVISION RECORD | DATE | BY | ENGR. | M.E. | NPCA NO. |



IMPERIAL INCH FORMAT:
UNLESS OTHERWISE SPECIFIED
DIMENSIONS ARE IN INCHES WITH
METRIC CONVERSIONS IN [MILLIMETERS]

| | | | | | |
|-------|--|-------------|------------------------|-----|---|
| TITLE | INSTALLATION INSTRUCTION LOWER BUMPER | DRAWING NO. | 98-03360 SHEET 2 OF | REV | B |
|-------|--|-------------|------------------------|-----|---|

SUPERSEDES: _____

PART CLASSIFICATION: US SEE CHART