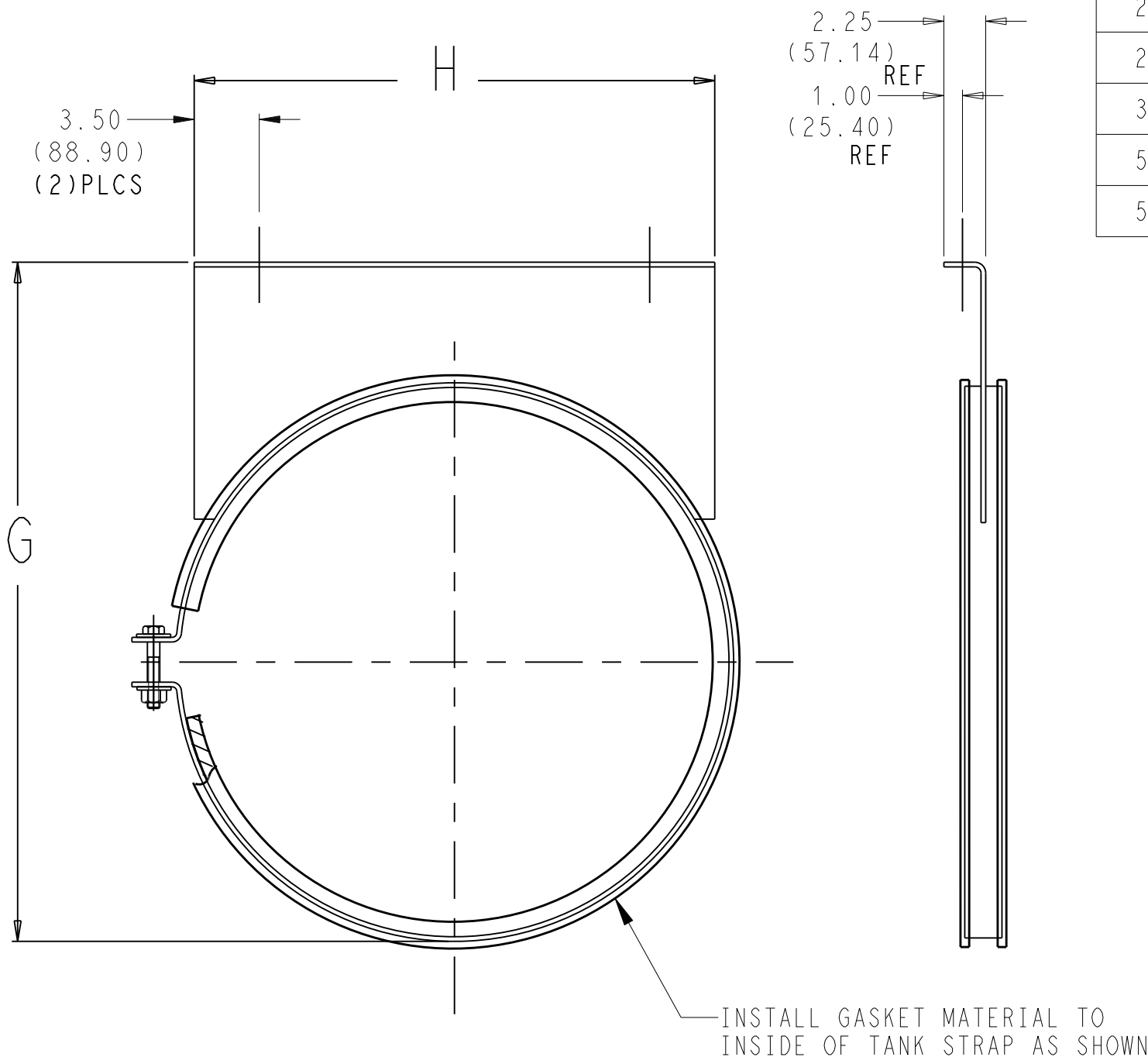


| CONVERSION CHART |                   |
|------------------|-------------------|
| DECIMAL INCHES   | FRACTIONAL INCHES |
| 0.38             | 3/8               |
| 0.41             | 13/32             |
| 0.44             | 7/16              |
| 0.53             | 17/32             |
| 0.63             | 5/8               |
| 1.25             | 1-1/4             |
| 1.50             | 1-1/2             |
| 1.56             | 1-9/16            |
| 1.62             | 1-5/8             |
| 1.75             | 1-3/4             |
| 1.84             | 1-27/32           |
| 1.88             | 1-7/8             |
| 2.25             | 2-1/4             |
| 3.06             | 3-1/16            |
| 3.50             | 3-1/2             |
| 3.62             | 3-5/8             |
| 3.69             | 3-11/16           |
| 3.75             | 3-3/4             |
| 3.88             | 3-7/8             |
| 23.38            | 23-3/8            |
| 26.42            | 26-27/64          |
| 27.44            | 27-7/16           |
| 29.50            | 29-1/2            |
| 31.34            | 31-11/32          |
| 51.84            | 51-27/32          |
| 54.19            | 54-3/16           |

|  |
|--|
| FOR SEPARATE ELECTRIC FUEL<br>PUMP FIELD KIT ORDER NO. |
| 76-00295-06  |



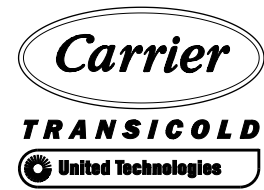
## TANK STRAP & GASKET DETAIL

NOTE: ADD GASKET SUPPLIED W/STRAP PACKAGE  
PRIOR TO MOUNTING STRAP TO TANK

DRAWING NO. 98-02236 SHEET 1 OF 4

PART CLASSIFICATION: US SEE CHART

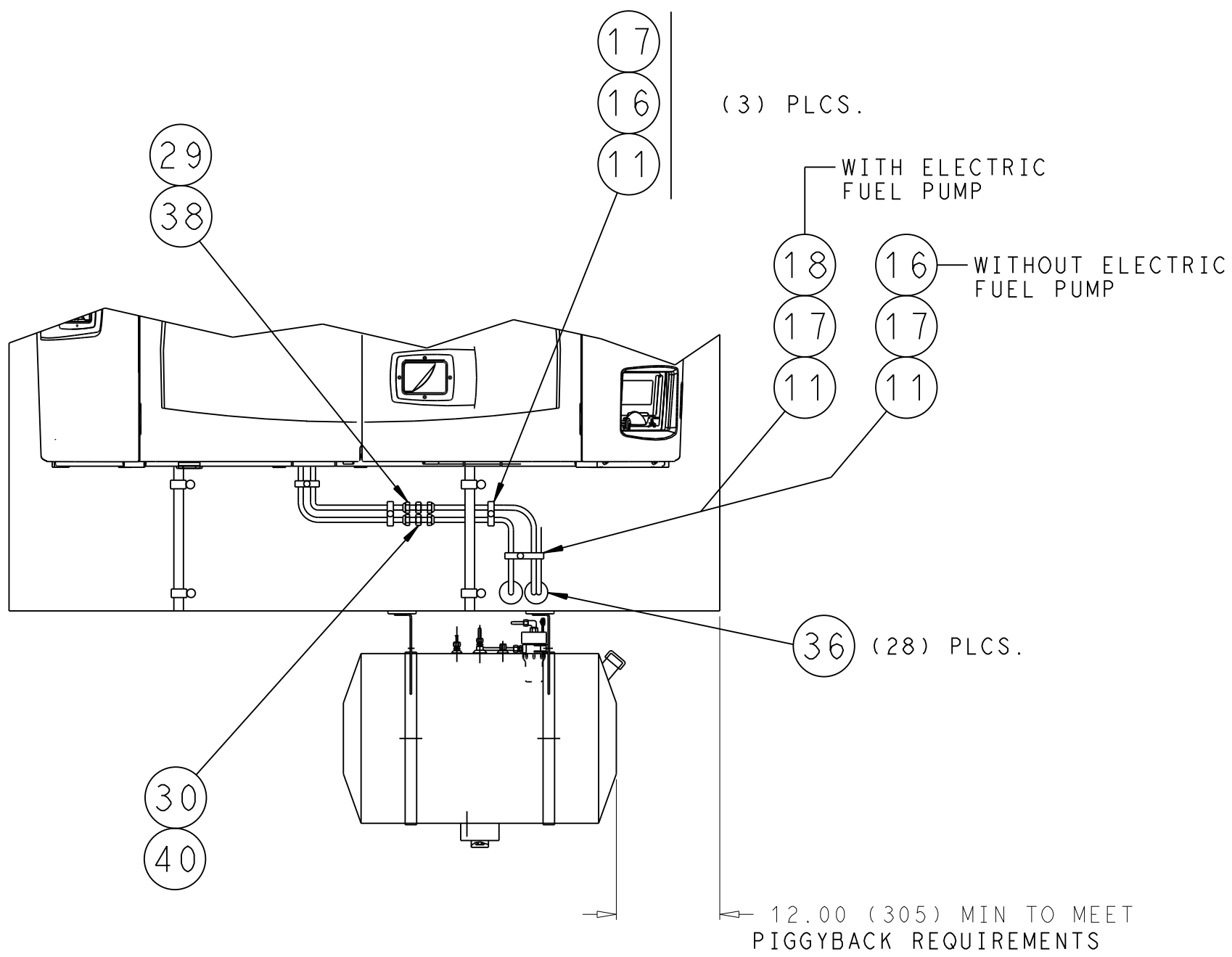
DRAWING CLASSIFICATION: US EAR99



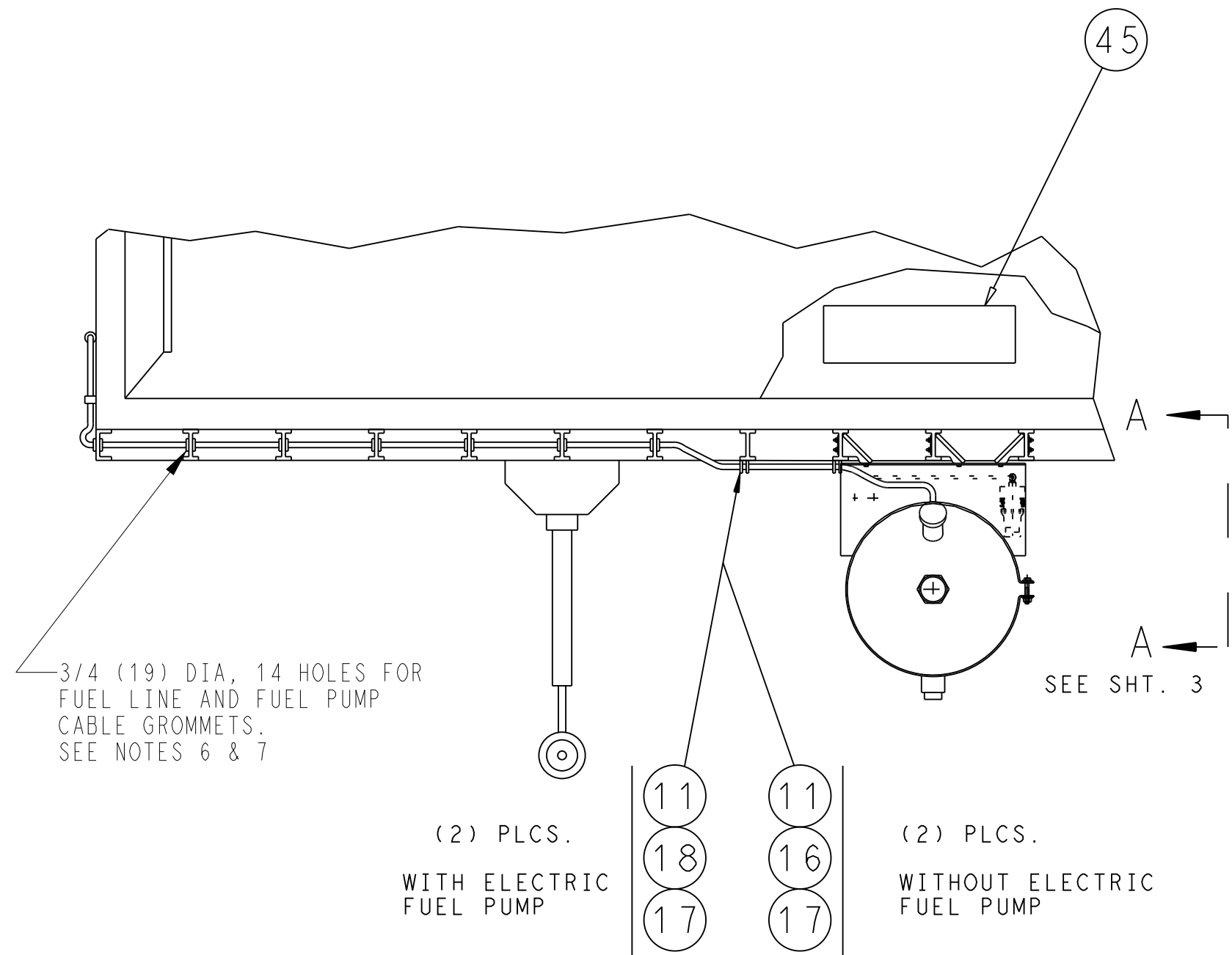
Carrier Transicold Division  
Carrier Corporation  
P.O. Box 4805  
Syracuse, New York 13221

THIS DOCUMENT AND THE INFORMATION CONTAINED THEREIN IS  
PROPRIETARY TO CARRIER CORPORATION AND SHALL NOT BE USED  
OR DISCLOSED TO OTHERS, IN WHOLE OR IN PART, WITHOUT THE  
WRITTEN AUTHORIZATION OF CARRIER CORPORATION.

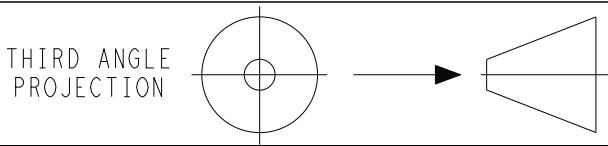
SUBMISSION OF THESE DRAWINGS OR DOCUMENTS  
DOES NOT CONSTITUTE PART PERFORMANCE OR  
ACCEPTANCE OF CONTRACT



TYPICAL TANK ARRANGEMENT



|     |  |           |     |       |      |            |
|-----|--|-----------|-----|-------|------|------------|
| E   | REDRAWN IN PRO/E. REMOVED FUSE LOCATIONS FOR NDA, NDB/S, &NDJ/F. | 21 MAR 13 | ZMG |       |      | 72N0229P13 |
| SYM | REVISION RECORD  | DATE      | BY  | ENGR. | M.E. | NPCA NO.   |



IMPERIAL INCH FORMAT:  
UNLESS OTHERWISE SPECIFIED  
DIMENSIONS ARE IN INCHES WITH  
METRIC CONVERSIONS IN [MILLIMETERS]

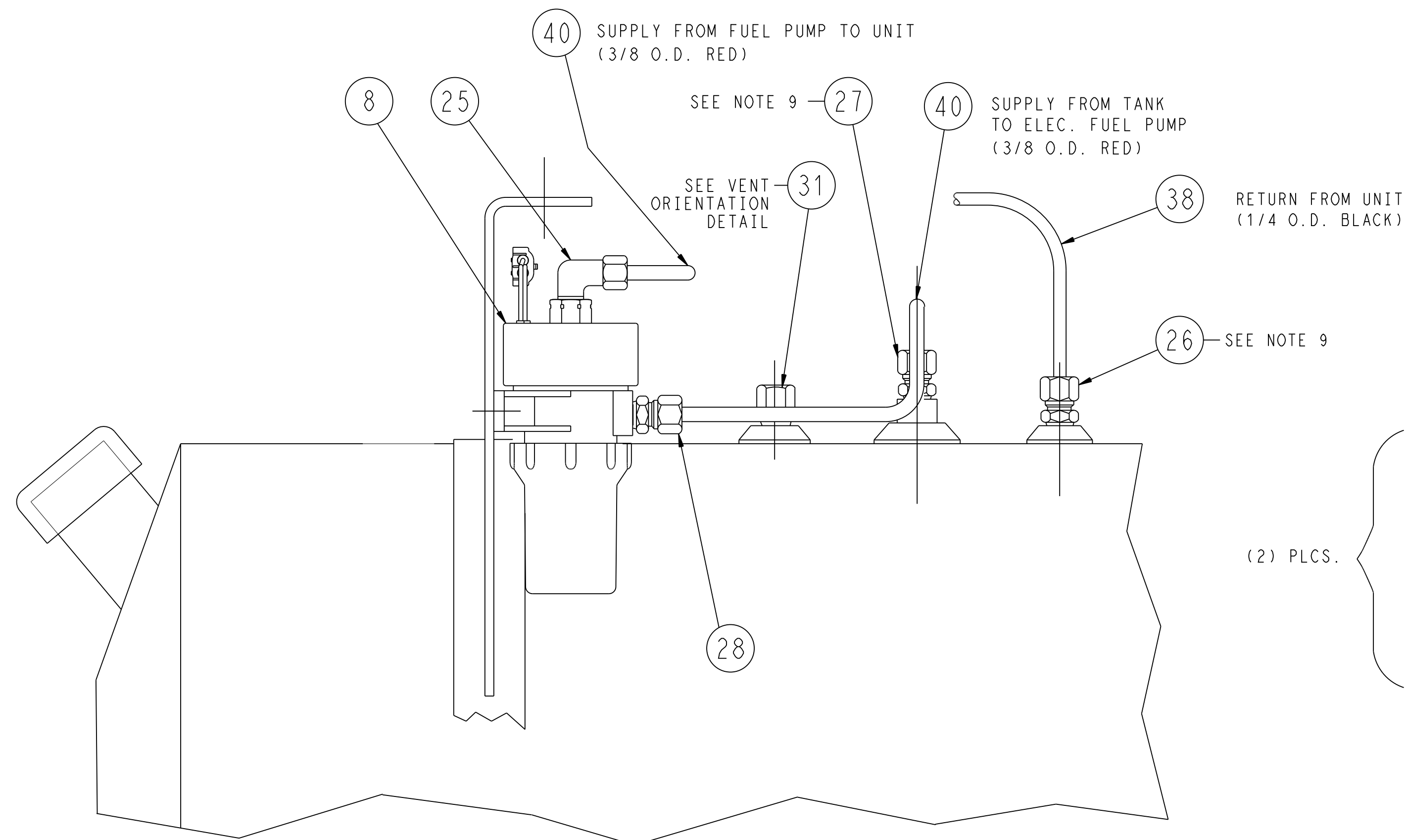
TITLE  
INSTALLATION INSTRUCTIONS  
18" DIA FUEL TANKS, 30 & 50 GALLONS

|             |     |
|-------------|-----|
| DRAWING NO. | REV |
| 98-02236    | E   |
| SHEET 2 OF  |     |

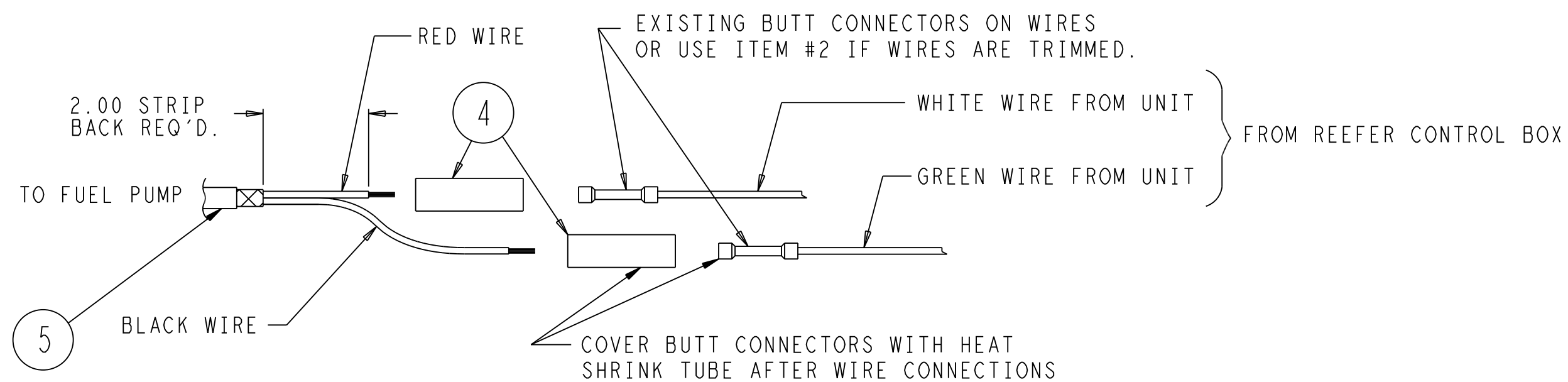
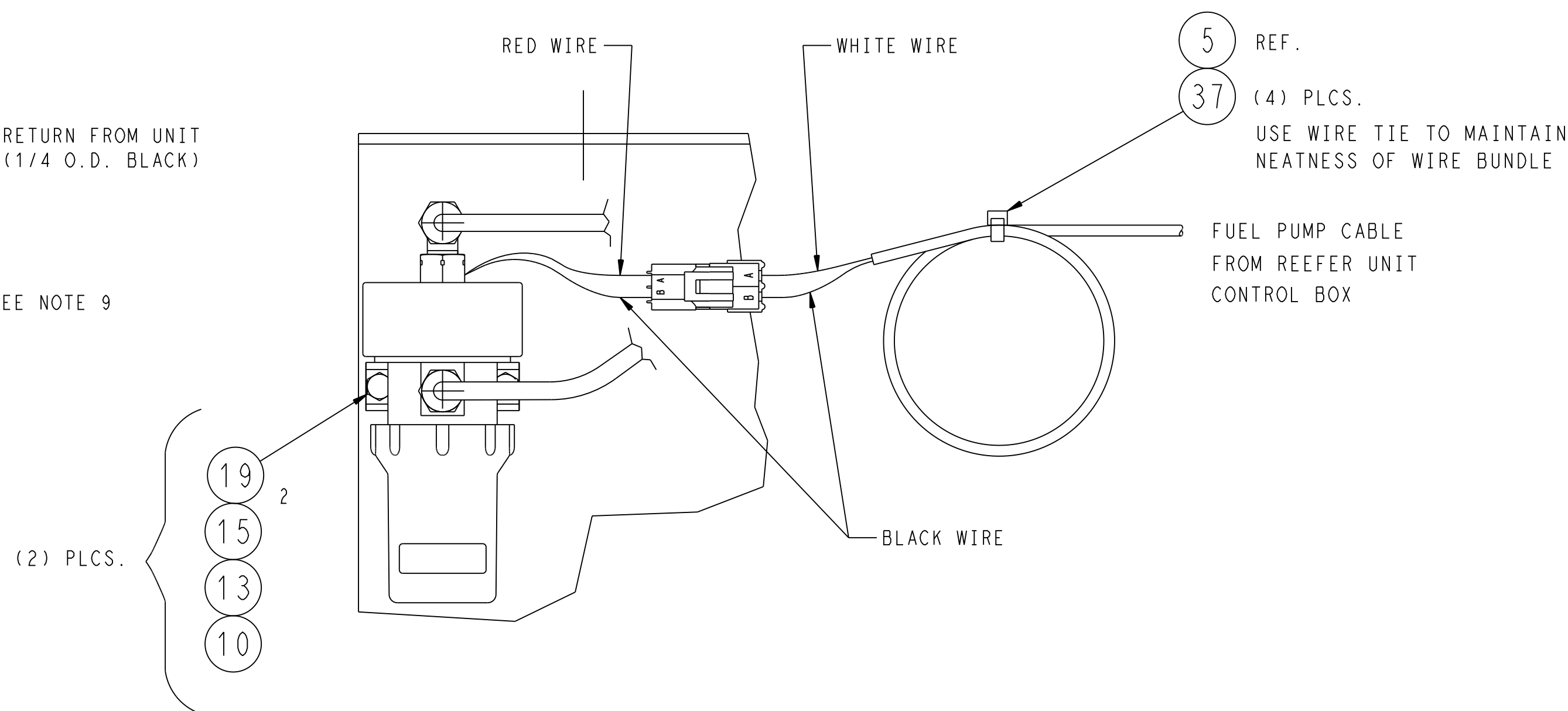
SUPERSEDES: \_\_\_\_\_

PART CLASSIFICATION: US SEE CHART

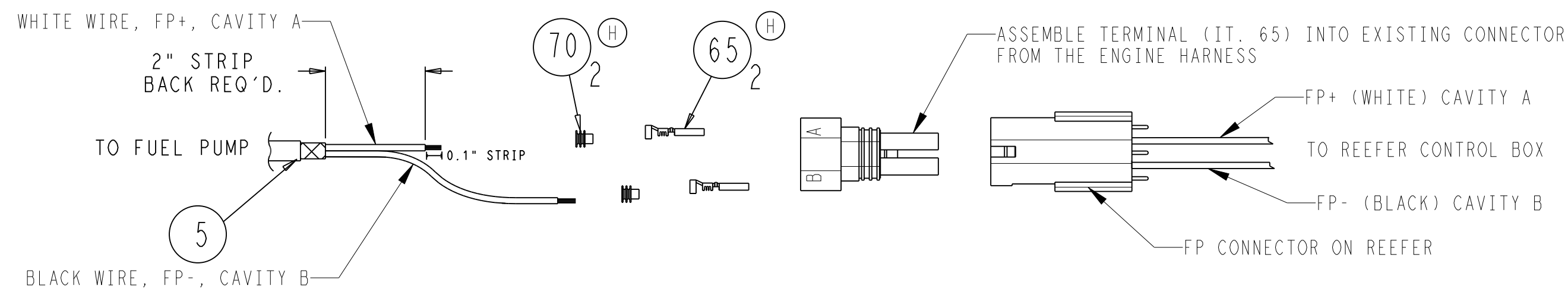
DRAWING CLASSIFICATION: US EAR99



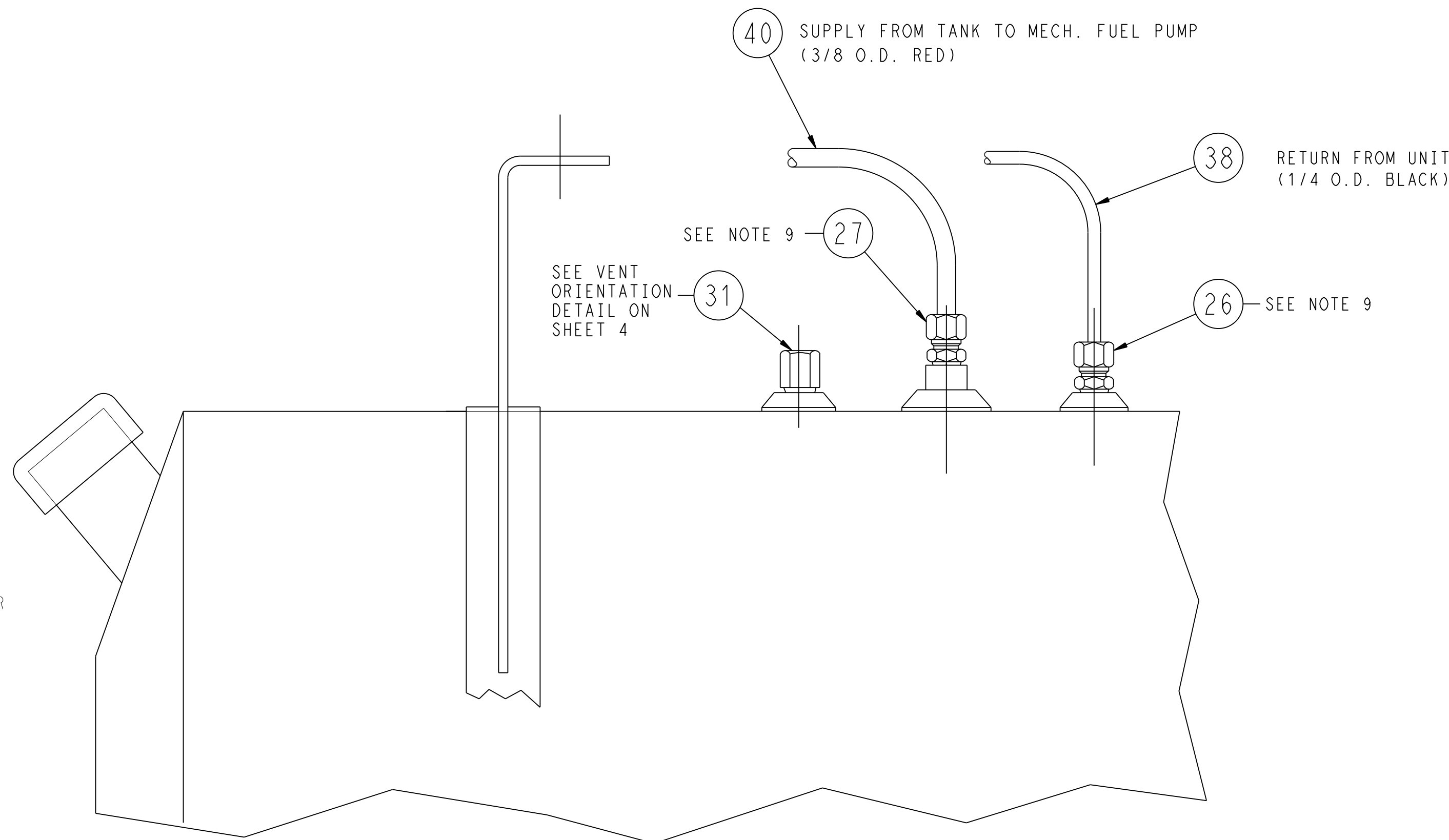
VIEW A - A (SHT 2)  
FOR KITS WITH ELECTRIC FUEL PUMP



Ⓜ FOR UNITS WITH ELECTRIC FUEL PUMP LOOSE WIRES  
AT REEFER UNIT CONTROL BOX



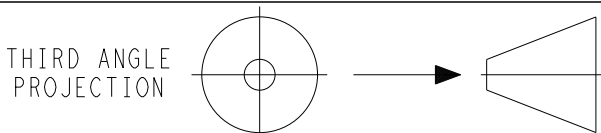
FOR UNITS WITH ELECTRIC FUEL PUMP CONNECTOR  
Ⓜ AT REEFER UNIT CONTROL BOX



VIEW A - A (SHT 2)

FOR KITS WITHOUT ELECTRIC FUEL PUMP

|     |  |             |       |       |      |            |
|-----|--|-------------|-------|-------|------|------------|
| H   | ADDED "FOR UNITS WITH ELECTRIC FUEL PUMP CONNECTOR AT REEFER UNIT CONTROL BOX" VIEW & ADDED IT. 65, 2 QTY & IT. 70, 2 QTY. UPDATED NOTE "FOR UNITS WITH ELECTRIC FUEL PUMP LOOSE WIRES AT REEFER UNIT CONTROL BOX" | 18 SEP 2019 | LT-SN | RC    |      | 72N0274P19 |
| F   | REMOVED REFERENCES TO 75, 100 & 120 GAL TANKS  | 9MAR2018    | KEJ   |       |      | 72N0205P18 |
| E   | REDRAWN IN PRO/E. PICTORIALLY UPDATED FUEL PUMP  | 20 MAR 13   | ZMG   |       |      | 72N0229P13 |
| SYM | REVISION RECORD  | DATE        | BY    | ENGR. | M.E. | NPCA NO.   |



IMPERIAL INCH FORMAT:  
UNLESS OTHERWISE SPECIFIED  
DIMENSIONS ARE IN INCHES WITH  
METRIC CONVERSIONS IN [MILLIMETERS]

TITLE  
INSTALLATION INSTRUCTIONS  
18" DIA FUEL TANKS, 30 & 50 GALLONS

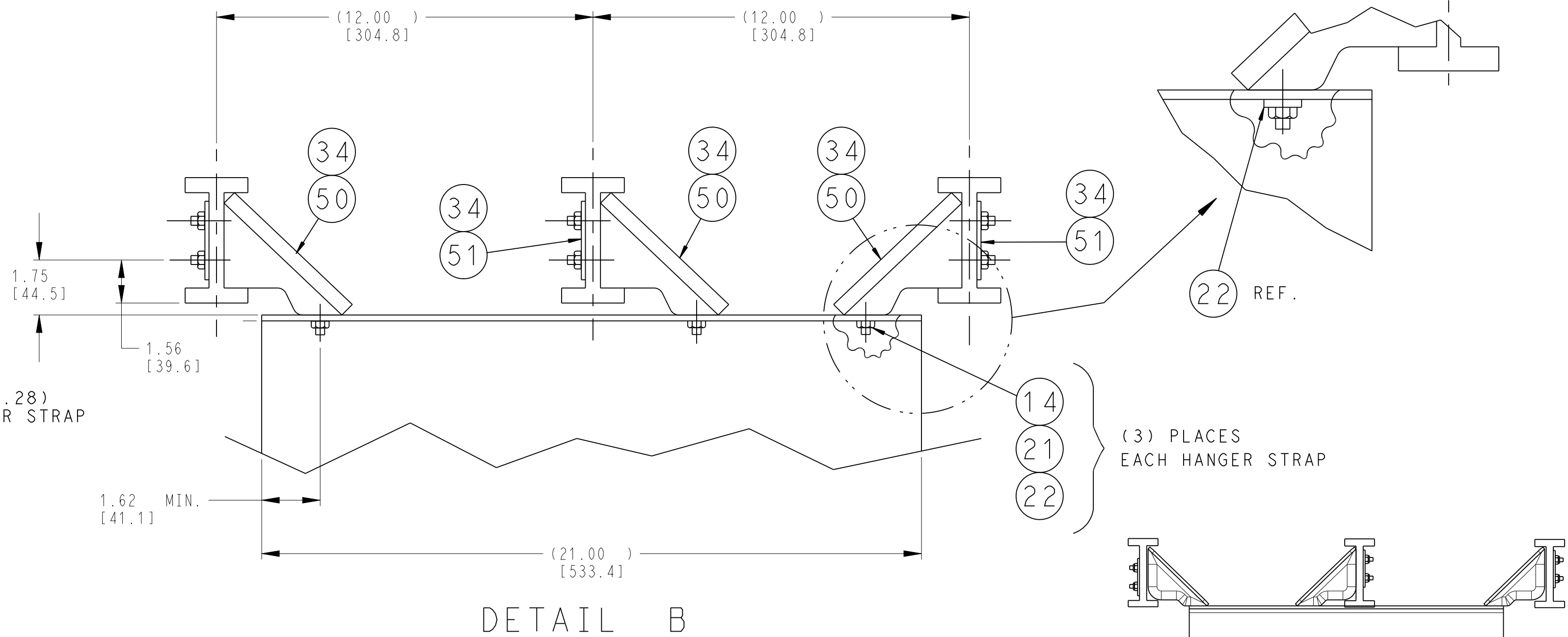
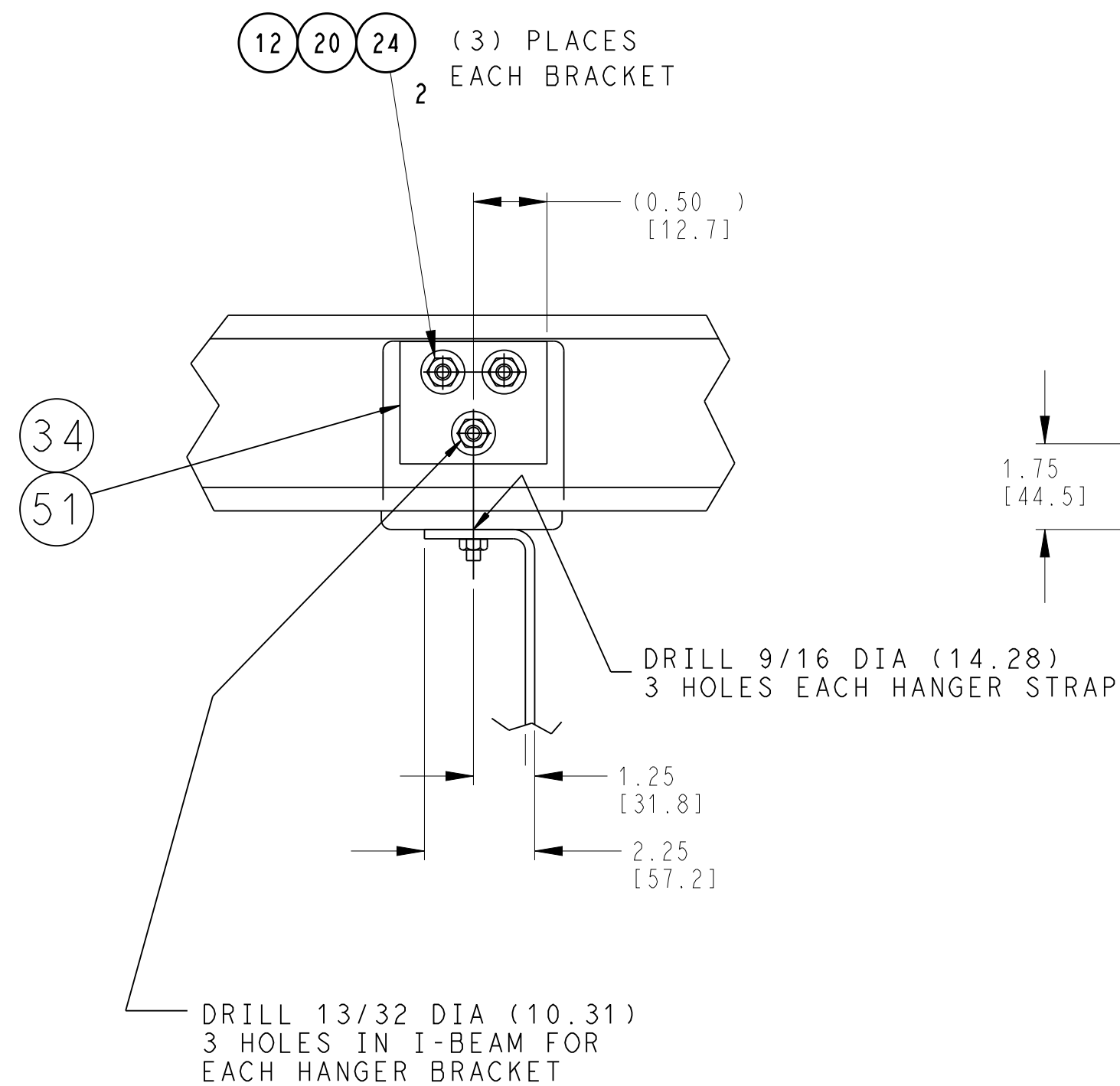
SUPERSEDES: \_\_\_\_\_

PART CLASSIFICATION: US SEE CHART

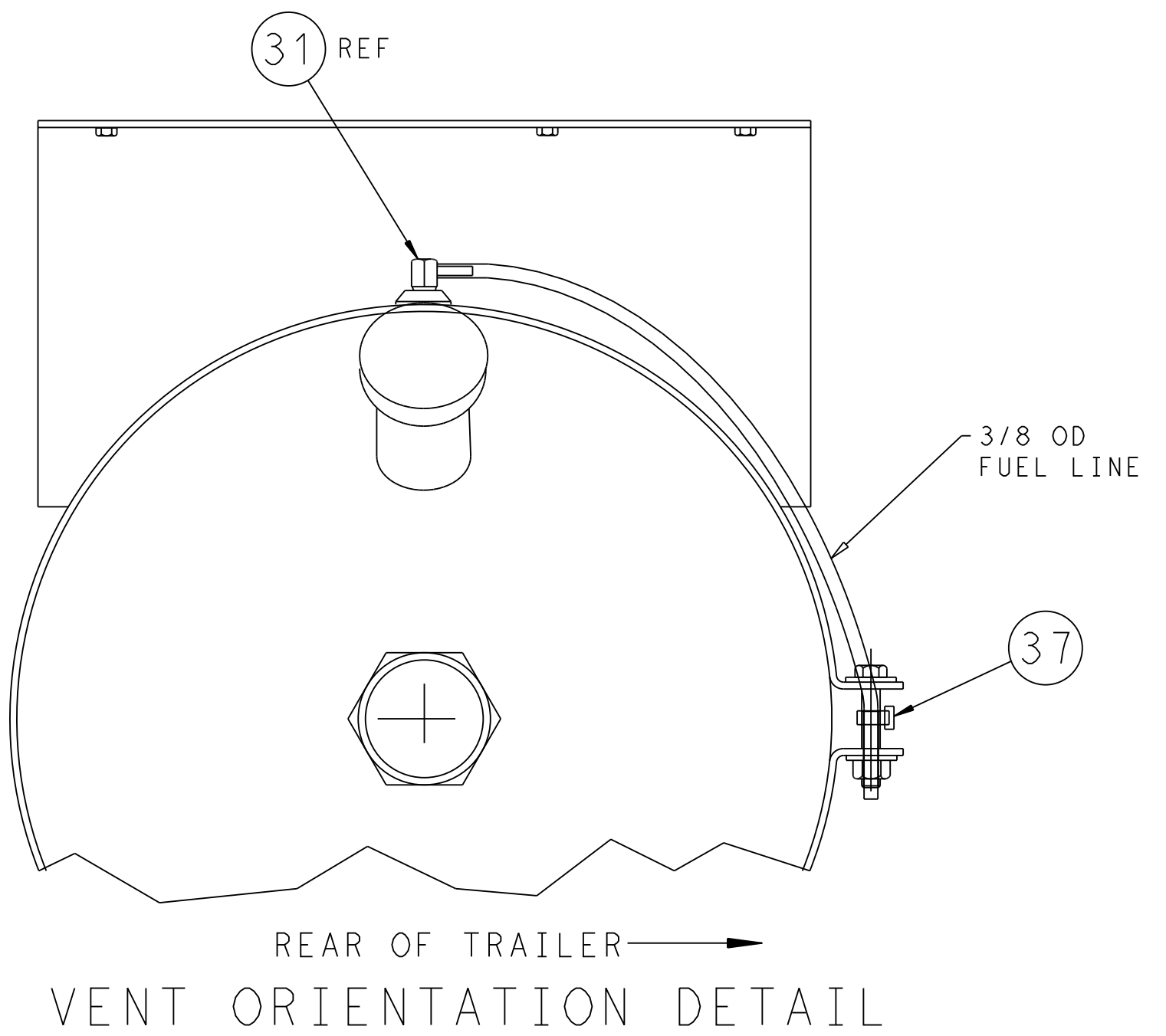
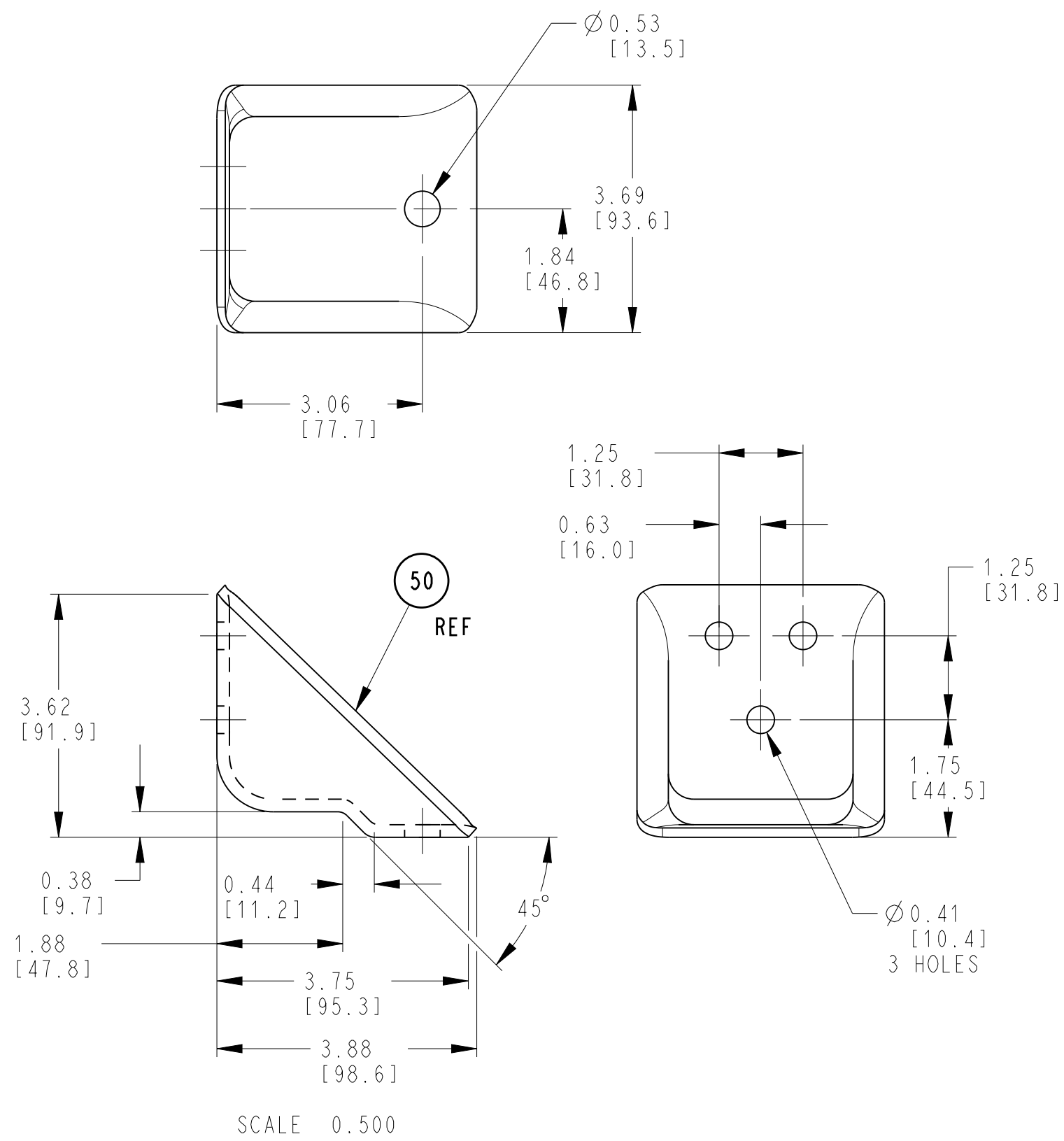
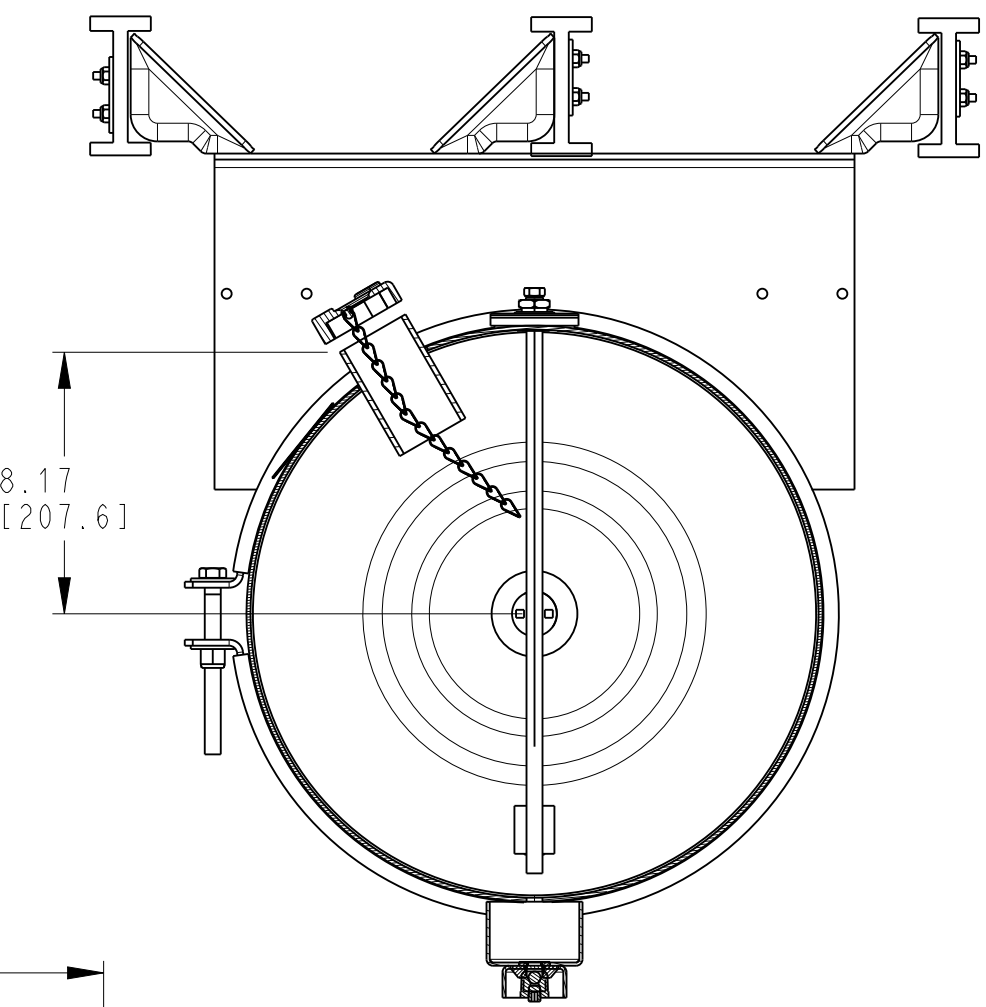
DRAWING NO.  
98-02236  
SHEET 3 OF

REV  
H

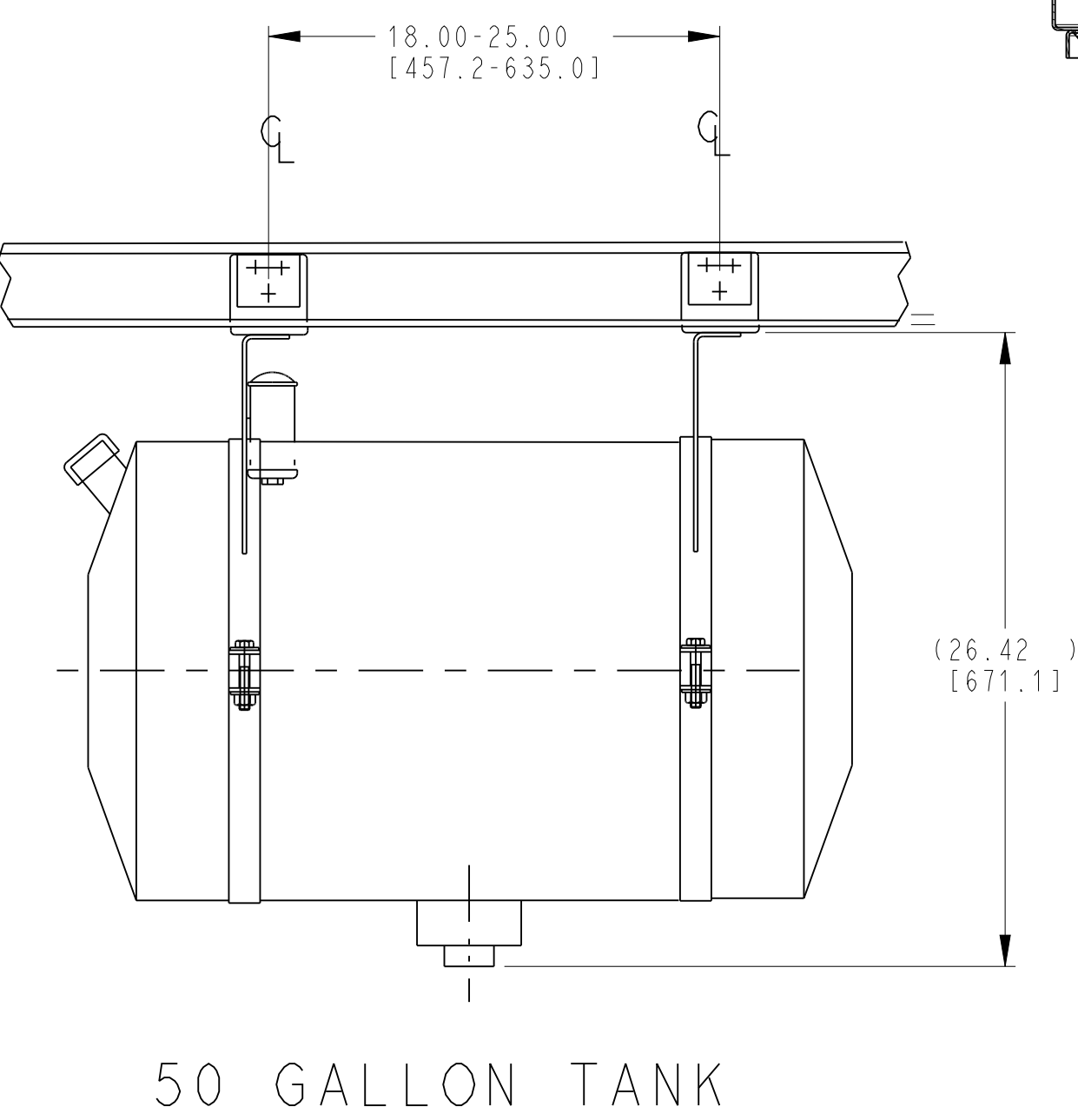
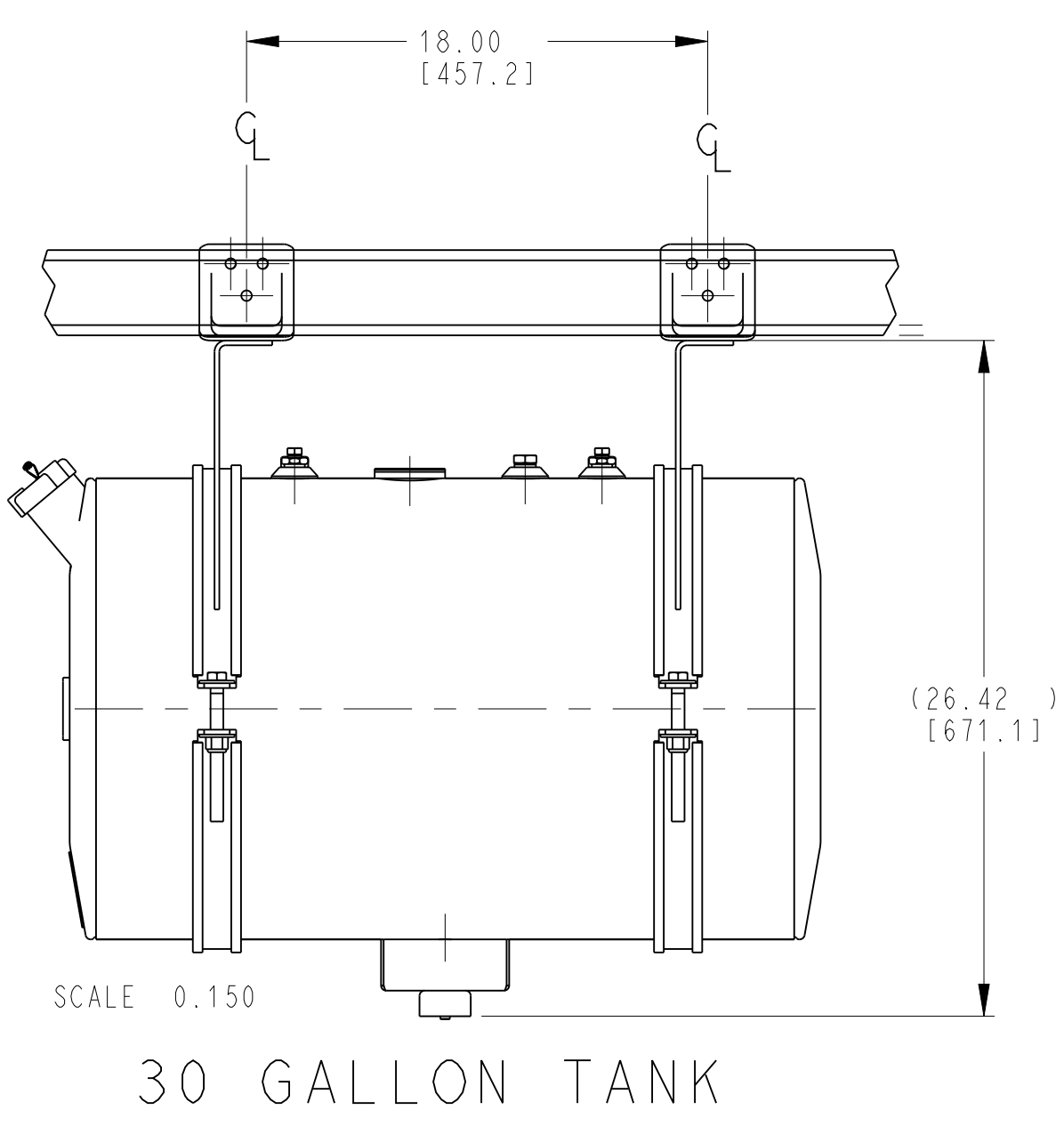
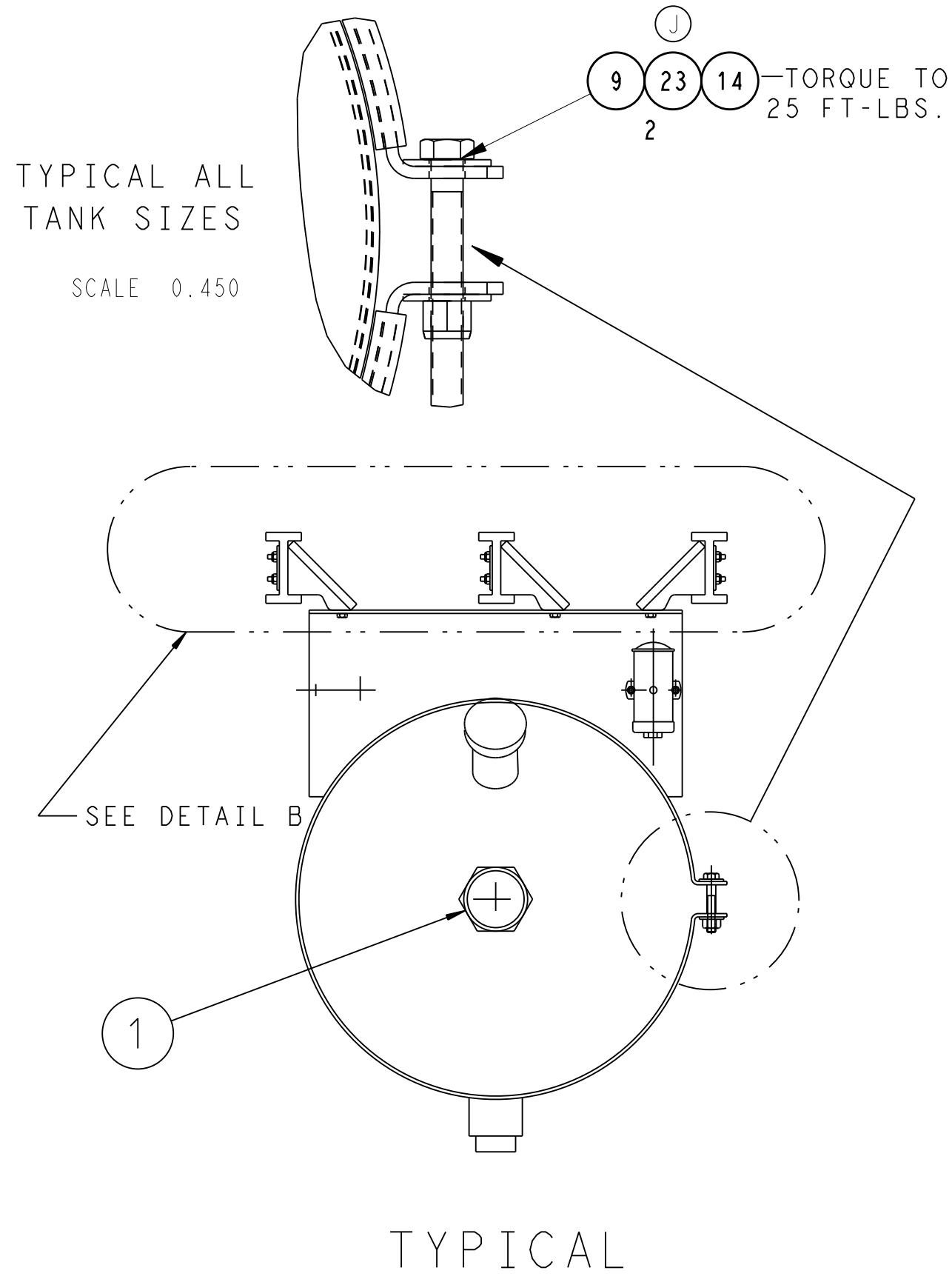
DRAWING CLASSIFICATION: US EAR99



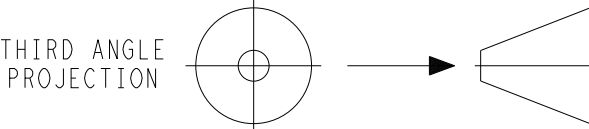
SIDE FILL  
DETAIL  
SHOWN WITH SUMP



ORIENT FUEL TANK VENT BARBED FITTING  
TO FACE TOWARD REAR TRAILER DOOR.  
CUT 18.00 INCHES OF 3/8 FUEL LINE AND  
INSTALL ONTO VENT THEN ROUTE TO TANK STRAP  
BOLT AND SECURE TO BOLT WITH WIRE TIE.



|     |  |             |       |       |      |            |
|-----|--|-------------|-------|-------|------|------------|
| J   | REPLACED IT. 23 & UPDATED TORQUE NOTE "25 FT-LBS" WAS "20 FT-LBS". | 10 FEB 2020 | LT-RP | JM    |      | 72N0333P19 |
| G   | ADDED SIDE FILL DETAIL 98-02236-04                                 | 5APR2018    | KEJ   |       |      | 72N0231P18 |
| F   | UPDATED 30 GALLON MODEL. DIM 18.00 WAS 14.00.                      | 8MAR2018    | KEJ   |       |      | 72N0205P18 |
| E   | REDRAWN IN PRO/E. ADDED CALLOUTS IT.34 (6 PLCS) AND IT.24.         | 20 MAR 13   | ZMG   |       |      | 72N0229P13 |
| SYM | REVISION RECORD  | DATE        | BY    | ENGR. | M.E. | NPCA NO.   |



IMPERIAL INCH FORMAT:  
UNLESS OTHERWISE SPECIFIED  
DIMENSIONS ARE IN INCHES WITH  
METRIC CONVERSIONS IN [MILLIMETERS]

TITLE  
INSTALLATION INSTRUCTIONS  
18" DIA FUEL TANKS, 30 & 50 GALLONS

DRAWING NO.  
98-02236  
SHEET 4 OF  
REV  
J

SUPERSEDES:

PART CLASSIFICATION: US SEE CHART

DRAWING CLASSIFICATION: US EAR99