



THIS DOCUMENT AND THE INFORMATION CONTAINED THEREIN IS PROPRIETARY TO CARRIER CORPORATION AND SHALL NOT BE USED OR DISCLOSED TO OTHERS, IN WHOLE OR IN PART, WITHOUT THE WRITTEN AUTHORIZATION OF CARRIER CORPORATION.

SUBMISSION OF THESE DRAWINGS OR DOCUMENTS  
DOES NOT CONSTITUTE PART PERFORMANCE OR  
ACCEPTANCE OF CONTRACT

DESCRIPTION	INSTALLATION DRAWING NO.	KIT NO.
FUEL TANKS (22" DIAMETER)	98-02201	76-00295-XX
LED LIGHT BAR INSTALLATION INSTRUCTIONS	98-03246	76-02000-00
DECAL KIT, ENGLISH - ARABIC	98-03333	76-02033-00
DECAL KIT, ENGLISH - CHINESE	98-03348	76-02033-03

- 1.0 COMPLETE INSTALLATION INCLUDES AND IS NOT LIMITED TO:
  - 1.1 UNIT INSTALLATION
    - 1.1.1 MOUNTING HOLE PLUG INSTALLATION
  - 1.2 BATTERY INSTALLATION, INCLUDING DRAIN HOSE
  - 1.3 COMPLETION OF PRE-DELIVERY INSPECTION (PDI) PER MODEL
    - 1.3.1 UNIT PREP AND INITIAL ADJUSTMENTS
    - 1.3.2 CHECKLIST
    - 1.3.3 UNIT RUN IN PER PDI CHECKLIST
    - 1.2.4 WARRANTY REGISTRATION CARD SUBMITTAL
    - 1.3.5 PERFORM MICRO DATA DOWNLOAD
  - 1.4 DEFROST LINE ROUTING AND CLAMPING
  - 1.5 FUEL LINE CONNECTIONS TO UNIT
- 2.0 THE TRAILER OR BOXCAR STRUCTURE MUST BE EVALUATED BY THE TRAILER OR BOXCAR MANUFACTURER TO DETERMINE ITS ABILITY TO WITHSTAND THE LOADS IMPOSED BY THE UNIT OVER ITS SERVICE LIFE. CARRIER TRANSICOLD DOES NOT CONVEY ANY ENDORSEMENT OR WARRANTY FOR THE TRAILER'S OR BOXCAR'S STRUCTURAL INTEGRITY.  
WEIGHTS:
  - X4 7300 REEFER UNIT (W/FLUIDS, LESS BATTERY): 1610 LBS
  - X4 7500 REEFER UNIT (W/FLUIDS, LESS BATTERY): 1620 LBS
  - X4 7300 REEFER UNIT W/EES (W/FLUIDS, LESS BATTERY): 1655 LBS
  - X4 7500 REEFER UNIT W/EES (W/FLUIDS, LESS BATTERY): 1665 LBS
  - BATTERY (TYPICAL): 80 LBS (MAX)
- 3.0 UNIT MOUNTING SURFACES OF THE TRAILER OR BOXCAR THAT CONTACT THE UNIT MOUNTING PADS MUST BE UNI-PLANAR TO WITHIN 0.13 [3] TO PREVENT DISTORTION OF THE UNIT AND/OR TRAILER.
  - 3.1 MOUNTING STUDS MUST NOT PROTRUDE MORE THAN 3.0 INCHES FROM THE TRAILER OR BOXCAR SURFACE FOR PROPER INSTALLATION OF THE MOUNTING HOLE PLUGS.
- 4.0 TRAILER OR BOXCAR SURFACES THAT CONTACT THE UNIT MOUNTING GASKET SHOULD NOT PROTRUDE MORE THAN 0.19 [5] ABOVE THE PLANE DEFINED BY THE MOUNTING PAD SURFACES TO ENSURE PROPER AIR SEAL.
- 5.0 ALL DIMENSIONS SHOWN ARE IN INCHES, WITH THE METRIC CONVERSIONS IN [MILLIMETERS].
- 6.0 PRE-DELIVERY INSPECTION AND WARRANTY REGISTRATION DOCUMENTS ARE SHIPPED WITH UNIT AND ARE LOCATED IN THE SIDE DOOR POCKET WITH UNIT MANUAL AND SCHEMATIC.

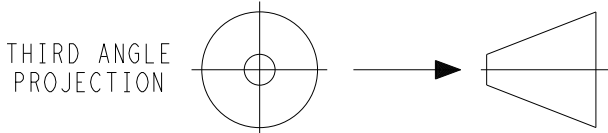
KIT PART NO.	PART. NO.	MODEL DESCRIPTION
76-02066	98-02586	X4 7300/7500 DOMESTIC, RAIL EDITION, EXPORT

CONTENTS	SHEET
GENERAL INFORMATION	1
SWING RADIUS	2
UNIT DIMENSIONAL DATA	2
EVAP. BACK PANEL: TRAILER OR RAIL	3
TRAILER OR BOXCAR PREPARATION	4
UNIT INSTALLATION	5
UNIT LIFTING LOCATION	5
BATTERY INSTALLATION	6
CHUTE DIMENSIONAL INFORMATION	7
BOTTOM PANEL INSTALLATION	8

H	UPDATED SHEET INDEX. SEE SHEET 5.	02 MAY 2025	ZMG	NB		ECN1195346
G	UPDATED SHEET INDEX. SEE SHEETS 3, 4 & 5. ADDED NOTES 1.1 & 3.1.	27 OCT 2022	ZMG	HW		ECN1161283
F	UPDATED SHEET INDEX, SEE SHEET 5.	14 AUG 2019	LT-SK	RC		72N0242P19
E	UPDATED SHEET INDEX. ADDED NOTE 6.0, DECAL KIT CHINESE - ENGLISH AND INSTALLATION KIT P/N TO CHARTS. SEE SHTS.5 & 8.	30 MAR 2017	ZMG			72N0217P17
D	ADDED DECAL KIT, ENGLISH - ARABIC TO CROSS REF. INDEX. ADDED SHEET 8. SEE SHEET 6.	21 FEB 2014	ZMG			72N0222P14
SYM	REVISION RECORD	DATE	BY	ENGR.	M.E.	NPCA NO.

SHEET INDEX	REV	H	A	G	G	H	D	A	E
	SHEET	1	2	3	4	5	6	7	8

SEE SEPARATE PARTS LIST



IMPERIAL INCH FORMAT:  
UNLESS OTHERWISE SPECIFIED  
DIMENSIONS ARE IN INCHES WITH  
METRIC CONVERSIONS IN [MILLIMETERS]

TITLE

INSTALLATION INSTRUCTIONS  
X4 7300/7500 TRAILER & RAIL

DRAWING NO. 98-02586  
SHEET 1 OF 8

SUPERSEDES:

PART CLASSIFICATION: US EAR99

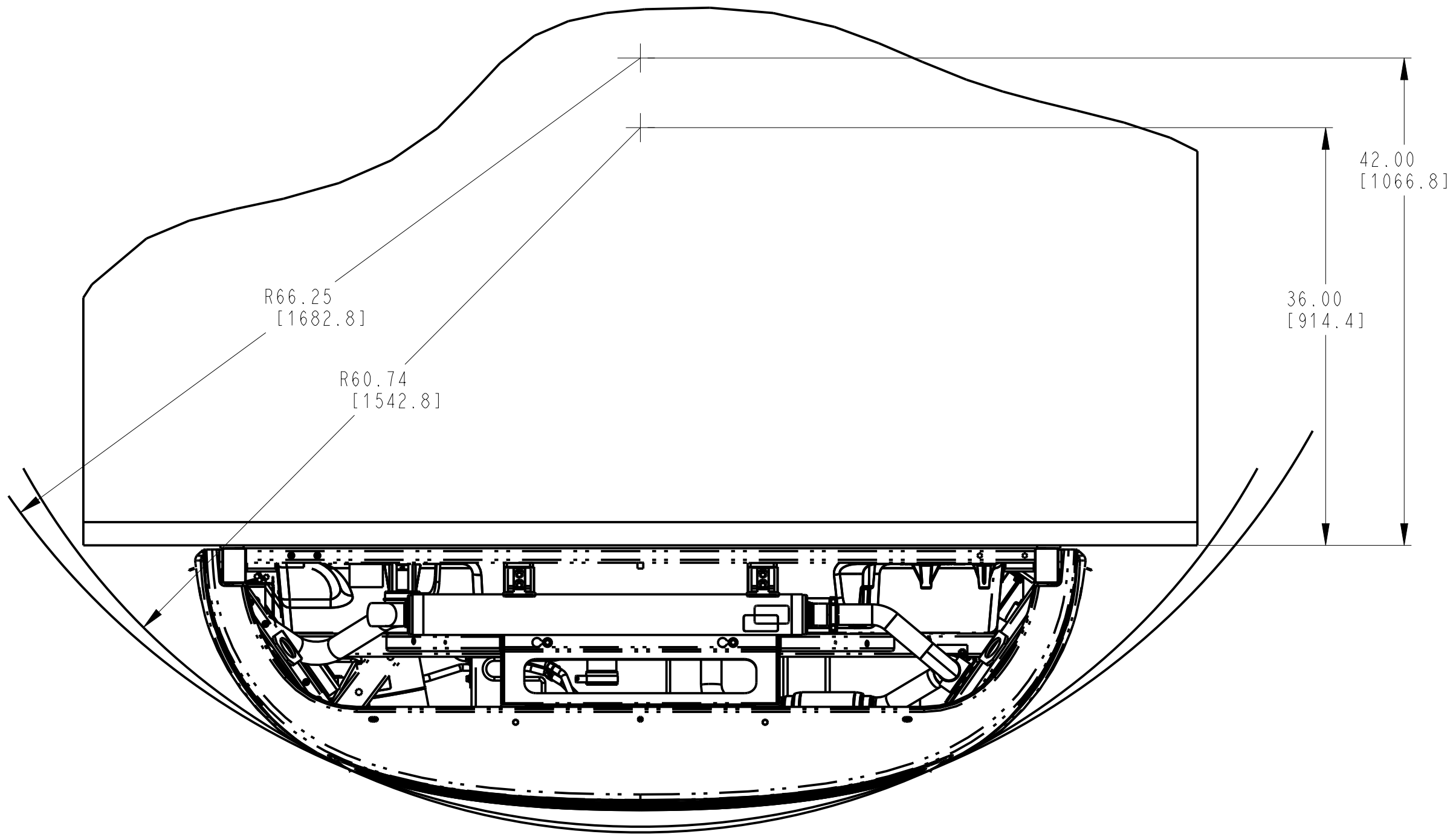
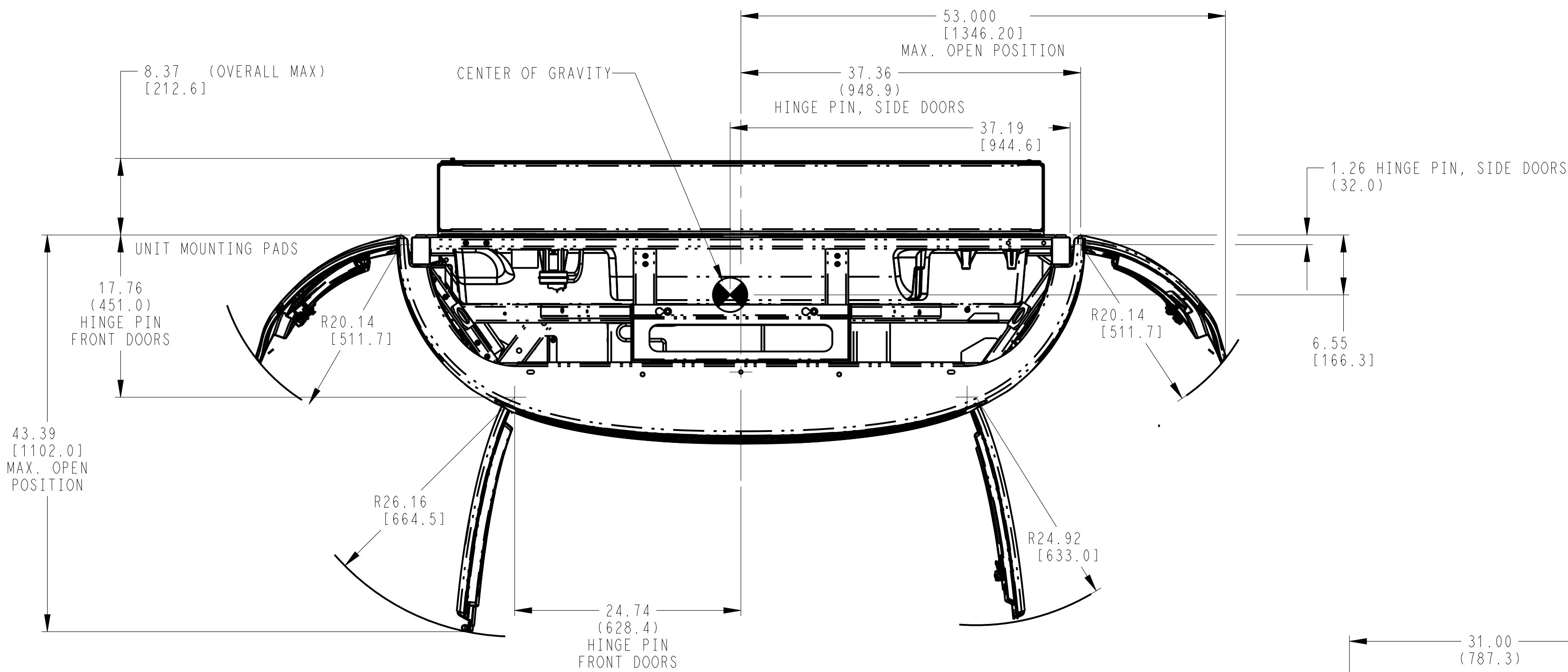
DRAWING CLASSIFICATION: US EAR99



Carrier Transicold Division  
Carrier Corporation  
P.O. Box 4805  
Syracuse, New York 13221

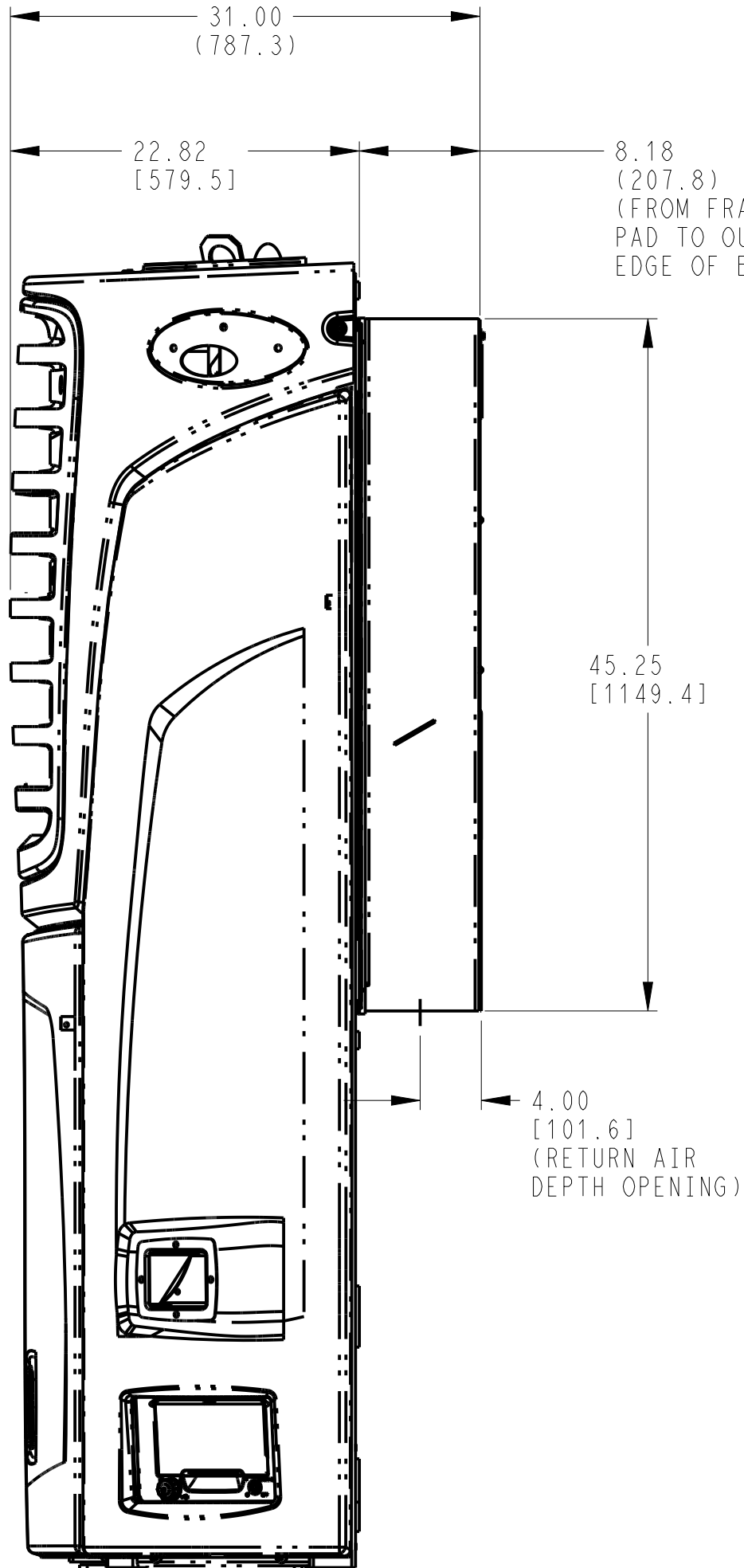
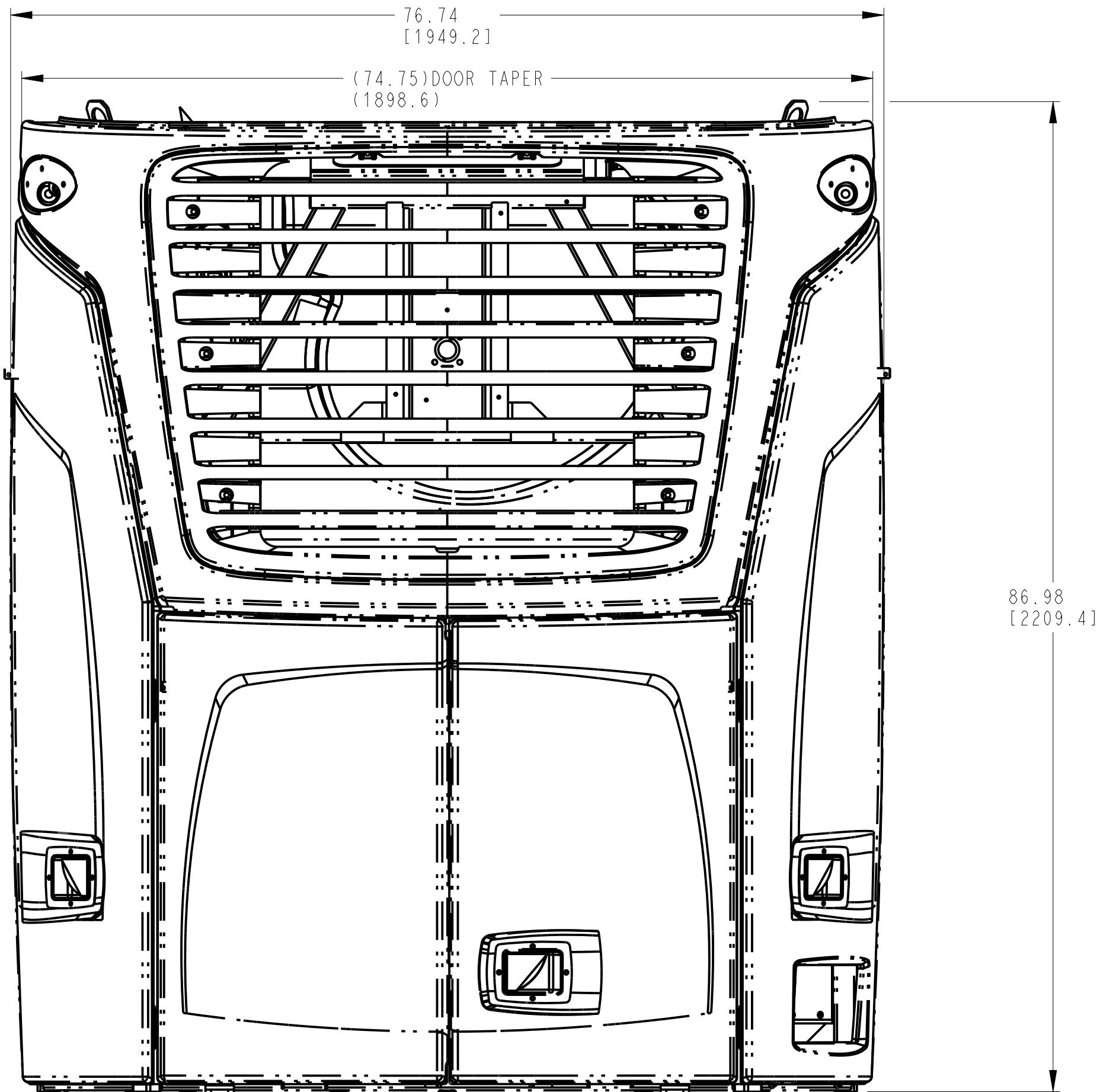
THIS DOCUMENT AND THE INFORMATION CONTAINED THEREIN IS  
PROPRIETARY TO CARRIER CORPORATION AND SHALL NOT BE USED  
OR DISCLOSED TO OTHERS, IN WHOLE OR IN PART, WITHOUT THE  
WRITTEN AUTHORIZATION OF CARRIER CORPORATION.

SUBMISSION OF THESE DRAWINGS OR DOCUMENTS  
DOES NOT CONSTITUTE PART PERFORMANCE OR  
ACCEPTANCE OF CONTRACT



## SWING RADIUS

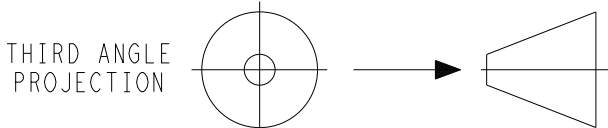
ALL UNIT VERSIONS



## UNIT DIMENSION INFORMATION

ALL UNIT VERSIONS

A	TITLE BLOCK: "X4 7300/7500TRAILER & RAIL" WAS "NDW TRAILER & RAIL; NDW136, NDW 236	06 MAR 2013	LT-NM			72N0034P13
-	INITIAL RELEASE	21MAR2012	KFV			72N0062P12
SYM	REVISION RECORD	DATE	BY	ENGR.	M.E.	NPCA NO.



IMPERIAL INCH FORMAT:  
UNLESS OTHERWISE SPECIFIED  
DIMENSIONS ARE IN INCHES WITH  
METRIC CONVERSIONS IN [MILLIMETERS]

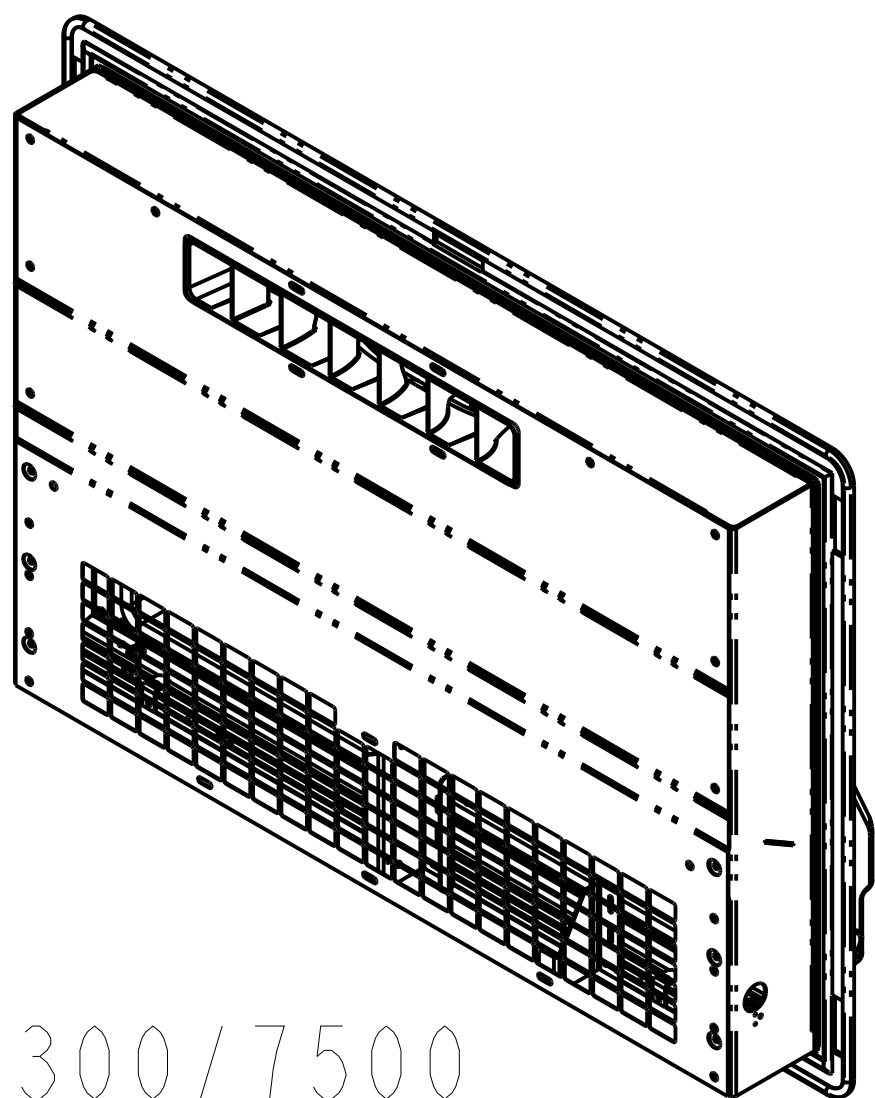
TITLE  
INSTALLATION INSTRUCTIONS  
X4 7300/7500 TRAILER & RAIL

DRAWING NO.	REV
98-02586	A
SHEET 2 OF	

SUPERSEDES: \_\_\_\_\_

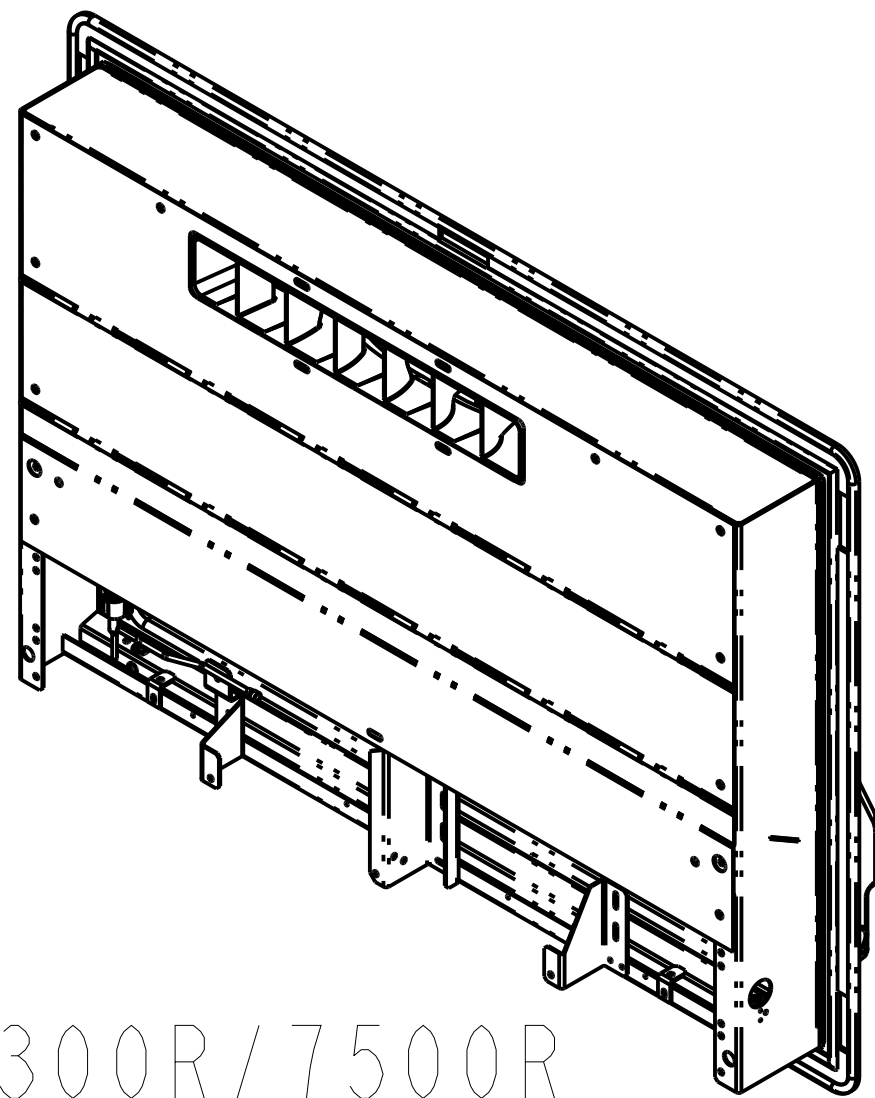
PART CLASSIFICATION: US EAR99

DRAWING CLASSIFICATION: US EAR99



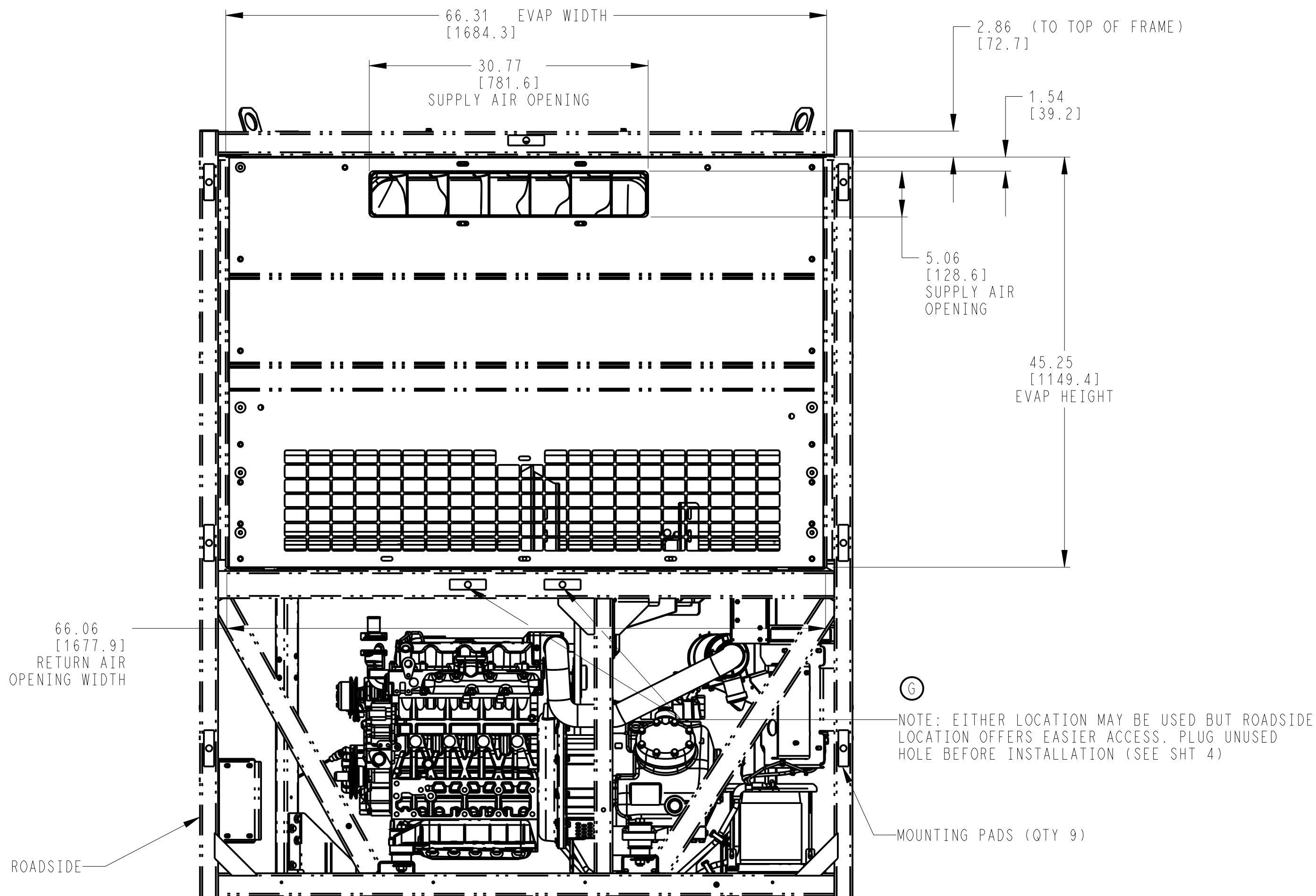
X4 7300/7500

SCALE 0.080

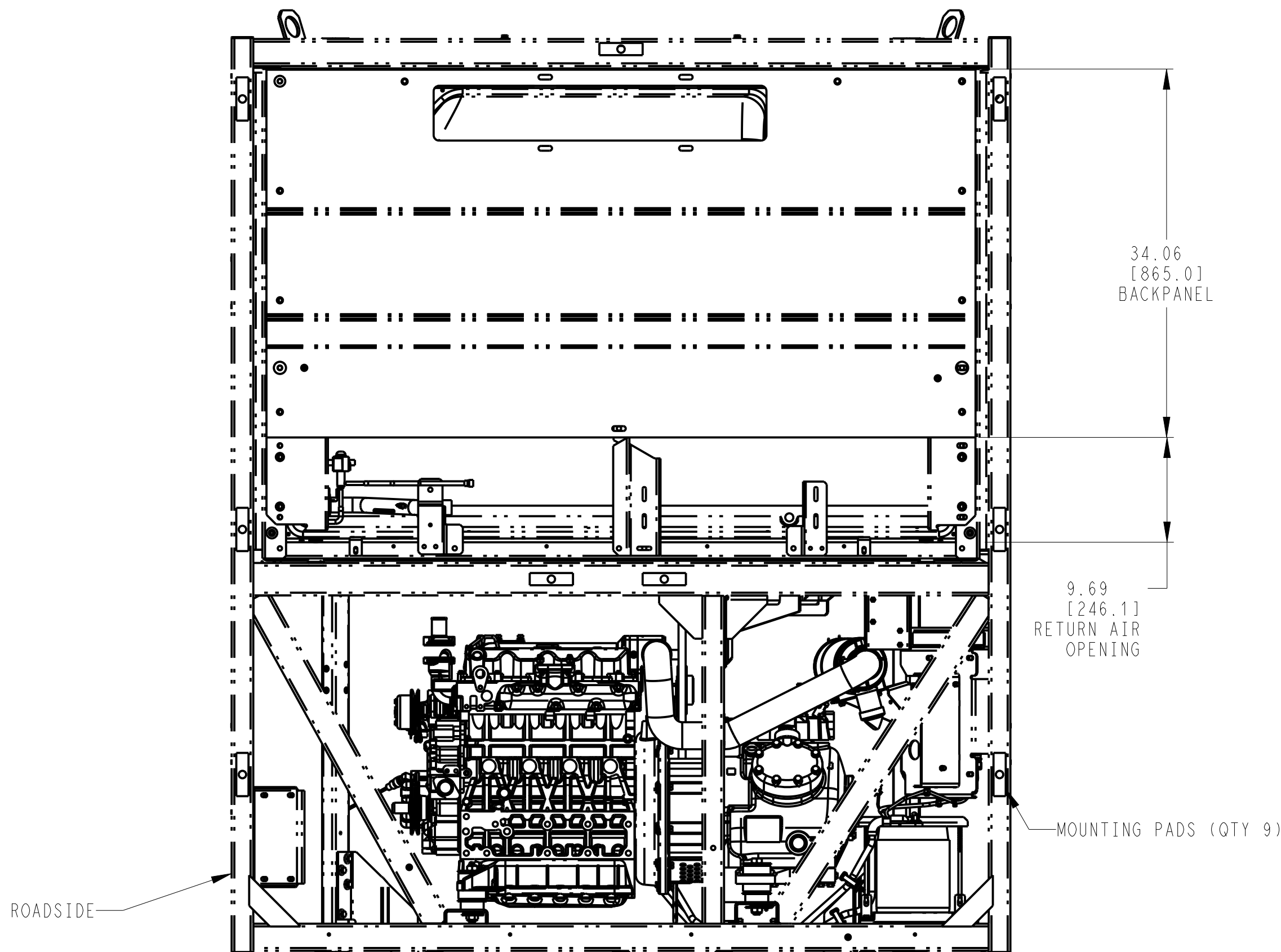


X4 7300R/7500R

SCALE 0.080

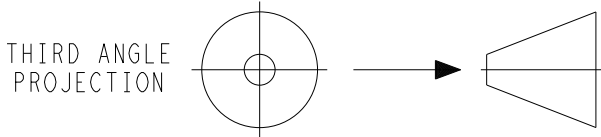


THIS REAR VIEW FOR X4 7300/7500 ONLY



THIS REAR VIEW FOR X4 7300R/7500R ONLY

G	REVISED NOTE TO PLUG UNUSED HOLE BEFORE INSTALLATION, WAS PLUG UNUSED HOLE AFTER INSTALLATION.	27 OCT 2022	ZMG	HW		ECN1161283
A	NOTE "THIS...X4 7300/7500 ONLY" WAS "THIS...STD. EDITION ONLY", "THIS...X4 7300R/7500R ONLY" WAS "THIS...RAIL EDITION ONLY", "X4 7300/7500" WAS "NDW1336 / NDW236", "X4 7300R/7500R" WAS "NDW1336 / NDW236". TITLE BLOCK: "X4 7300/7500 TRAILER & RAIL" WAS "NDW TRAILER & RAIL; NDW136, NDW 236"	06 MAR 2013	LT-NM			72N0034P13
-	INITIAL RELEASE	21MAR2012	KFV			72N0062P12
SYM	REVISION RECORD	DATE	BY	ENGR.	M.E.	NPCA NO.



IMPERIAL INCH FORMAT:  
UNLESS OTHERWISE SPECIFIED  
DIMENSIONS ARE IN INCHES WITH  
METRIC CONVERSIONS IN [MILLIMETERS]

TITLE  
INSTALLATION INSTRUCTIONS  
X4 7300/7500 TRAILER & RAIL

DRAWING NO.  
98-02586  
SHEET 3 OF 3  
REV  
G

SUPERSEDES:

PART CLASSIFICATION: US EAR99

DRAWING CLASSIFICATION: US EAR99



Carrier Transicold Division  
Carrier Corporation  
P.O. Box 4805  
Syracuse, New York 13221

THIS DOCUMENT AND THE INFORMATION CONTAINED THEREIN IS  
PROPRIETARY TO CARRIER CORPORATION AND SHALL NOT BE USED  
OR DISCLOSED TO OTHERS, IN WHOLE OR IN PART, WITHOUT THE  
WRITTEN AUTHORIZATION OF CARRIER CORPORATION.

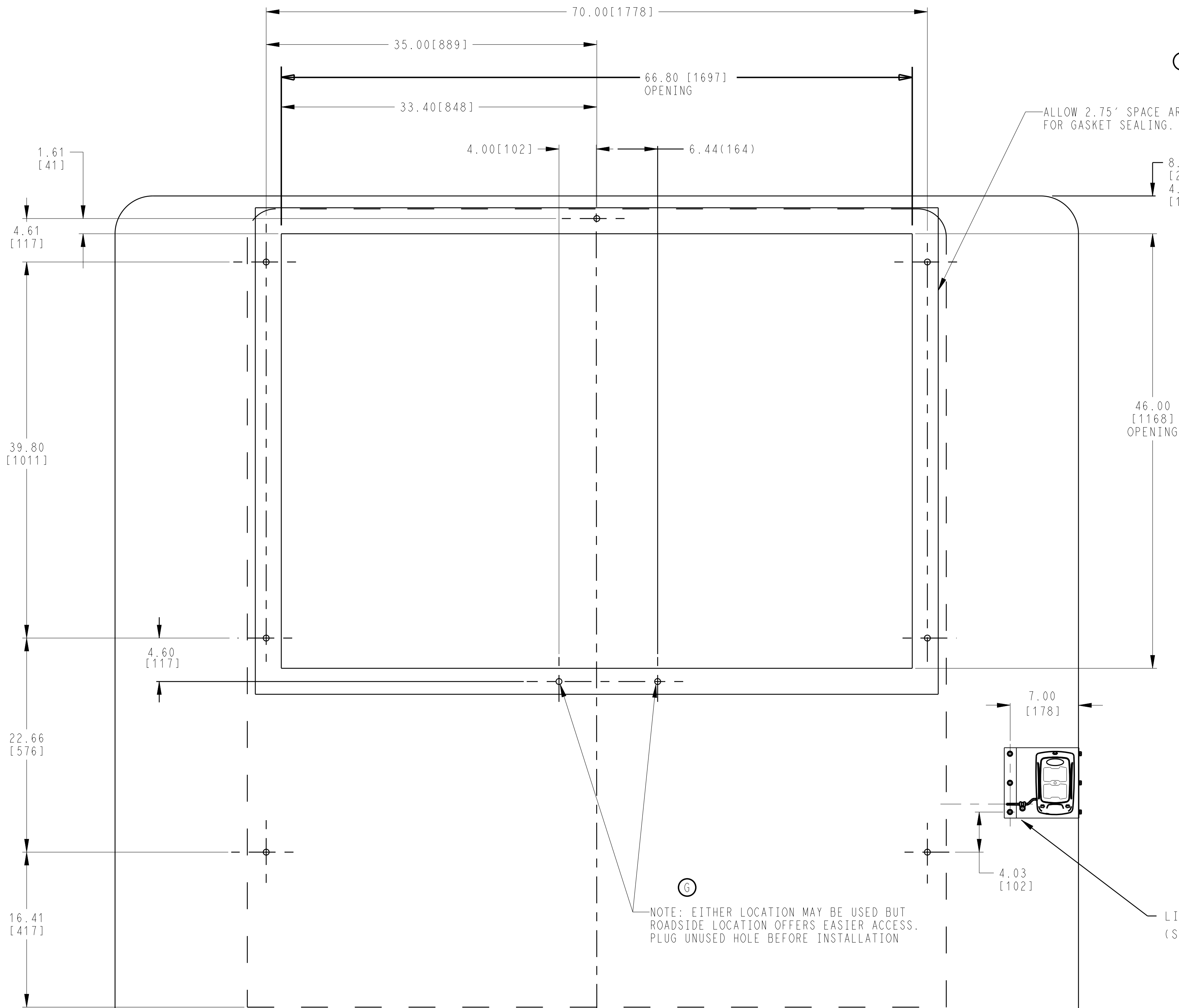
SUBMISSION OF THESE DRAWINGS OR DOCUMENTS  
DOES NOT CONSTITUTE PART PERFORMANCE OR  
ACCEPTANCE OF CONTRACT

# TRAILER OR BOXCAR BODY PREPARATION

CAUTION: UNIT MOUNTING SURFACES OF TRAILER OR BOXCAR THAT CONTACT THE UNIT MOUNTING PADS MUST BE UNI-PLANAR TO WITHIN 0.13[3] TO PREVENT DISTORTION OF UNIT AND/OR TRAILER/BOXCAR.

CAUTION: TRAILER OR BOXCAR SURFACES THAT CONTACT THE UNIT MOUNTING GASKET SHOULD NOT PROTRUDE MORE THAN 0.19[5] ABOVE THE PLANE DEFINED BY THE MOUNTING PAD SURFACES TO ENSURE PROPER AIR SEAL.

NOTE: MOUNTING STUD NOT TO EXCEED 3.00 INCHES FROM THE TRAILER OR BOXCAR BODY FOR PROPER INSTALLATION OF MOUNTING HOLE PLUGS.



ALLOW 2.75' SPACE AROUND TRAILER OPENING FOR GASKET SEALING. (SEE CAUTION NOTES)

8.00 MAX [203]  
4.00 MIN [102]

5.00 MAX. / 1.00 MIN. [127] / [25]

46.00 [1168]  
OPENING

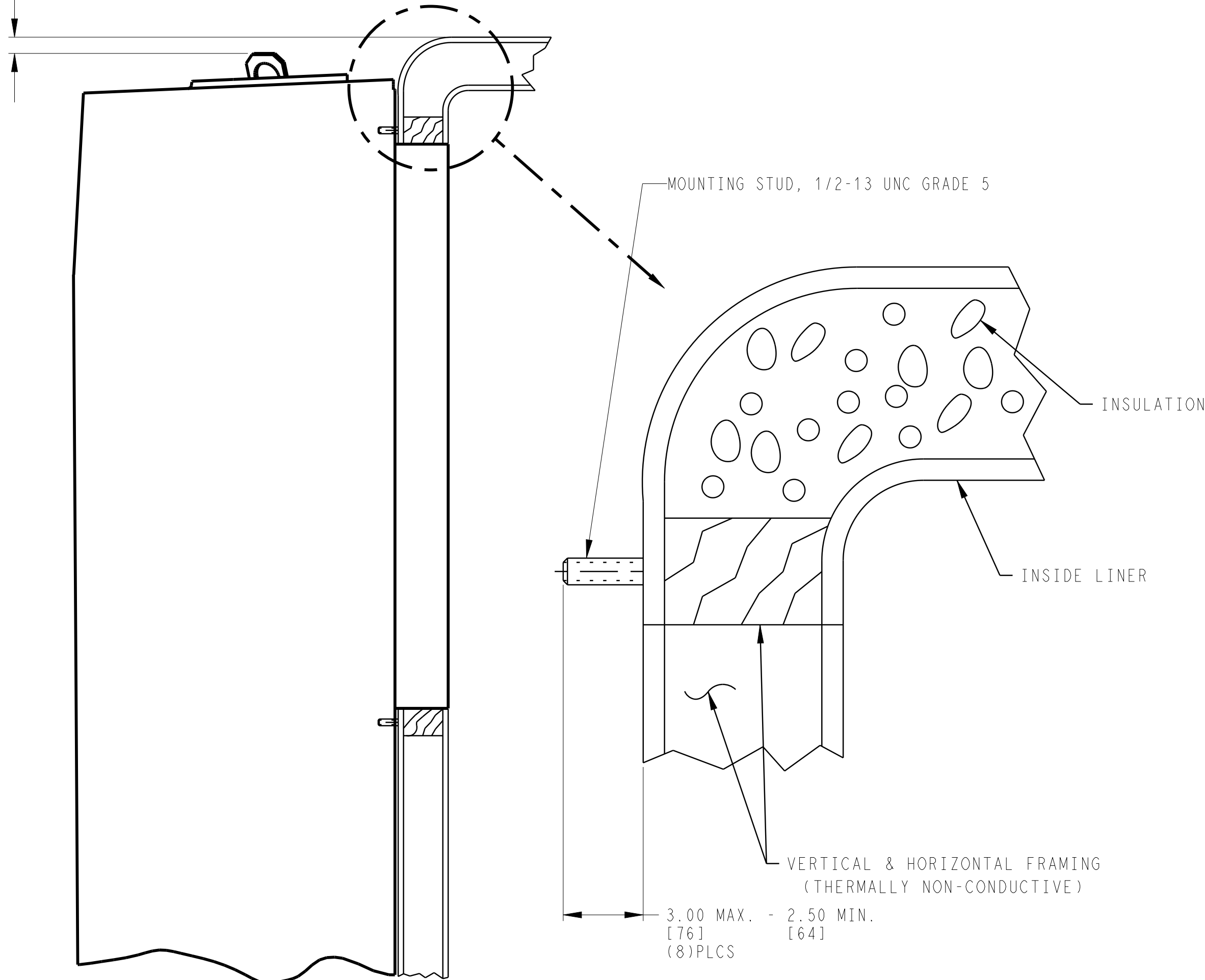
7.00 [178]

4.03 [102]

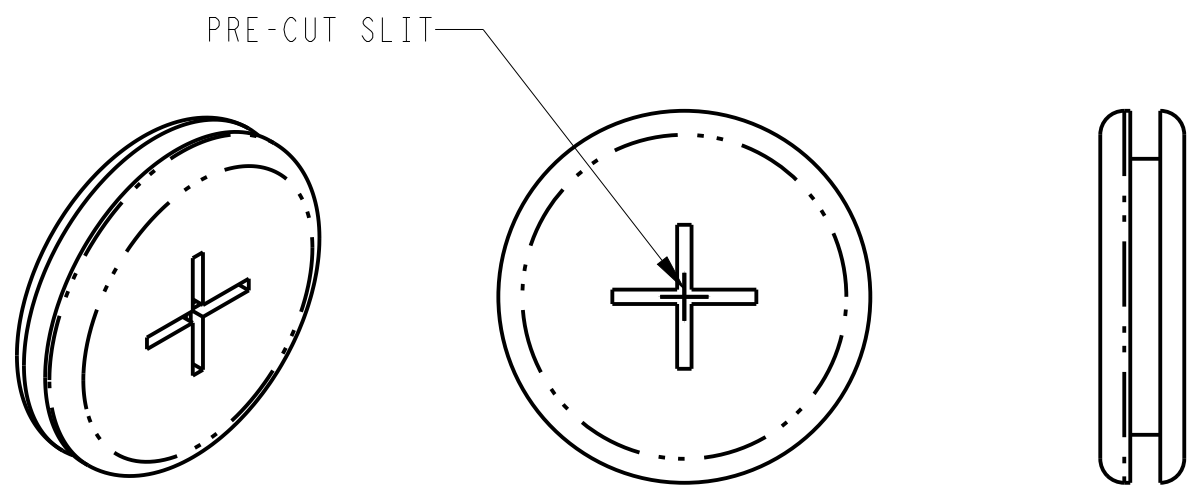
LIGHT BAR OPTIONAL  
(SEE DWG 98-03246)

TRAILER OR BOXCAR FRONT VIEW

TYPICAL GLADHAND LOCATION  
(TRAILER)

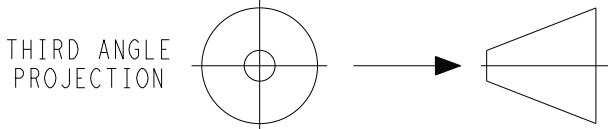


TRAILER OR BOXCAR SIDE VIEW



MOUNTING HOLE PLUG

G	REVISED NOTE TO PLUG UNUSED HOLE BEFORE INSTALLATION, WAS PLUG UNUSED HOLE AFTER INSTALLATION. ADDED NOTE FOR MOUNTING STUD. ADDED VIEW FOR MOUNTING HOLE PLUG.	27 OCT 2022	ZMG	HW		ECN116283
A	NOTE "SEE DWG 98-03246" WAS "SEE DWG 98-03140 OR 98-03246", PICTORIALY UPDATED VIEWS, TITLE BLOCK: "X4 7300/7500 TRAILER & RAIL" WAS "NDW TRAILER & RAIL; NDW136, NDW 236	06 MAR 2013	LT-NM			72N0034P13
SYM	REVISION RECORD	DATE	BY	ENGR.	M.E.	NPCA NO.



IMPERIAL INCH FORMAT:  
UNLESS OTHERWISE SPECIFIED  
DIMENSIONS ARE IN INCHES WITH  
METRIC CONVERSIONS IN [MILLIMETERS]

TITLE  
INSTALLATION INSTRUCTIONS  
X4 7300/7500 TRAILER & RAIL

DRAWING NO.  
98-02586  
SHEET 4 OF  
REV  
A

SUPERSEDES:

PART CLASSIFICATION: US EAR99

DRAWING CLASSIFICATION: US EAR99





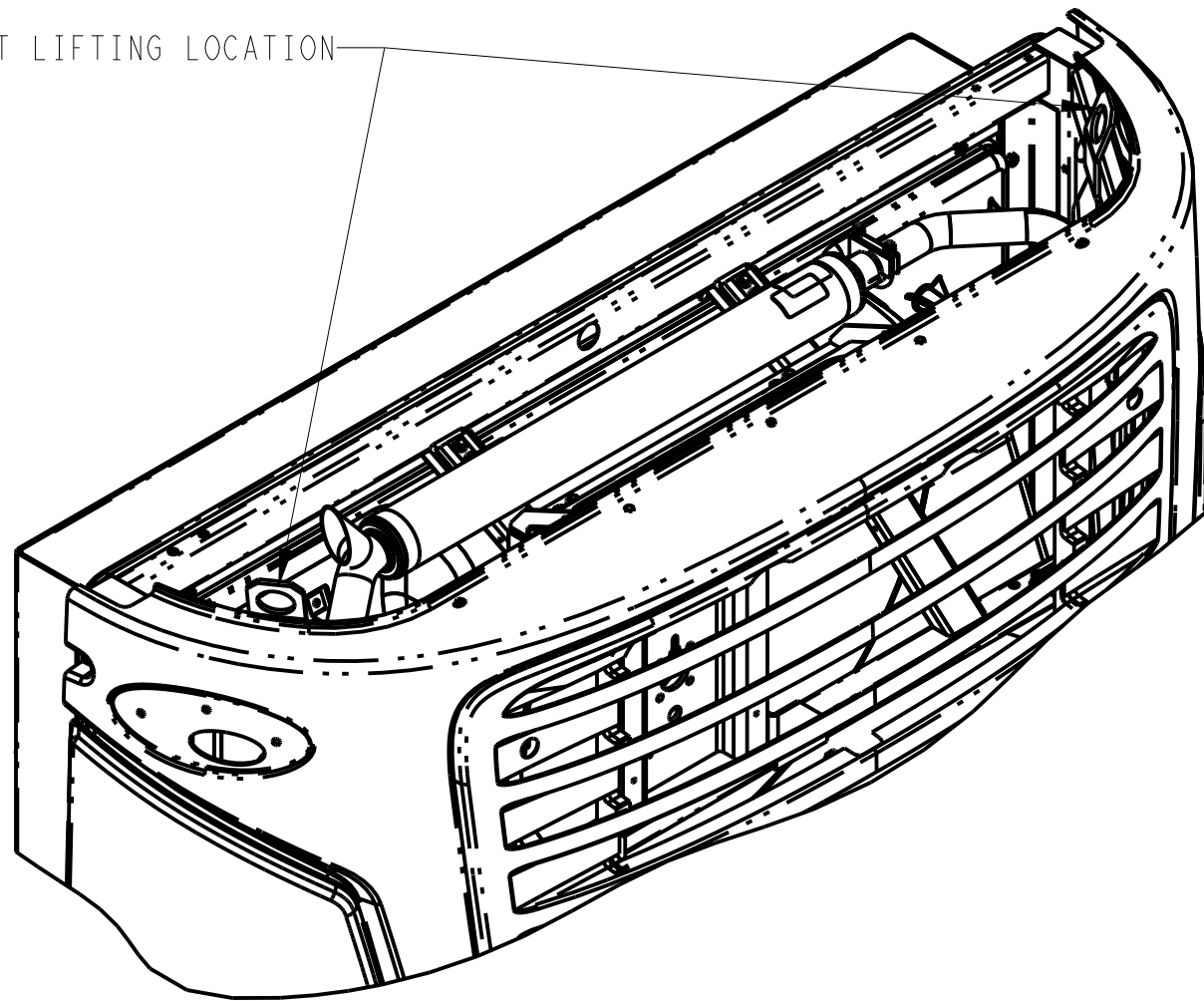
Carrier Transicold Division  
Carrier Corporation  
P.O. Box 4805  
Syracuse, New York 13221

THIS DOCUMENT AND THE INFORMATION CONTAINED THEREIN IS PROPRIETARY TO CARRIER CORPORATION AND SHALL NOT BE USED OR DISCLOSED TO OTHERS, IN WHOLE OR IN PART, WITHOUT THE WRITTEN AUTHORIZATION OF CARRIER CORPORATION.

SUBMISSION OF THESE DRAWINGS OR DOCUMENTS DOES NOT CONSTITUTE PART PERFORMANCE OR ACCEPTANCE OF CONTRACT

NOTE: BULKHEAD AND AIR CHUTE SHOWN ARE OPTIONAL FEATURES. FOR BEST AIR CIRCULATION AND PRODUCT PROTECTION, CARRIER TRANSICOLD HIGHLY RECOMMENDS THE USE OF BULKHEADS AND AIR CHUTES. CONTACT YOUR DEALER OR CARRIER TRANSICOLD FOR RECOMMENDATIONS.

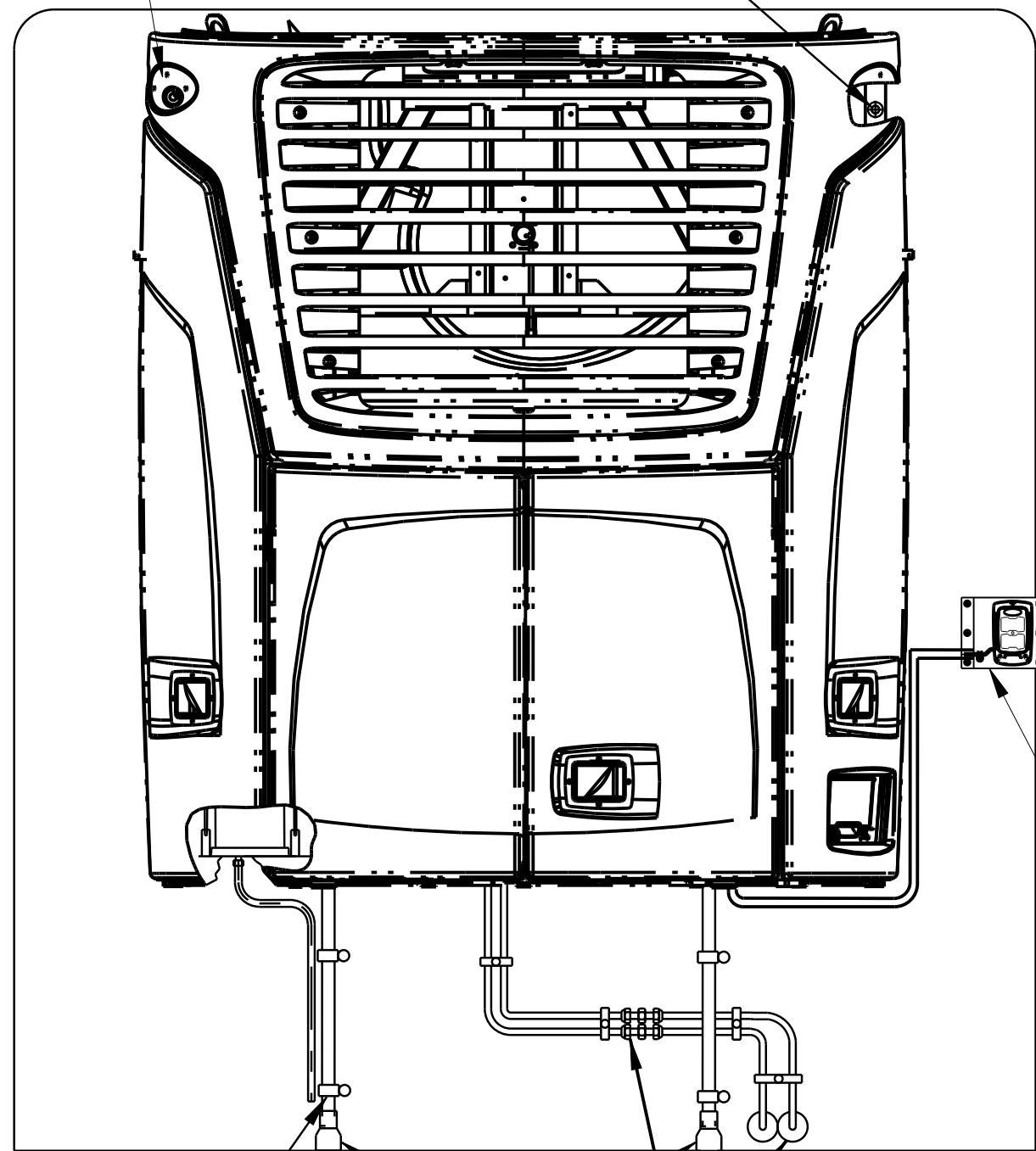
UNIT LIFTING LOCATION



X4 7300 & 7500

96 APPLY CARRIER OVAL AFTER UINIT IS FASTENED TO TRAILER AND MOUNTING HOLE IS PLUGGED. TWO PLACES

66 45 70 92 SEE NOTES 6.0 AND 7.0



CONDENSER AIR  
(FRONT FACE ONLY)

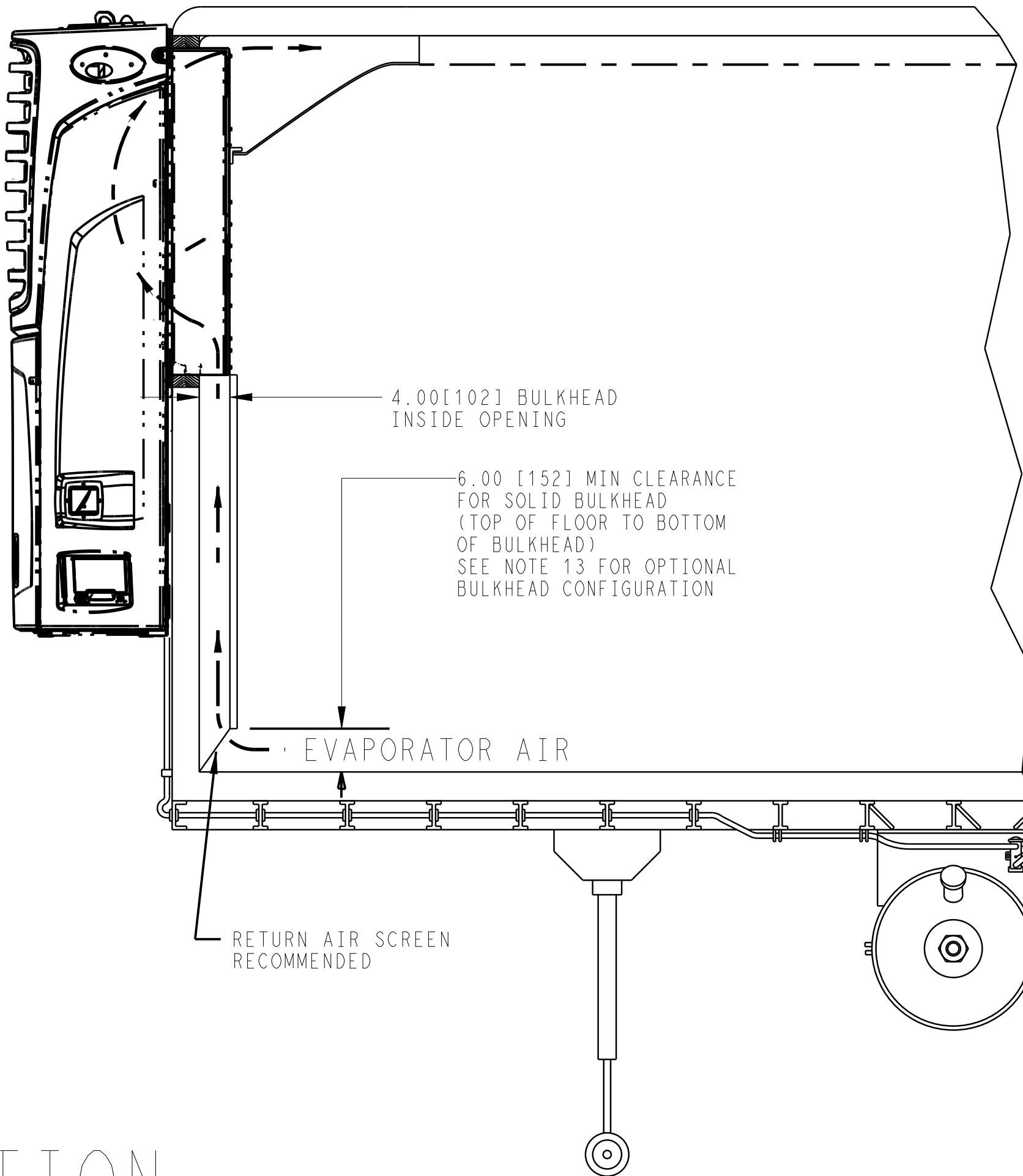
SEE NOTE 9.0

SEE NOTE 9.0

90 DRAIN LINES SUPPLIED WITH REEFER UNIT, CUT TO SUIT. (DO NOT KINK OR OTHERWISE CLOSE DOWN TUBE I.D.)

15 30 SEE NOTE 8.0

CONDENSER AIR



4.00[102] BULKHEAD INSIDE OPENING

6.00 [152] MIN CLEARANCE FOR SOLID BULKHEAD (TOP OF FLOOR TO BOTTOM OF BULKHEAD) SEE NOTE 13 FOR OPTIONAL BULKHEAD CONFIGURATION

EVAPORATOR AIR

RETURN AIR SCREEN RECOMMENDED

## PREPARE UNIT FOR INSTALLATION:

- 1.0 ENSURE ALL 8 STUDS ARE PERMANENTLY SECURED TO THE TRAILER FRONT WALL. PREPARE THE BODY TO RECEIVE THE UNIT. DIMENSIONS FOR EVAPORATOR OPENING AND MOUNTING STUD LOCATIONS AND LENGTHS CAN BE FOUND ON SHEET 4 OF THIS DRAWING.
- 2.0 REMOVE WIRE TIES HOLDING DEFROST DRAIN HOSES, COOLANT OVERFLOW TUBE, AND FUEL LINES. PLACE LINES WHERE THEY WILL NOT BE CAUGHT BETWEEN THE UNIT FRAME AND THE MOUNTING SURFACE.
- 3.0 OPEN SIDE DOORS TO ALLOW ACCESS TO MOUNTING STUD LOCATIONS ON UNIT.  
3.1 PLUG UNUSED HOLE WITH HOLE PLUG.
- 4.0 INSTALL BATTERY ACCORDING TO INSTRUCTIONS ON SHEET 6. TO PREVENT ACCIDENTAL ELECTRIFICATION, DO NOT REMOVE TERMINAL COVERS OR CONNECT TERMINALS UNTIL AFTER UNIT IS COMPLETELY INSTALLED.
- 5.0 PREPARE THE UNIT FOR LIFTING: STANDING ON A LADDER OR WORK-STAND, MAKE A CLOSE-UP INSPECTION OF THE CONDITION AND INTEGRITY OF THE LIFTING EYES, THEN HOOK LIFTING APPARATUS (LIFTING SPREADER BAR WITH SUFFICIENT CAPACITY TO SUPPORT UNIT AND BATTERY) THROUGH THE LIFTING EYES.

**WARNING:** HOOKS OR CLEAVES SHOULD BE EQUIPPED WITH A LOCKING FEATURE. LIFT POINT SHOULD BE CENTERED OVER THE UNIT'S CENTER OF GRAVITY (SEE SHEET 2). WHILE LIFTING THE UNIT INTO PLACE, INSTALLER SHOULD NOT BE UNDER OR IN PROXIMITY OF THE SUSPENDED UNIT.

## UNIT INSTALLATION:

- 6.0 RAISE THE UNIT AND INSTALL IN THE BODY OPENING. ENSURE THAT ALL EIGHT STUDS ARE FULLY ENGAGED IN THE UNIT FRAME. PLACE WASHER (ITEM 70) AND LOCK-NUT (ITEM 45) ON EACH OF THE 8 STUDS (1/2-13 UNC GRADE 5). (NOTE: THE LOWER CENTER STUD MUST BE ACCESSED FROM THE FRONT OF THE UNIT.) SNUG THE NUTS, THEN EVENLY TIGHTEN ALL EIGHT TO 75-80 FT-LB/102-109 NM DRY USING A TORQUE WRENCH. FOR ALTERNATE SIZE M14 CLASS 8.8 STUDS, TIGHTEN ALL EIGHT TO 83 FTLBS/112 NM DRY USING A TORQUE WRENCH. FOR ALTERNATE SIZE M13 CLASS 8.8 STUDS, TIGHTEN ALL EIGHT TO 77 FTLBS/104 NM DRY USING A TORQUE WRENCH. REMOVE LIFTING APPARATUS.
- 7.0 INSTALL MOUNTING HOLE PLUGS (ITEM 92) IN UNIT FRAME WHERE MOUNTING STUDS ARE LOCATED. ENSURE ALL 9 LOCATIONS HAVE HOLE PLUGS. IF THE MOUNTING STUD EXCEEDS THE MAXIMUM LENGTH OF 3.0 INCHES FROM THE TRAILER OR BOXCAR SURFACE, A PRE-CUT SLIT IS INCORPORATED IN THE MOUNTING HOLE PLUG TO ALLOW THE STUD TO PROTRUDE THROUGH THE PLUG. (SEE SHT.4).
- 8.0 ROUTE DEFROST DRAIN HOSES DOWN THE FRONT OF THE TRAILER OR BOXCAR AND CLAMP TO FRONT WALL USING 2 CLAMPS (ITEM 15) AND 2 THREAD FORMING SCREWS (ITEM 30) FOR EACH DRAIN HOSE. CUT HOSE TO PROPER LENGTH (APPROXIMATELY 3.00[76.2] ABOVE 5+h-WHEEL PLATE ON TRAILER) AND INSTALL KAZOOS (ITEM 90) ON THE HOSES.
- 9.0 INSTRUCTIONS FOR FUEL LINE CONNECTION ARE SUPPLIED WITH THE FUEL TANK KIT. INSTRUCTIONS FOR LIGHT BAR INSTALLATION ARE INCLUDED WITH THE LIGHT BAR KIT.

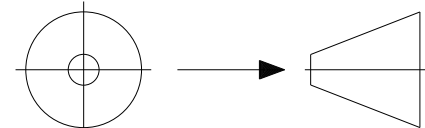
## AFTER INSTALLATION

- 10.0 PERFORM PRE-DELIVERY INSPECTION. COPIES OF COMPLETED CHECKLIST SHOULD BE SUPPLIED TO SELLING DEALER AND CUSTOMER.
- 11.0 OPERATE UNIT IN CONTINUOUS RUN WITH REAR DOORS OPEN (MANUAL) MODE. REFER TO THE PRE-DELIVERY INSPECTION FORM SUPPLIED WITH UNIT FOR THE RECOMMENDED LENGTH OF TIME. PERFORM FINAL INSPECTION ON UNIT. RUN- IN SET UP SHOULD BE "PER PDI SHEET".
- 12.0 IMPORTANT: PRIOR TO FINAL DELIVERY TO CUSTOMER, WARRANTY REGISTRATION MUST BE COMPLETED. ONE COPY SHOULD BE PROVIDED TO THE CUSTOMER, ONE COPY TO THE SELLER, AND THE FINAL COPY MUST BE SENT TO CARRIER CARRIER TRANSICOLD. IN-SERVICE DATE MUST BE STAMPED ON THE UNIT IN THE PROPER LOCATION (SERIAL NUMBER PLATE) TO ACTIVATE WARRANTY COVERAGE.
- 13.0 OPTIONAL BULKHEAD CONFIGURATION: HOLE PATTERN OR OPEN AREA FOR RETURN AIR FLOW MUST TOTAL AT LEAST 2.75 FT<sup>2</sup> OF AIR PASSAGE. HOLE PATTERN OR OPEN AREA MUST BE RECESSED SO THAT CARGO LOADED AGAINST BULKHEAD WILL NOT OBSTRUCT AIR PASSAGE OPENINGS. PERFORATED BULKHEADS, THAT MEET THESE REQUIREMENTS, MAY BE INSTALLED TIGHT WITH FLOOR.

# UNIT INSTALLATION

H	UPDATED SPEC 1.0 AND 6.0.	02 MAY 2025	ZMG	NB		ECN1195346
G	UPDATED SPEC 1.0 & 7.0. ADDED SPEC 3.1.	27 OCT 2022	ZMG	HW		ECN1161283
F	UPDATED STEP 4.0 & 5.0.	14 AUG 2019	LT-SK	RC		72N0242P19
E	REVISED NOTES 10.0, 11.0 AND 12.0.	03 APR 2017	ZMG			72N0217P17
SYM	REVISION RECORD	DATE	BY	ENGR.	M.E.	NPCA NO.

THIRD ANGLE PROJECTION



IMPERIAL INCH FORMAT:  
UNLESS OTHERWISE SPECIFIED  
DIMENSIONS ARE IN INCHES WITH  
METRIC CONVERSIONS IN [MILLIMETERS]

TITLE

INSTALLATION INSTRUCTIONS  
X4 7300/7500 TRAILER & RAIL

DRAWING NO.

98-02586

SHEET 5 of

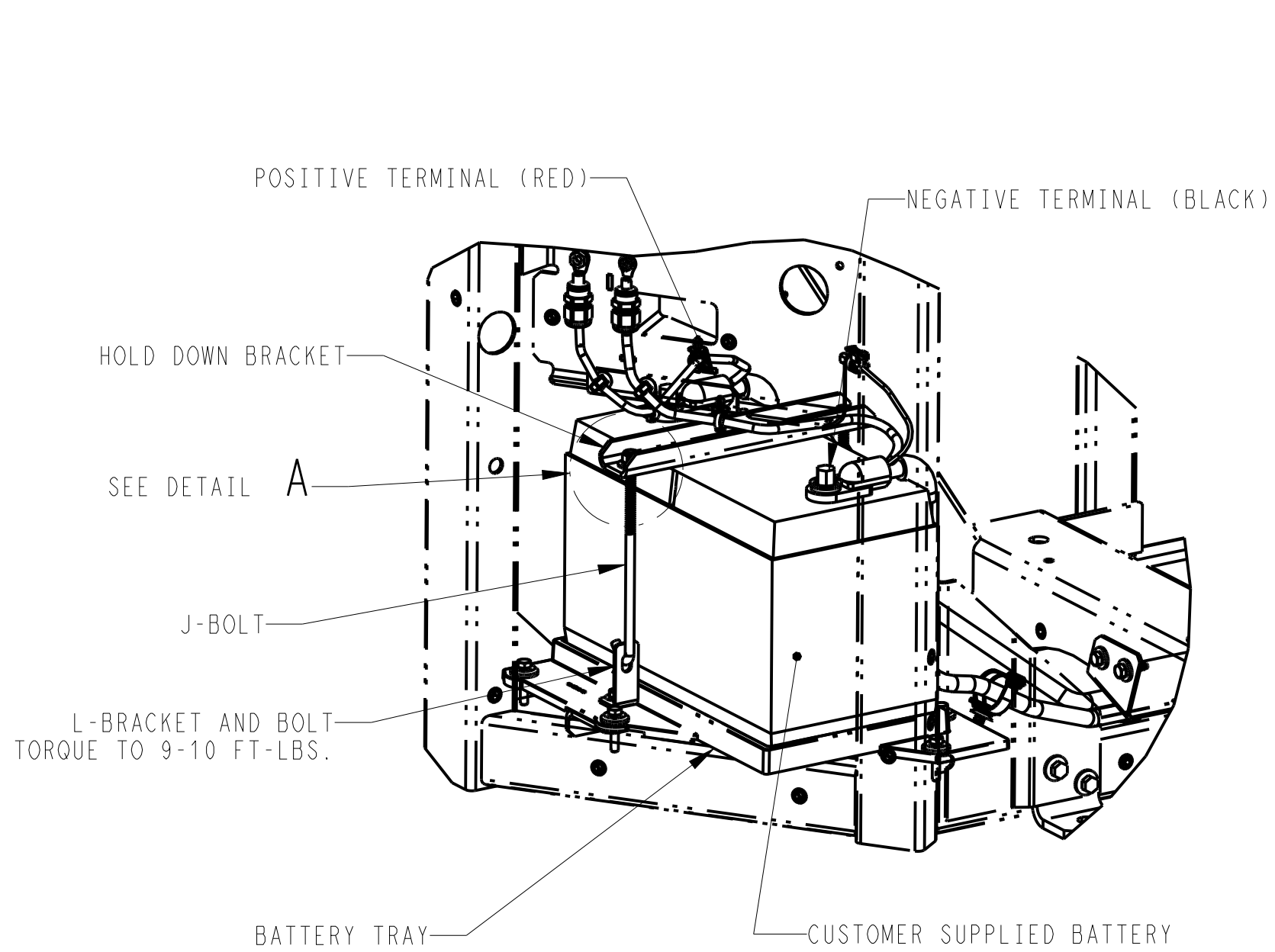
REV

H

SUPERSEDES:

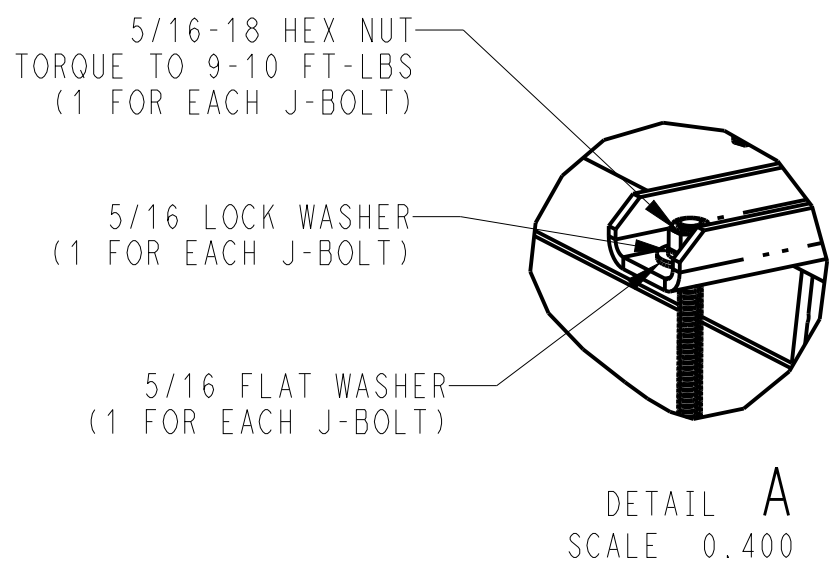
PART CLASSIFICATION: US EAR99

DRAWING CLASSIFICATION: US EAR99

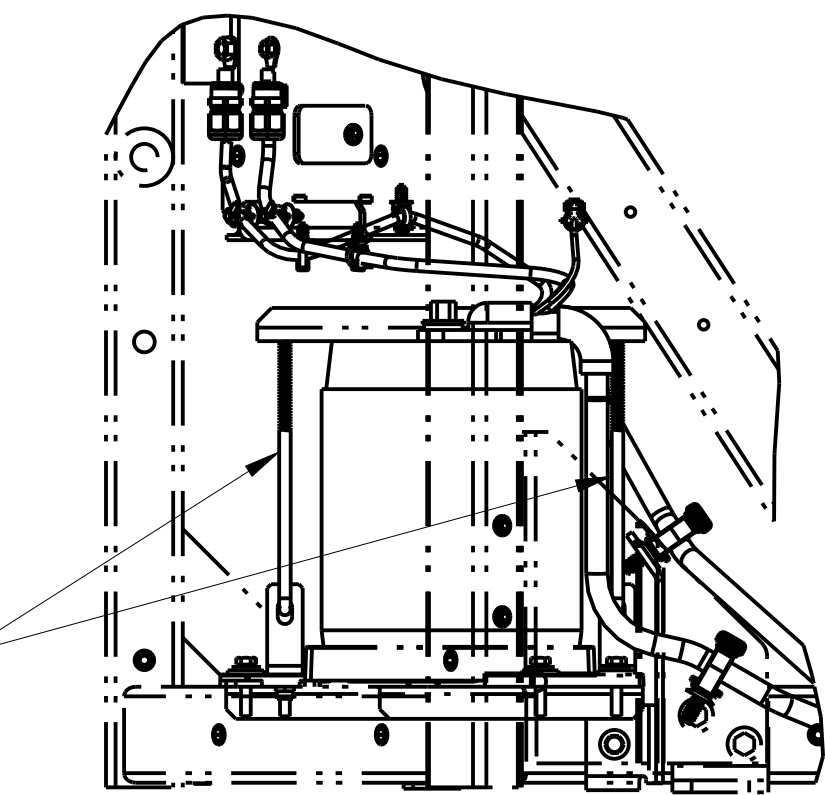


INSTALL BATTERY INTO  
UNIT WITH POSITIVE (+) TERMINAL  
TOWARDS THE REAR.

SCALE 0.200



5/16-18 BATTERY  
J- BOLT (2)



SCALE 0.200

BATTERY INSTALLATION PROCEDURE FOR  
UNITS SHIPPED WITHOUT BATTERY

#### UNITS SUPPLIED WITH BATTERY INSTALLED

- 1.0 CUT WIRE TIE(S) THAT HOLD BATTERY CABLES TO UNIT FRAME.
- 2.0 CONNECT RED BATTERY CABLE TO THE POSITIVE (+) BATTERY TERMINAL; CONNECT BLACK CABLE TO NEGATIVE (-) BATTERY TERMINAL (USE OF CORROSION INHIBITOR IS RECOMMENDED).
- 3.0 POSITION TERMINAL COVERS SUPPLIED WITH CABLES OVER TERMINALS.
- 4.0 INSTALL DRAIN HOSE (ITEM 6) TO BARB ON BOTTOM OF BATTERY TRAY USING CLAMP (ITEM 5). ROUTE AND CLAMP HOSE TO UNIT DRAIN LINE USING WIRE TIES (ITEM 55).

#### UNITS SUPPLIED WITHOUT BATTERY INSTALLED

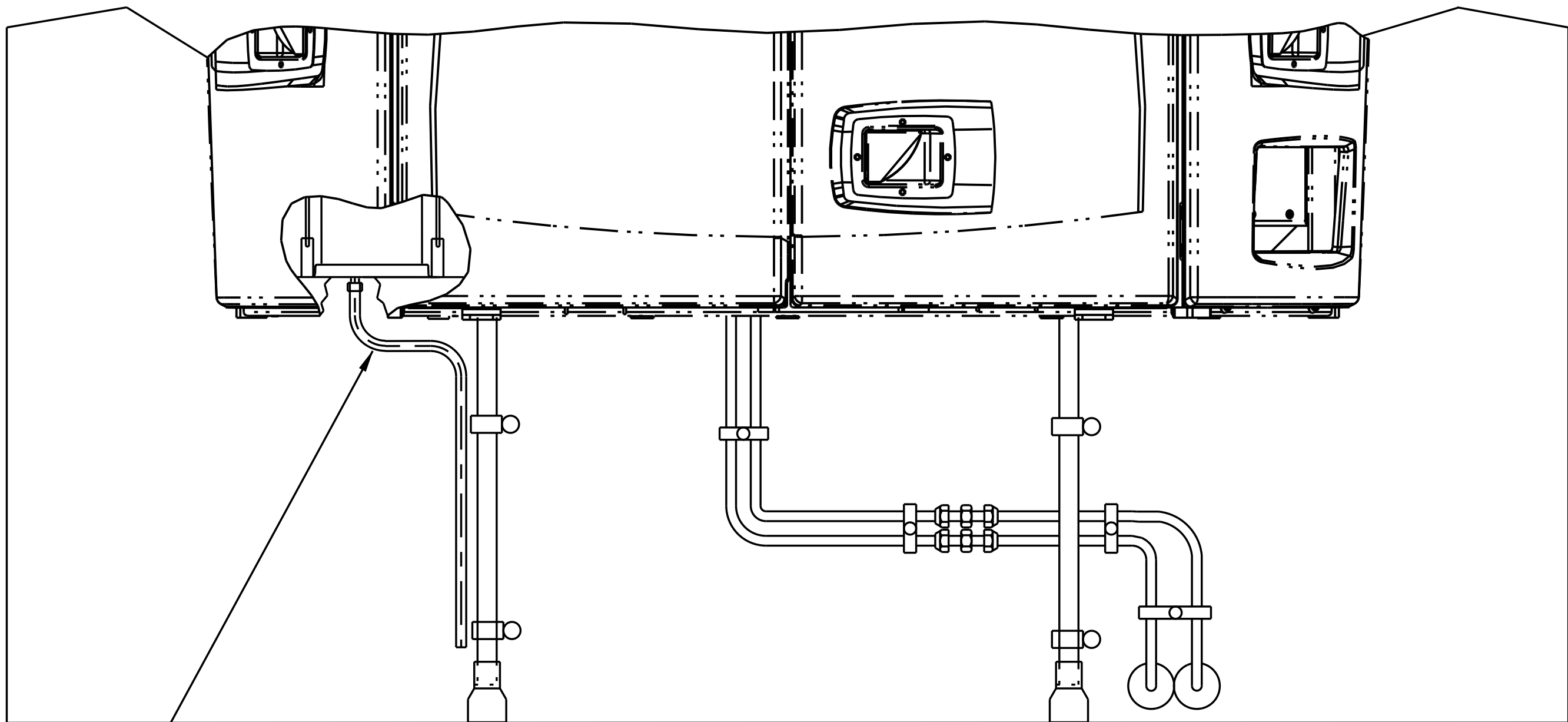
- 1.0 USE THE FOLLOWING INFORMATION TO CORRECTLY SELECT THE BATTERY PERFORMANCE NEEDED FOR REFRIGERATION UNITS.

GROUP SIZE: GROUP 31  
VENT LOCATION: SIDE VENT  
VOLTS: 12 VOLTS DC  
AMPERAGE: MINIMUM 700 COLD CRANKING AMPS @ 0°F  
MINIMUM 545 COLD CRANKING AMPS @ -20°F

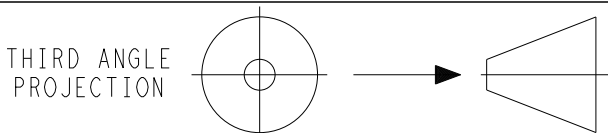
NOTE: WHEN SELECTING A SPECIFIC BRAND OF BATTERY, ALWAYS ENSURE THAT THE BATTERY CHOSEN IS RATED AT 0°F (0 DEGREES FAHRENHEIT) AND NOT 0°C (0 DEGREES CELSIUS). FAILURE TO USE THE PROPER BATTERY SIZE WILL RESULT IN REDUCED BATTERY LIFE AND A NO-START CONDITION.

- 2.0 CUT WIRE TIE HOLDING THESE PARTS IN THE BATTERY TRAY AND REMOVE PARTS. PLACE BATTERY IN TRAY WITH NEGATIVE (-) TERMINAL TO THE FRONT OF THE UNIT AND INSTALL CURBSIDE L-BRACKET AND BOLT. CONNECT BATTERY CABLES (THE USE OF A CORROSION INHIBITOR ON THE TERMINALS IS RECOMMENDED); RED CABLE TO POSITIVE (+) TERMINAL, BLACK CABLE TO THE NEGATIVE (-) TERMINAL. CABLES SHOULD BE ROUTED AS SHOWN. VERIFY BATTERY CABLES DO NOT CONTACT THE COMPRESSOR, SHARP EDGES, ETC. TIGHTEN TERMINAL CONNECTORS SECURELY.
- 3.0 LAY HOLD-DOWN BRACKET OVER THE TOP OF BATTERY. INSTALL J-BOLT HOOK INTO SLOT ON L-BRACKETS AND THROUGH SLOT ON HOLD DOWN BRACKET. SECURE J-BOLT WITH WASHERS AND NUTS AS SHOWN. SECURELY TIGHTEN THE NUTS TO PREVENT MOVEMENT OF THE BATTERY.
- 4.0 POSITION TERMINAL COVERS SUPPLIED WITH CABLES OVER TERMINALS.
- 5.0 INSTALL DRAIN HOSE (ITEM 6) TO BARB ON BOTTOM OF BATTERY TRAY USING CLAMP (ITEM 5). ROUTE AND CLAMP HOSE TO UNIT DRAIN LINE USING WIRE TIES (ITEM 55).

### ITEMS SUPPLIED IN BATTERY KIT (PARTS IN POLY BAG AND/OR ATTACHED TO BATTERY TRAY)



D	UPDATED VIEWS & CALLOUTS PER UPDATED BATTERY CABLES & BRACKETS. REVISED NOTES 2.0 & 3.0 FOR UNITS WITHOUT SUPPLIED BATTERY.	21 FEB 2014	ZMG			72N0222P14
A	ADDED VIEW D-D, DETAIL VIEW A , ADDED NOTES, TITLE BLOCK; "X4 7300/7500TRAILER & RAIL" WAS "NDW TRAILER & RAIL; NDW136, NDW 236	06 MAR 2013	LT-NM			72N0034P13
SYM	REVISION RECORD	DATE	BY	ENGR.	M.E.	NPCA NO.



IMPERIAL INCH FORMAT:  
UNLESS OTHERWISE SPECIFIED  
DIMENSIONS ARE IN INCHES WITH  
METRIC CONVERSIONS IN [MILLIMETERS]

TITLE  
INSTALLATION INSTRUCTIONS  
X4 7300/7500 TRAILER & RAIL

DRAWING NO.  
98-02586  
SHEET 6 OF  
REV  
D

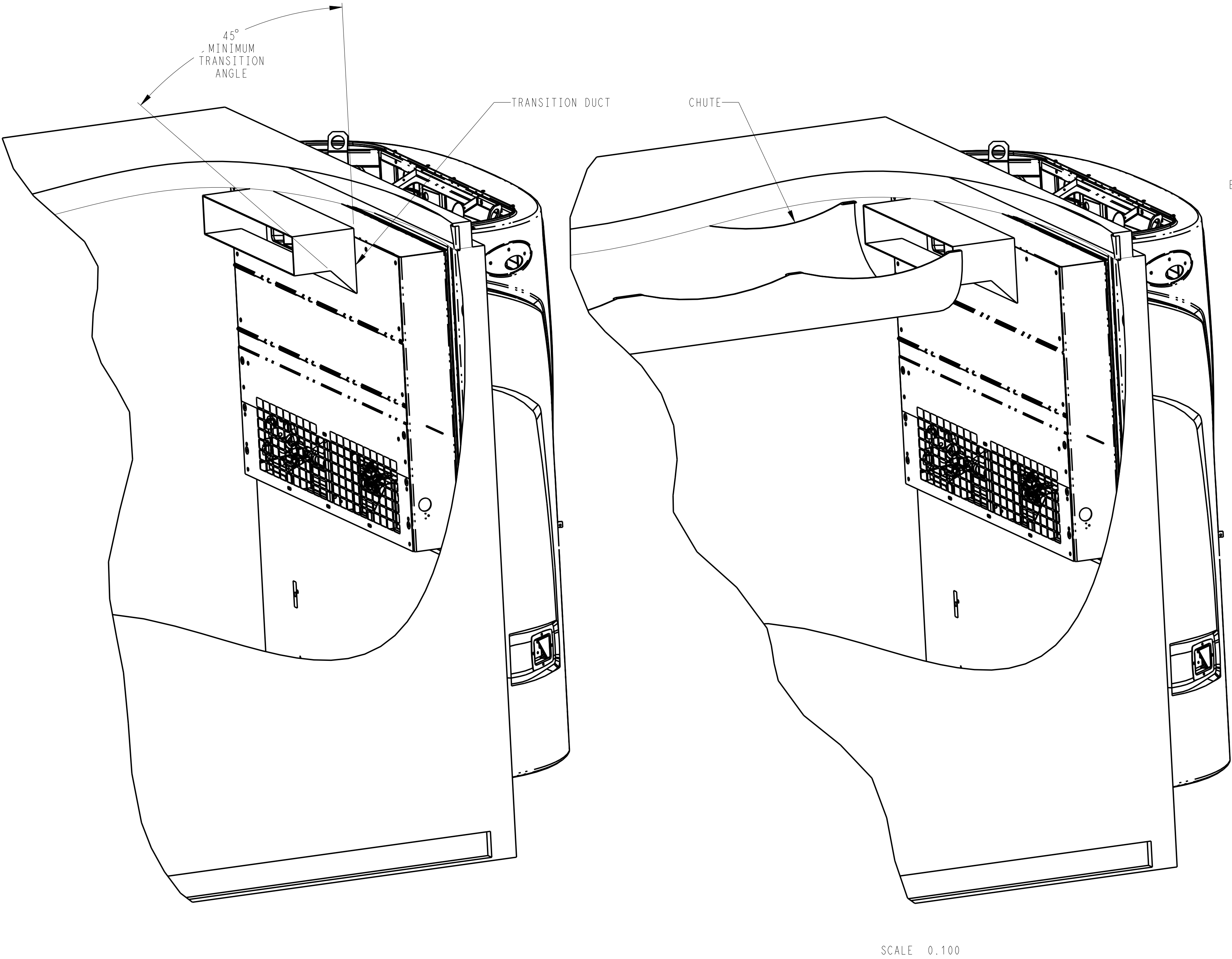
SUPERSEDES:

PART CLASSIFICATION: US EAR99

DRAWING CLASSIFICATION: US EAR99

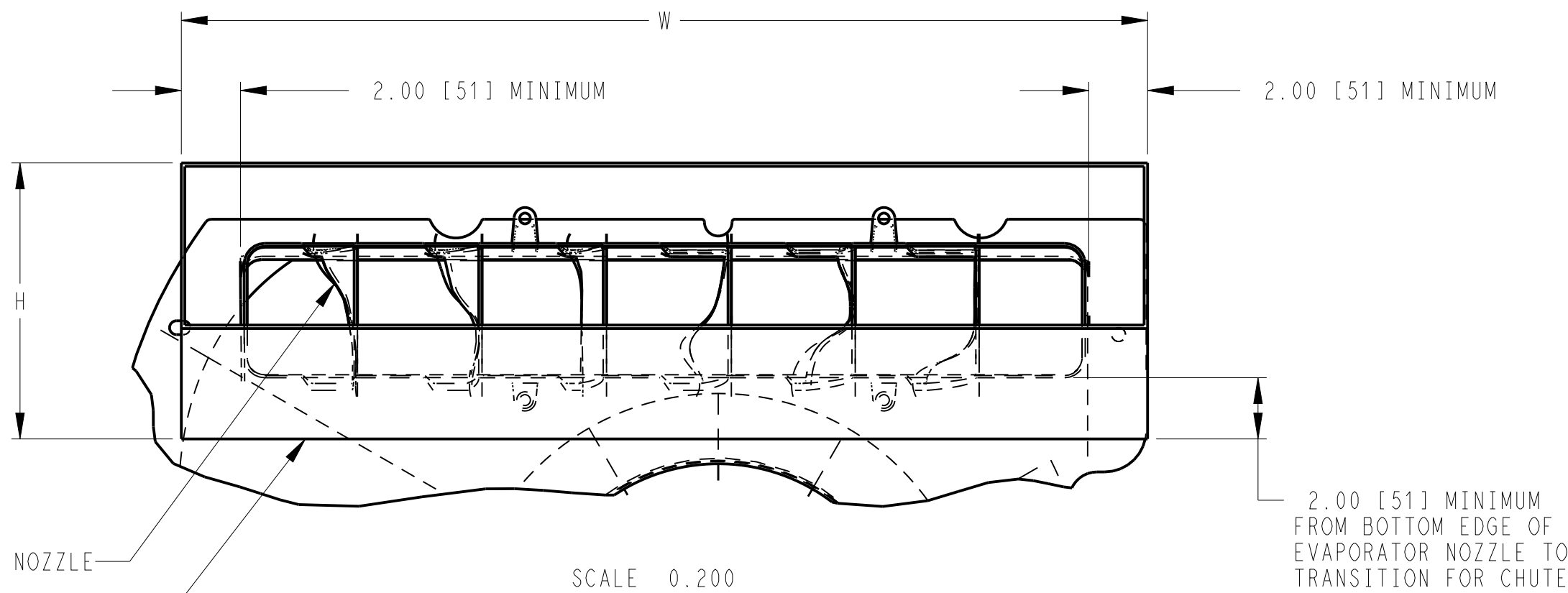
NOTE: BULKHEAD AND AIR CHUTE SHOWN ARE OPTIONAL FEATURES.  
FOR BEST AIR CIRCULATION AND PRODUCT PROTECTION,  
CARRIER TRANSICOLD HIGHLY RECOMMENDS THE USE OF  
BULKHEADS AND AIR CHUTES. CONTACT YOUR DEALER OR  
CARRIER TRANSICOLD FOR RECOMMENDATIONS.

# TRANSITION & CHUTE DETAILS



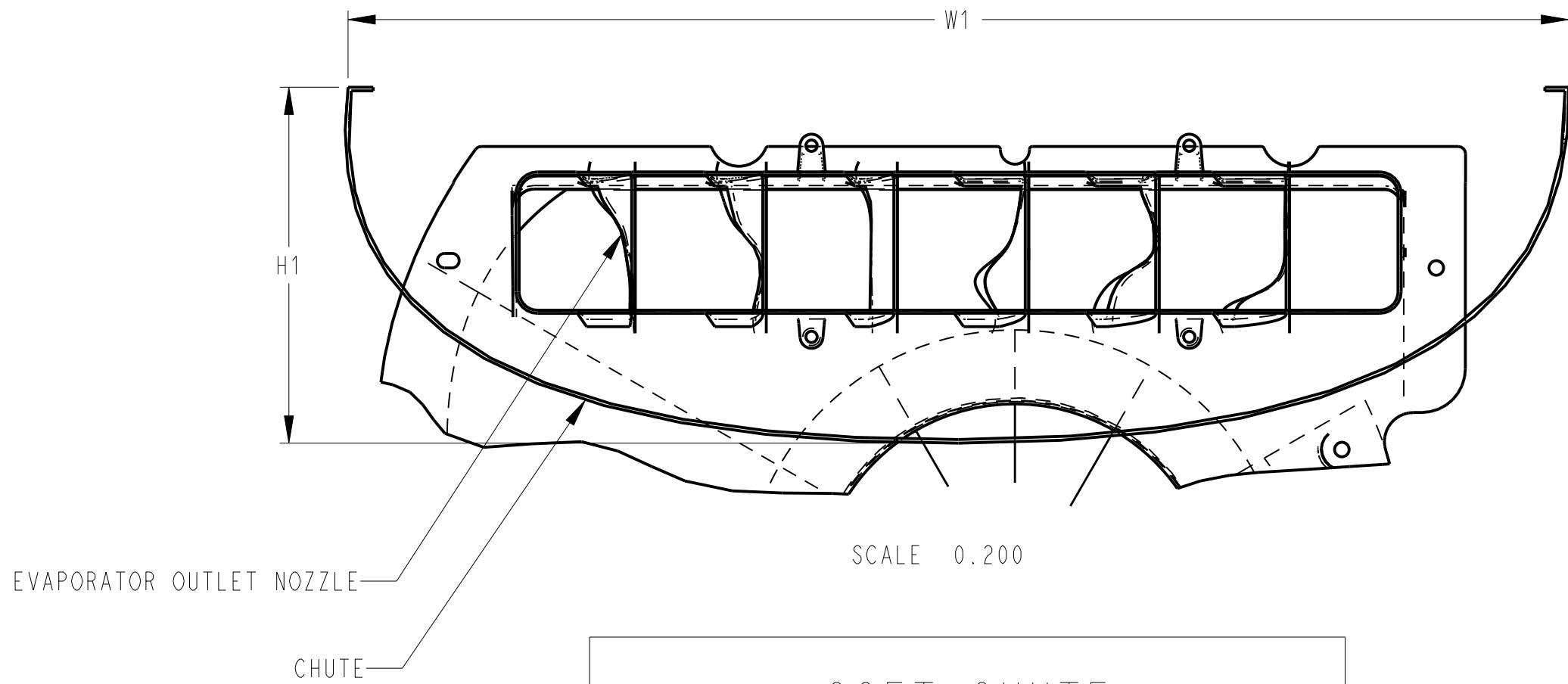
CHUTE REMOVED FOR CLARIFICATION  
OF TRANSITION

SCALE 0.100



HARD RECTANGULAR  
CHUTE MIN. DIMENSIONS

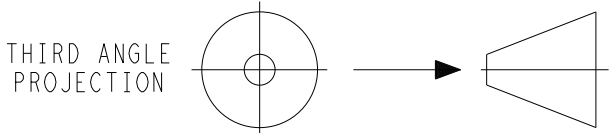
W	H
60.00	6.00
54.00	6.75
48.00	7.50
42.00	8.75
36.00	10.00
30.00	12.00



SOFT CHUTE  
MINIMUM DIMENSIONS

W1	H1
60.00	9.00
54.00	9.75
48.00	11.00
42.00	12.25
36.00	13.75
30.00	15.00

A	TITLE BLOCK: "X4 7300/7500TRAILER & RAIL" WAS "NDW TRAILER & RAIL; NDW136, NDW 236	06 MAR 2013	LT-NM			72N0034P13
-	INITIAL RELEASE	22MAR2012	KFV			72N0062P12
SYM	REVISION RECORD	DATE	BY	ENGR.	M.E.	NPCA NO.



IMPERIAL INCH FORMAT:  
UNLESS OTHERWISE SPECIFIED  
DIMENSIONS ARE IN INCHES WITH  
METRIC CONVERSIONS IN [MILLIMETERS]

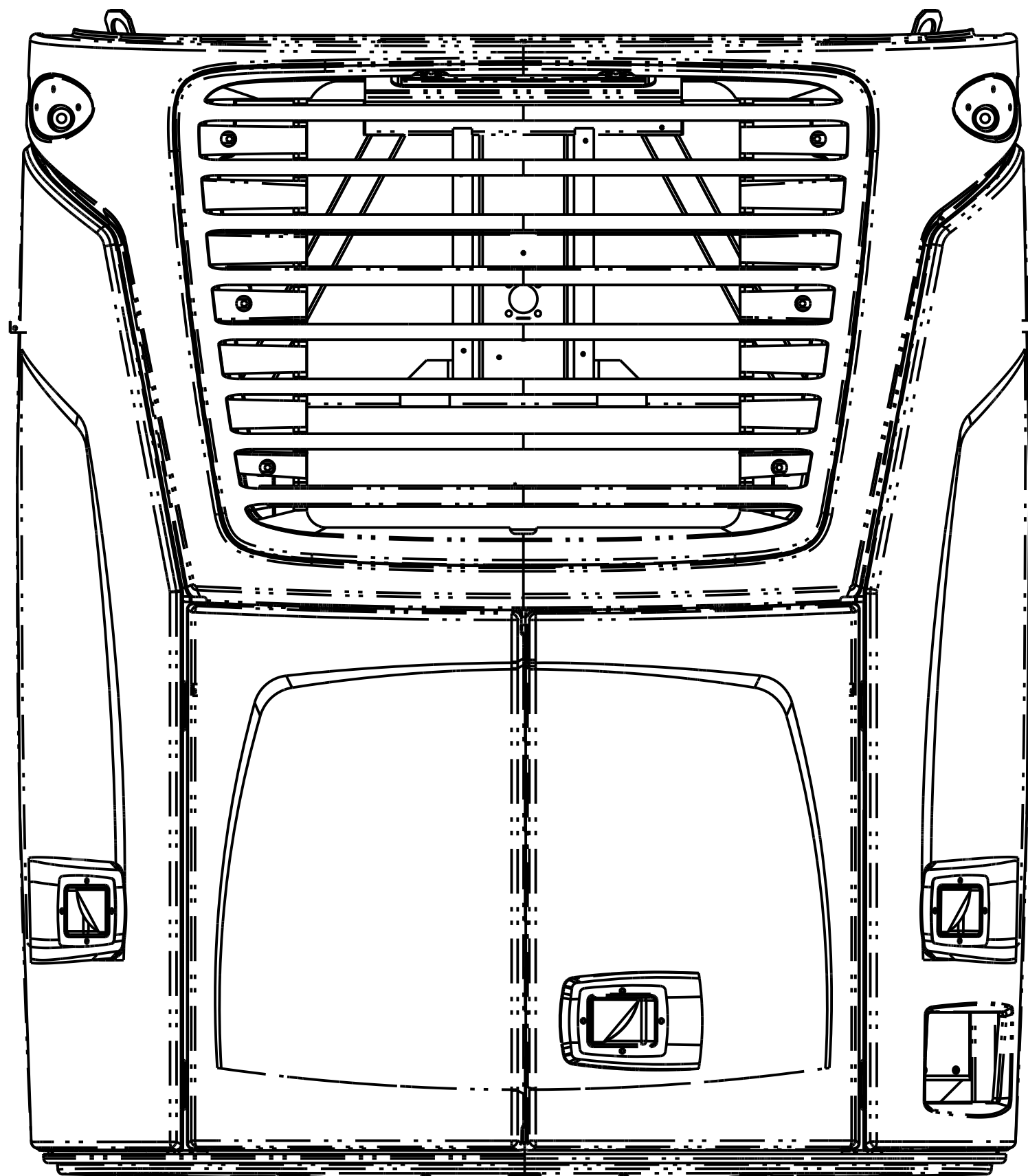
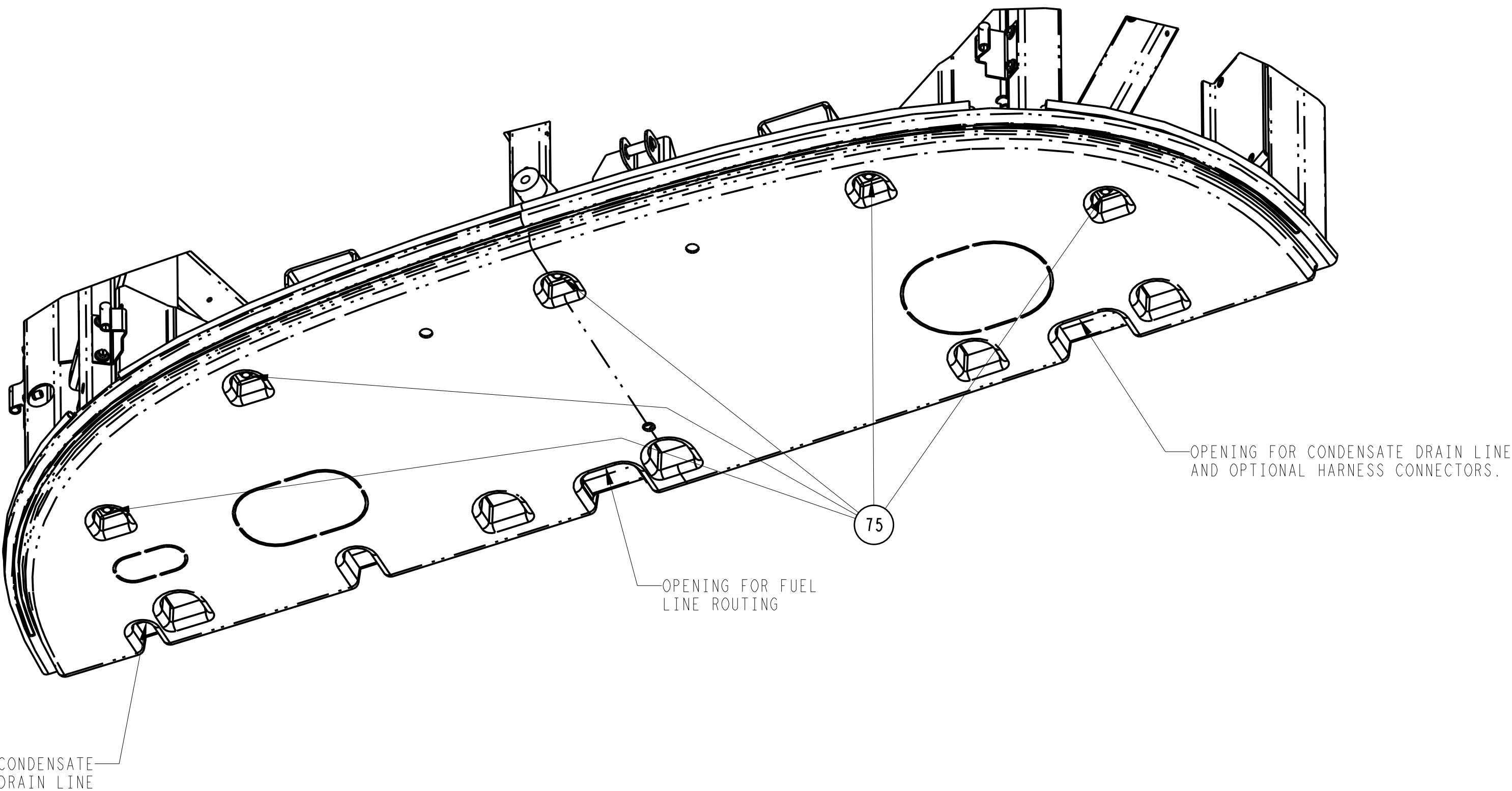
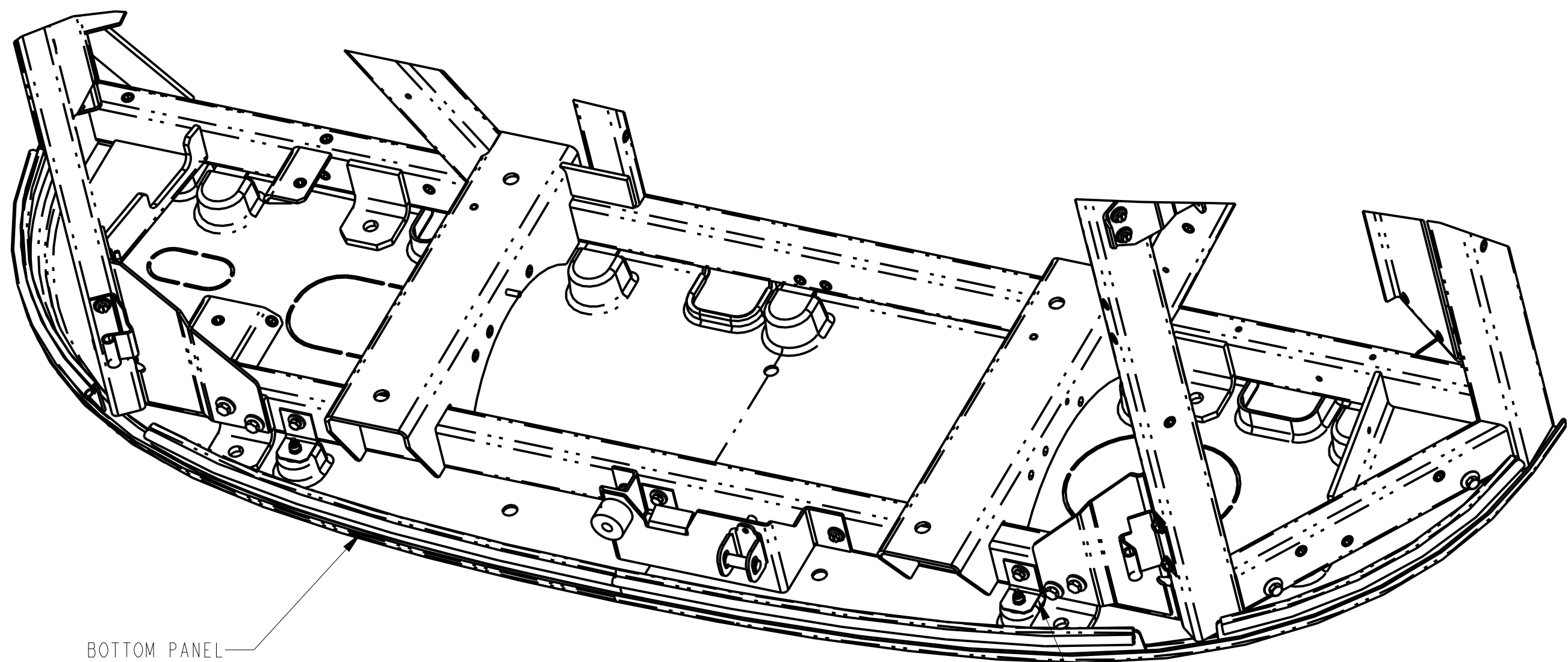
TITLE  
INSTALLATION INSTRUCTIONS  
X4 7300/7500 TRAILER & RAIL

DRAWING NO.  
98-02586  
SHEET 7 OF  
REV  
A

SUPERSEDES:

PART CLASSIFICATION: US EAR99

DRAWING CLASSIFICATION: US EAR99

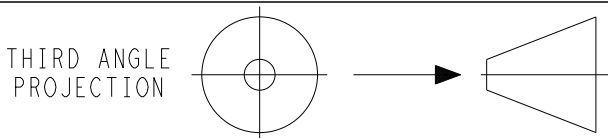


## BOTTOM PANEL INSTALLATION

### NOTES:

- 1.0 INSTALL (5) MOUNTING ANGLES (ITEM #80), WITH RIVNUTED FLANGE DOWN, TO FRAME USING SUPPLIED SCREWS (ITEM #75). TORQUE SCREWS TO 96 IN-LBS, KEEPING THE BOTTOM OF THE ANGLES FLUSH AND PARALLEL TO THE BOTTOM OF THE FRAME.
- 2.0 SLIDE (5) OPENINGS IN THE BOTTOM PANEL OVER THE (5) REAR MOUNTING ANGLES ON THE FRAME AND SECURE BOTTOM PANEL TO OTHER (5) MOUNTING ANGLES USING SUPPLIED SCREWS (ITEM #175). TORQUE SCREWS SECURELY TO 96 IN-LBS.

E	REMOVED NOTE AND ADDED BOTTOM PANEL INSTALLATION.	03 APR 2017	ZMG			72N0217P17
D	NEW SHEET.	21 FEB 2014	ZMG			72N0222P14
SYM	REVISION RECORD	DATE	BY	ENGR.	M.E.	NPCA NO.



IMPERIAL INCH FORMAT:  
UNLESS OTHERWISE SPECIFIED  
DIMENSIONS ARE IN INCHES WITH  
METRIC CONVERSIONS IN [MILLIMETERS]

TITLE

INSTALLATION INSTRUCTIONS  
X4 7300/7500 TRAILER & RAIL

DRAWING NO.

98-02586

SHEET 8 OF

REV

E

SUPERSEDES: \_\_\_\_\_

PART CLASSIFICATION: US EAR99

DRAWING CLASSIFICATION: US EAR99