

TECHNICAL DATASHEET

DA6800ES Mobile Ext 68 kg ABE Chubb

Features

The Chubb 68kg ABE Mobile extinguisher features:

- Stainless steel polyester powder coated cylinder
- Chrome plated brass ball valve
- Mild steel polyester powder coated trolley
- Steel hub wheels with roller bearings and gel-filled puncture free tyres
- Plated fittings

Suitable for use in:

- High coverage areas
- Remote airstrips and locations where water is difficult to access
- Small fuel storage areas
- Manufacturing plants
- Mining sites
- Alcohol and flammable liquid or chemical stores
- Suitable for fires involving wood, paper, flammable liquid or live electrical equipment

Specifications

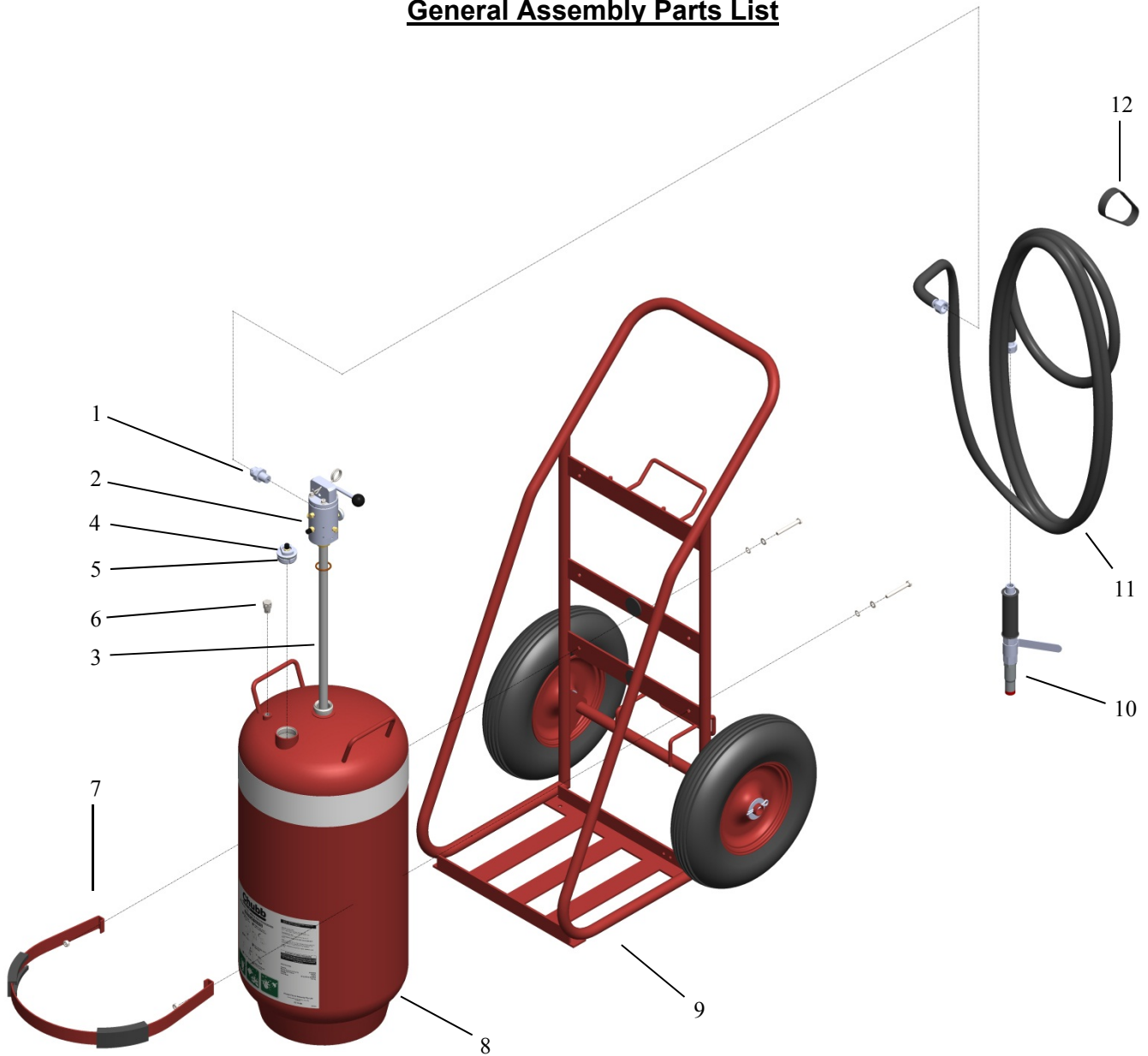
Model Number:	DA6800ES
Type:	DCP Mobile – Stored Pressure
Capacity:	68kg (Tol: ±2%)
Contents:	ABE Powder
Rating:	A 9KG portable extinguisher has achieved a 6A:80B:E rating with the same extinguishant.
Test Pressure:	3.6 MPa
Operating Pressure:	1350 kPa
Nominal Mass:	116.4kg
Discharge Time:	68 seconds
Discharge Range:	6m approx.
Hose Length:	6m
Nozzle Orifice:	12.7mm
Service Temperature:	-10°C to +65°C
Overall dimensions:	700W x 670D x 1200H mm

NOTE:

Nominal mass and discharge times listed are approximate. Slight variations may occur.



General Assembly Parts List



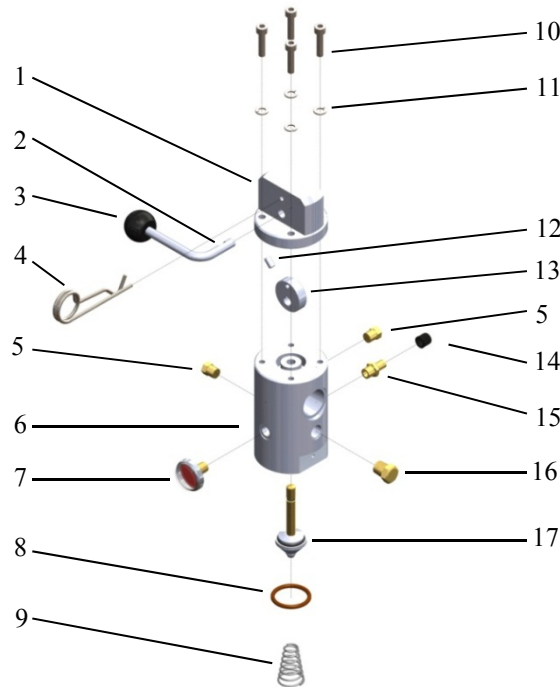
1.	Nipple Reducing	40257
2.	Valve	110271
3.	Diptube	36061
4.	Filler Plug	23100
5.	O-ring	90221
6.	Burst Disc	112255
7.	Strap Assy	71230
	(Inc. bolts, washers & nuts)	
8.	Cylinder 65L	16094
9.	Trolley Assy (Inc. wheels)	70062
10.	Discharge Gun	42003
11.	Hose Assy	44010
12.	Velcro Tie	92433

Powder: 68KG ABE40 50117 / 50122

Note: Not all parts shown may be available stocked items

110271 Valve Part List

1.	Body - Manual	110245
2.	Lever	110251
3.	Knob	107555
4.	Pull Pin	104657
5.	Plug	118551
6.	Main Body	110243
7.	Gauge	90441
8.	O-ring	107656
9.	Spring	110273
10.	Screws	110266
11.	Washer	94243
12.	Grub Screw	110264
13.	Cam	110249
14.	Schrader Valve Cap	40503
15.	Schrader Valve	94001
16.	Plug	103604
17.	Stem Assy	110263



Valve Service Kit 28035	
Includes:	
Schrader Valve 94001	x 1
Schrader Valve Cap 40503	x 1
Stem Assy 110263	x 1
Gauge 90441	x 1
O-ring 107656	x 1

Service Requirements

Service in accordance with Australian Standard AS1851.

Additional AS1851 Service Requirements:

- Replace Dry Chemical Powder every five (5) years
- When installed in an aggressive environment it is recommended to carry out the 5 yearly service every three years
- Pressure test the hose assembly to 2MPa every 5 years or when cylinder is pressure tested.
- The recommended location for stamping the cylinder pressure test date is on the skirt of the cylinder consisting of figures not less than 3mm in height and shall, as a minimum, be of the form MM/YY, or MM/YYYY.

Recharge Instructions

CAUTION:- Ensure extinguisher is fully depressurised prior to removal of the operating head.

- 1) Ensure that the cylinder valve is closed and the discharge gun is open, remove the hose assembly from the cylinder.
- 2) Slowly unscrew filler plug two turns and allow all pressure to exhaust. When all pressure is expelled, remove plug and sealing o-ring.
- 3) Disconnect and remove extinguisher from trolley.
- 4) Slowly unscrew cylinder valve assembly including diptube, and remove from cylinder.
- 5) Dismantle cylinder valve assembly by removing hose and diptube assembly. Thoroughly clean all components, check on condition of seals and seats and replace if necessary. Clean inside valve body and diptube ensuring that the tube is not blocked.
- 6) Reassemble cylinder valve assembly. Use Loctite 577 on threads.
- 7) Empty all residue powder from cylinder and blow out with dry air or nitrogen.
- 8) Inspect cylinder as per AS1851 and AS2030.1 requirements. Check cylinder date stamp and pressure test cylinder if 5 years and older. Ensure cylinder interior is clean and free of corrosion and foreign objects. Check and clean the cylinder neck thread.
- 9) Clean cylinder valve entry thread, filler plug entry thread, and sealing face.
- 10) Refit valve and diptube assembly to cylinder using Loctite 577 on valve/diptube thread.
- 11) Refit extinguisher into trolley.
- 12) Fill the cylinder with correct powder as specified
- 13) Ensure filler plug o'ring is in good condition. Replace if required. Lubricate o-ring with Molykote M55 or 111 and assemble o-ring and filler plug to cylinder and spanner tighten.
- 14) Recharge the extinguisher through filler plug Schrader valve with dry nitrogen until the pressure manifold gauge indicates the correct pressure. Check that the extinguisher pressure indicator is in the operable range.
- 15) Refit safety pin and fit new anti-tamper seal. Take care not to open valve and accidentally discharge the contents.
- 16) Leak test all joints and seals disturbed during the service with a leak detector or with the use of a leak detection solution such as "Snoop".
- 17) Inspect labels for condition and replace if necessary. Record new gross weight on label.
- 18) Check hose and discharge gun for damage and blockage. Blow out with dry air or nitrogen and thoroughly clean. Check cylinder date stamp and pressure test the hose assembly to 2MPa every five years in line with the cylinder pressure test requirements
- 19) Inspect trolley for cleanliness, damage and corrosion. Check that wheels are in good condition, inflated to correct pressure and rotate freely. Rectify if necessary.
- 20) Refit hose assembly to valve. Coil hose neatly on trolley and secure with Velcro tie. Ensure there are no kinks in the hose
- 21) Ensure all maintenance records and documentation is completed