



# ColdStream<sup>®</sup>Select

**ColdStream Select is an end-to-end global risk mitigation cloud solution, protecting validated data for in-transit product release decisions critical to product integrity and patient safety.**

- ✓ Validated Data Management for Temperature-Sensitive Supply Chains
- ✓ Workflow Automation
- ✓ Global, Secure, Accessible Cloud Application
- ✓ Tailored User Experience by Job Role
- ✓ Integrate with Many Systems
- ✓ Data Analytics, Dashboards and Best Practice Advice

## Features and Benefits

- Streamline product release decisions with full traceability supporting life sciences' temperature-sensitive shipments
- Peace of mind for quality, logistics and compliance professionals, supporting global supply chain visibility and operations
- Reduce reliance on paper records, and be ready to meet auditor expectations
- Built to comply with FDA 21CFR Part 11, EC Annex 11 and cGxP for proper electronic record keeping, and provides system-of-record
- Global, complex supply chains with many partners require a private-cloud solution with hardened security and redundancy
- Adoption made easy with no desktop software installation required\*; localization supporting 9 languages and local time zones
- Increasing productivity with configurable role-based views, notifications, permissions and selective access for third-party partners
- Add automation to your workflows reducing costs for low risk, repetitive decisions handled through software business rules
- Simplify datalogger inventory and pack-outs, reducing errors by incorporating new, software-based alarming, lessening the need for multiple configured dataloggers
- Data analytics and dashboards combined with Sensitech's deep professional service expertise provide the business tools for process improvements, cost reduction and optimizing supply chain performance

Inquire about our validated stationary monitoring sister solution: **ColdStream<sup>®</sup> Site.**



\*Tray App installation required only for local monitor re-configuration

## Validated Data Management for Temperature-Sensitive Supply Chains

- Utilize ColdStream Select as the “system-of-record” with full traceability for product release decisions and excursion management
- View, store, retrieve and analyze detailed time-and-temperature shipment (logistic) data
- Designed to comply with FDA 21 CFR Part 11 and EC Annex 11 and EU Good Manufacturing and Distribution Practices (cGxP)
- Supports data integrity requirements by managing temperature-sensitive shipment data through validated electronic recordkeeping, traceability with automatic date stamped audit trails, security and disaster recovery
- Document observations with annotations on time-and-temperature graphs

## Workflow Automation

- Add automation to your workflows to reduce human error and save on product disposition costs
- Focus Quality decisions on the “major” excursions; repetitive, minor alarm, quality decisions can be handled through software business rules
- Add software-based alarms for additional thermal-budget management capabilities by simplifying datalogger inventories and pack-out processes
- Take advantage of notifications and escalations to inform users of events and when action is needed

## Global Secure Accessible Cloud Application and Support

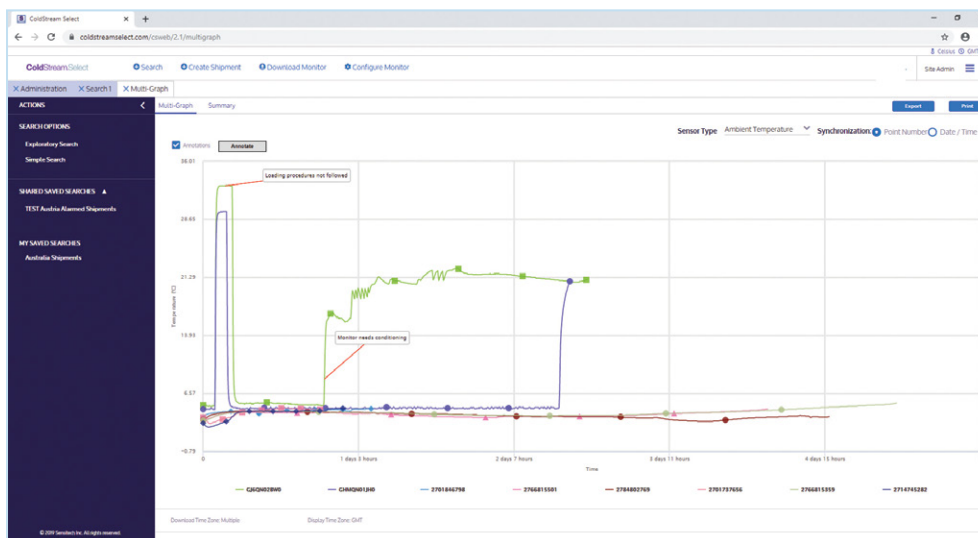
- Provides 24X7 web-based system availability compatible with Sensitech's TempTale<sup>®</sup> Ultra dataloggers and TempTale GEO LTE, for comprehensive data collection and management
- Flexible, configurable security settings to match your IT policies
- Multi-lingual support, including online Help, and 24X7 global hardware and software support services

## Tailored User Experience by Job Role

- Configurable to support multiple business units and many workflows by job function, location, etc. to make work more productive and streamlined
- Saved search templates can be configured by user role to support best practices
- Streamlined administration

## Integrate with Many Systems

- Gain efficiencies by integrating with ERP systems, Warehouse and Transportation systems, clinical trial management systems, third-party logistics software, etc.



## Analytics, Dashboards and Professional Services Best Practices

- Show progress to your executive team, meet your process improvement and operational goals with ColdStream's business reporting tools which include dynamic KPI dashboards, on-demand reports, Program Compliance Analysis, and Cold Chain Performance Analysis
- An assigned Program Manager provides best practice recommendations and analysis with actionable outcomes that support continuous process improvement. Inquire about different service levels

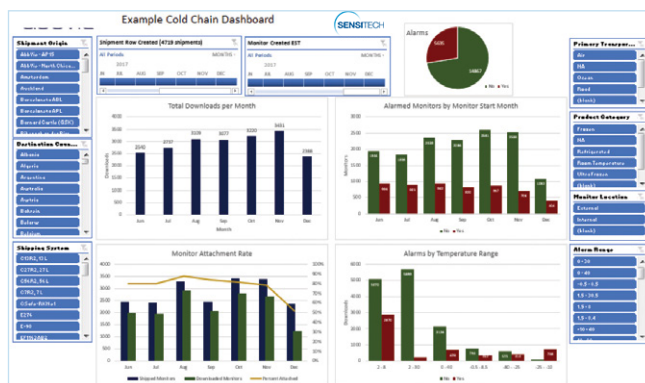


## Dashboards

Dashboards are an efficient way to track Key Performance Indicators (KPIs). Analytics based on aggregated data collected across many shipments, lanes, seasons, modes, carriers and pack-outs allows for a risk-based approach to improvement initiatives and optimization.

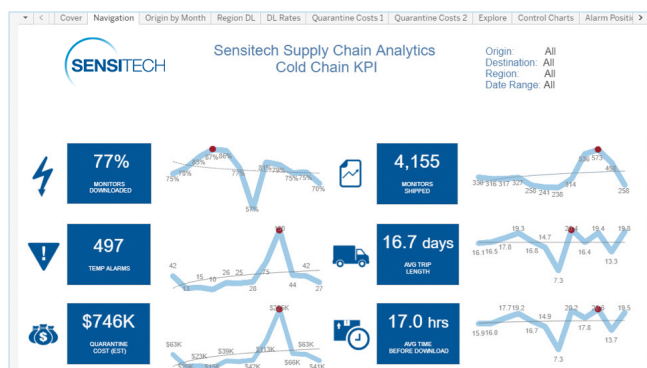
### Program Compliance Analysis

- Confirm cold chain program is running as designed
- Provide visibility into data download compliance by site and other attributes
- Monitor whether shippers and receivers are complying with standard operating procedures
- Provide benchmarks and advice for process improvements and training



### Cold Chain Performance Analysis

- Alarm analysis by site, lane or mode, analyzing root causes
- Site comparisons and recommendations
- Packaging and process analysis, recommend cost reductions
- Manage to corporate KPIs, optimization
- Analyze third party performance and service levels



## Why Sensitech

**ColdStream Select is supported by Sensitech's world-class organization:**



### Validated 3-Point NIST<sup>®</sup> traceable calibrated dataloggers

Each TempTale Ultra datalogger is calibrated to a three-point NIST traceable standard. Benefit from Sensitech's unrivaled global order fulfillment capabilities and manufacturing disaster recovery mitigation.



### Validated stationary monitoring solution: ColdStream<sup>®</sup> Site

ColdStream Site is a wireless, stationary temperature and humidity monitoring solution that drives visibility, compliance and reduces waste. It helps companies comply with Good Distribution Practices designed with 21 CFR Part 11 record keeping for the safe storage of pharmaceuticals.



### 30+ years of experience

Benefit from Sensitech's 30+ years of experience placing monitors and implementing protocols; our field support has successfully passed regulatory scrutiny with FDA, EU, Health Products Regulatory Authority (HPRA), Health Canada, and Medicines and Healthcare Products Regulatory Agency (MHRA) and many more.



### Quality management system

Sensitech's quality management system and processes have **passed over 200 Life Sciences customer audits** in the last 15 years.



### Real-time visibility solutions

Real-time visibility solutions to support mission-critical quality, logistics and security tracking; with hands-free, automated validated data upload to ColdStream Select.



### Professional services team

Sensitech's longstanding Professional Services team provides deep expertise and analysis in cold chain, logistics and security.



### Global hardware and software services team

Sensitech's Global Hardware and Software Services team provide follow the sun support services strategically positioned around the world for optimal coverage to support customers.



### Global footprint

Nine order fulfillment centers around the world and seven manufacturing sites with industry-leading disaster recovery capabilities.

Sensitech Inc. is focused on delivering supply chain visibility solutions that track, monitor and protect products for global leaders in the food, life sciences, consumer goods, and industrial markets. Our solutions are focused in three key areas: quality and compliance, supply chain security, and logistics performance management. Quality and compliance solutions address temperature-sensitive, complex supply chains focused on delivering the highest quality possible, while our supply chain security solutions help to mitigate risks associated with theft, diversion and chain of custody. Sensitech's logistics performance solutions deliver origin-to-destination, real-time transparency to any in-transit journey. Sensitech Inc. is an ISO 9001:2015 company, headquartered in Beverly, Mass., with over 35 sales, service and distribution locations around the world. Sensitech is a Carrier company, a leading provider of heating, air conditioning and refrigeration systems, building controls and automation, and fire and security systems leading to safer, smarter, sustainable and high-performance buildings. Unless otherwise indicated, all trademarks and service marks are the property of Sensitech Inc. Visit [www.sensitech.com](http://www.sensitech.com) for additional information. ©2020 Carrier. All Rights Reserved.

Sensitech Inc. • Global Headquarters • 800 Cummings Center • Suite 258X • Beverly, MA 01915-6197  
1-800-843-8367 • +1-978-927-7033 • Fax: +1-978-921-2112 • [sensitech.clientservices@carrier.com](mailto:sensitech.clientservices@carrier.com)