



Software

Number: **DataLine 2.2 - 2015**

Subject: Installation Instructions from 2.0 or lower

Released: 04/16/2015

1. Verify current version

1. Start DataLine
2. Click ? to open the about dialog box.
3. The version number will be displayed in the About Dialog Box. If the version number shown is 2.1 these instructions are not required please return to the original DataLINE 2.2 page and follow the instructions from Step 2
4. If the version number is 1.0 through 2.0 follow the instructions below to upgrade DataLINE.
5. Shut Down DataLine.

2. Installation

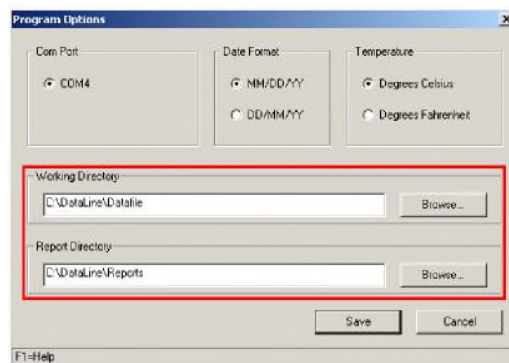
1. Preparing to install all operating systems

1. To install the upgrade you must have Administrator privileges. If you don't have these system privileges or the installation will not run please contact your local system administrator who can assist you with system privileges
2. Ensure ALL programs are shut down before starting the upgrade process. This includes programs that may be running in the background in the Windows toolbar, such as software firewalls eg Zone Alarm, Anti virus programs eg McAfee, Instant messaging programs eg AOL or Yahoo Instant message.
4. To locate where you save Datafiles, Logfiles and Reports. Start DataLine to the Launch pad and select Program options as shown.



Please circulate copies of this document as soon as possible to all of your service and management personnel.

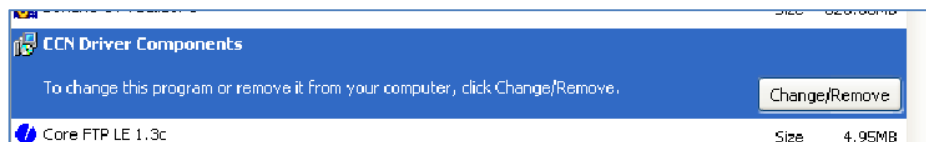
5. Check the location of the working directories for Datafiles and Reports.



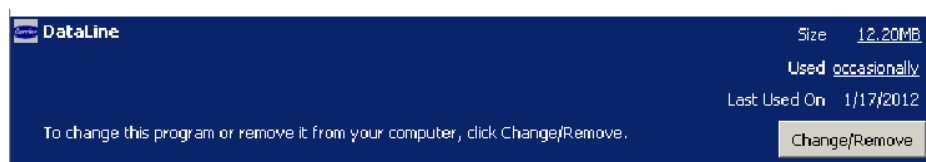
6. From Windows Explorer (XP/Vista) or Documents (Win 7) drag and drop the Datafile, Logfile and Reports directories to a temporary location outside the DataLine directory so they are not deleted during the uninstall procedure below.

2. Uninstall drivers and programs Windows XP / Vista 32bit

1. Prior to starting the DataLine Installation it will be necessary to remove the programs/drivers listed below. Not all versions have these files if you cannot find any of the files in the list then you can proceed to the next file as it is not installed.
2. From START / Settings / Control Panel select 'Add/Remove Programs', All programs are listed alphabetically
 1. Scroll down the list until you reach CCN Driver



2. Click 'Change/Remove'
3. You will be guided through the uninstall
4. When finished, select 'No' when asked to restart the computer. Restart can be done when the last program is uninstalled
2. Scroll down until you reach DataLine.



1. Ensure you have moved the directories that contain your old download and report files if you wish to retain them as they will be deleted during the uninstall
2. Click 'Change/Remove'
3. You will be guided through the uninstall
4. When finished, select 'No' when asked to restart the computer. Restart can be done when the last program is uninstalled

Please circulate copies of this document as soon as possible to all of your service and management personnel.

3. Scroll down and verify that you have the Keyspan USB Serial Adapter installed.



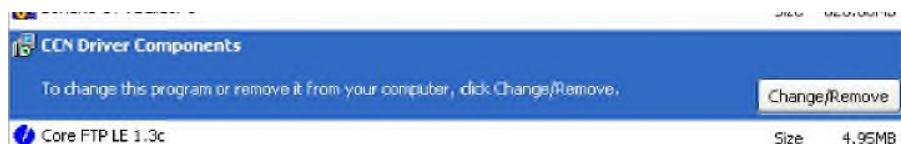
1. If it is installed leave it there.
2. If not then this will have to be installed prior to installing DataLine
- 3 Note you may also have Prolific USB Serial Adapter in the list. This should also be left installed as you have a device that uses this adapter.
4. Scroll down to USB-RS232 Driver, this is not the same as the Keyspan or Prolific, USB Serial Adapter.



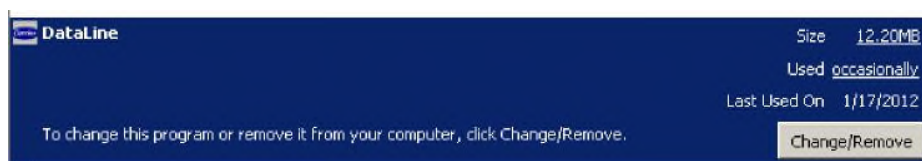
1. Click 'Remove'
2. You will be guided through the uninstall
3. When finished, select 'Yes' when asked to restart the computer.
4. Allow the computer to restart.

3. Uninstall drivers and programs Windows 7

1. Prior to starting the DataLine Installation it will be necessary to remove the programs/drivers listed below. Not all versions have these files if you cannot find any of the files in the list then you can proceed to the next file as it is not installed.
2. From START / Control Panel select 'Program Features', All programs are listed alphabetically
 1. Scroll down the list until you reach CCN Driver



2. Click 'Change/Remove'
3. You will be guided through the uninstall
4. When finished, select 'No' when asked to restart the computer. Restart can be done when the last program is uninstalled
3. Scroll down until you reach DataLine.

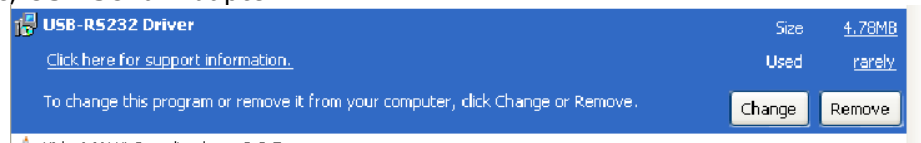


Please circulate copies of this document as soon as possible to all of your service and management personnel.

1. Ensure you have moved the directories that contain your old download and report files if you wish to retain them as they will be deleted during the uninstall
2. Click 'Change/Remove'
3. You will be guided through the uninstall
4. When finished, select 'No' when asked to restart the computer. Restart can be done when the last program is uninstalled.
4. Scroll down and verify that you have the Keyspan USB Serial Adapter installed.



1. If it is installed leave it there
2. If not then this will have to be installed prior to installing DataLine if your computer does not have a built in RS232 COMM port and you will be using the keyspan adaptor.
3. Note you may also have a Prolific USB-RS232 driver in the list. This should be left installed as you have a device that uses this driver.
5. Scroll down to USB-RS232 driver, this is not the same as the Keyspan or Prolific, USB Serial Adapter



1. Click 'Change/Remove'
2. You will be guided through the uninstall
3. When finished, select 'Yes' when asked to restart the computer.
4. Allow the computer to restart.

4. Installing Keyspan USB Serial Adaptor

1. If the Keyspan USB Serial Adapter was not found in the program list install it from the CD supplied with your Keyspan adapter if you do not have an integral RS232 COMM port and wish to download units with DataLINE.
2. Restart the computer after installing the driver. Note use the appropriate driver for your operating system either Windows XP or Windows 7.

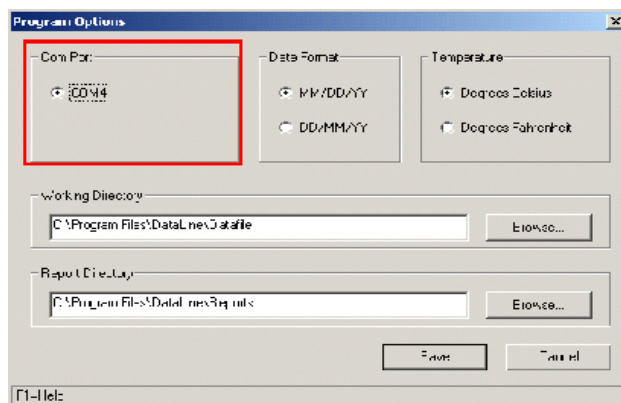
4. Install DataLine 2.2

1. If DataLine 2.1 was supplied as a zipped file, unzip to a temporary directory. The setup.exe file cannot be run directly from inside the zip file.
2. Double click to select and run the Setup.exe file.
3. Follow the instructions on the screen to select the install location.
4. Allow the install to complete.
5. On completion restart the computer.

Please circulate copies of this document as soon as possible to all of your service and management personnel.

6. To test the installation

1. Insert the Keyspan USB Serial Adapter into one of your USB connections
2. Start DataLine Launch pad and select Program options
3. There should be a COM port shown in the COM section of the Options Dialog showing that DataLine has detected the Keyspan driver. If the adaptor is not connected then no COM port will be shown. It is important at this step that you have the keyspan adaptor connected and a COM port is shown.
4. Once you have the COM port shown use 'SAVE' to accept the COM port assignment. Until you SAVE these settings once you will not be able to download units.



Note: If you have **multiple COM Ports** listed, DataLINE automatically selects the COM Port that has the Keyspan adaptor attached to it. To ensure that this port is selected correctly prior to use, the procedure below should be used. This only has to be done the first time DataLINE is used after the install.

1. Note the COM Port that is selected by DataLINE.
 2. Select any other port in the COM Port list.
 3. Use 'Save' to set the COM Port assignment.
 4. Reselect the original COM port noted in 1. above
 5. Use 'Save' to set the COM Port assignment.
 6. DataLINE now has the correct COM Port assigned.
5. Reset the Working directories to how you prefer to use DataLine
 6. Click SAVE and then CANCEL to exit the program options screen
 7. DataLine is now ready for use.
 8. If you moved older download files and reports to a temporary location they can be copied back to the new download and report directories creating during the install.